



GUM SPRINGS CEMETERY SEARCY, ARKANSAS



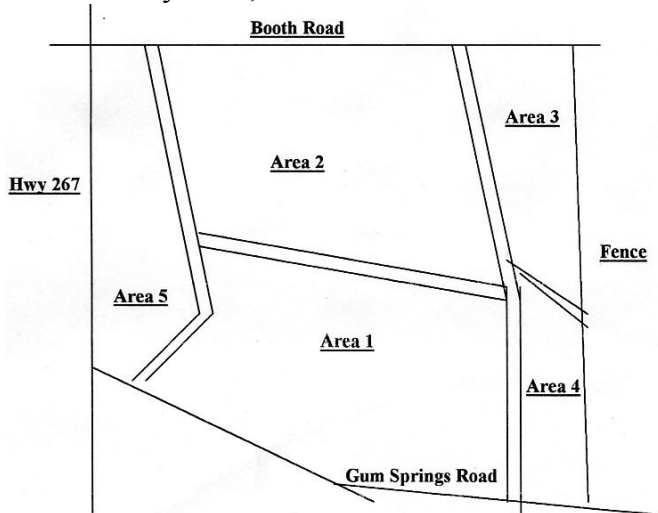
List updated May 1, 2008
Legal description: NE, NE, NE, Sect.21, T7N, R7W
Earliest listed grave: May 1, 1852 – Harriet Spencer Neal
Last listed grave: 2007
Arkansas Archeological Survey site #3WH0635
G.P.S. location: 613686 – 3898300
Number of marked graves: Approximately 1,800
Unmarked graves: Approximately 800
Contacts: Ronnie or Cheryl Selvidge (501 268-9517)

Gum Springs Cemetery is located at the intersection of Booth Road and Hwy 267 south of Searcy just outside the city limits. It is one of the county's oldest cemeteries that are still in use. This is the final resting place for Medal of Honor recipient Joshua Hartzog, Vietnam War hero Capt. Wilbur Dale Latimer, other distinguished veterans of many wars, and some of the area's earliest pioneers.

A complete survey of the cemetery was done by the Gum Springs Extension Homemakers Club in 1968 and published by the White County Historical Society in its *White County Heritage*. This 31-year-old original list was prepared for the Internet by Historical Society board member Kara Spence in 1999. An update was made April 10, 2000, by another Historical Society volunteer, former Searcy postmaster

Tommy H. Treadway. He was unable to find 229 graves that were listed in 1968. Treadway's report stated the cemetery "is well kept, mowed and has several large trees which provide shade and serenity." He also noted, "Some of the stones have begun to deteriorate by becoming loose on their bases or sitting down beside their bases. These would take very little effort to re-putty and replace on their base, before they become damaged. Some stones that are very old have gotten broken, most of the time along where the born or died dates are; due to the etching they are probably weaker there."

When Leroy Blair of the Historical Society visited Gum Springs Cemetery several times during January and February 2001, he added 187 names to the list. He added 44 more in December 2002. "This is a very



difficult cemetery to get an accurate listing," Blair reported. "The graves are scattered with unmarked graves between marked graves. I estimate there are at least 800 unmarked graves."

In early 2007, Blair prepared this map of the cemetery and added Area numbers to the list of burials, to make it easier to locate specific graves.

Medal of Honor winner Joshua Hartzog died in White County but was born in Baulding County, Ohio. He served as a Private, Company E, 1st U.S. Artillery. He earned the Medal of Honor at Wounded Knee Creek, South Dakota, on December 29, 1890.

His citation reads: "Went to the rescue of the commanding officer who had fallen severely wounded, picked him up, and carried him out of range of the hostile guns."

For additional information on this cemetery, contact Gum Springs Cemetery, 2240 Gum Springs Road, Searcy, AR 72143.

The following abbreviations are used for this list

DS = double tombstone.

TS = triple tombstone.

FM = funeral home marker.

If you have corrections or additions to this list, or additional information on Gum Springs Cemetery, contact the White County Historical Society at P.O. Box 537, Searcy, AR 72145 or Leroy Blair, 557 Baker Road, Searcy, AR 72143.

Aaron, J.R. – May 17, 1846 – January 21, 1894 (Area 1)

Aberle, Deborah M. – 1923 – 1978 (Area 3)

Adams, Henrietta E. – March 10, 1929 – only date – DS with Ruben N. Adams (Area 3)

Adams, Lydia E. – December 17, 1902 – September 30, 1969 (Area 3)

Adams, Mary Glynn – January 16, 1958 – January 16, 1958 (Area 3)

Adams, Mary Grace Huff – January 22, 1932 – November 13, 2001 – wife of Glynn Adams (Area 3)

Adams, Oless Marlon – August 9, 1923 – October 26, 1965 (Area 3)

Adams, Ramon K. – October 7, 1901 – July 12, 1991 (Area 3)
Adams, Ruben N. “Shorty” – November 12, 1927 – July 29, 1992 – DS with Henrietta E. Adams (Area 3)
Alexander, A. Robert – April 8, 1909 – August 8, 1976 – DS with Justine Gaines Alexander (Area 3)
Alexander, Justine Gaines – July 23, 1910 – November 28, 1999 – DS with A. Robert Alexander (Area 3)
Allison, Scott Milton – born and died July 1, 1964 (FM) (Area 3)
Altom, Arlie Euzell – October 31, 1923 – December 23 1989 – DS with Erma Hynds Altom (Area 5)
Altom, Erma Hynds – June 23, 1928 – only date – DS with Arlie Euzell Altom (Area 5)
Anderson, James Hogan – May 23, 1854 – March 25, 1947 (Area 2)
Anderson, Sarah F. – January 18, 1856 – November 15, 1921 – wife of J.H. Anderson (Area 2)
Angel, Billy – August 21, 1924 – May 18, 1985 – Pfc. U.S. Army Inf WWII – DS with Ruby I. Angel (Area 2)
Angel, Ruby I. – August 30, 1928 – August 28, 1971 – DS with Billy Angel (Area 2)
Arnold, Aileen Bogan – September 6, 1908 – April 7, 1993 (Area 2)
Arnold, Bertsie E. – May 14, 1884 – March 7, 1958 – DS with Perry B. Arnold (Area 2)
Arnold, Hugh T. – died 1895 – only date – TS with Mary Alice and Willie B. Arnold (Area 1)
Arnold, Luther W. – October 1, 1865 – April 19, 1931 (Area 2)
Arnold, Mary Alice – November 13, 1867 – July 12, 1908 – TS with Hugh T. and Willie B. Arnold (Area 1)
Arnold, Perry B. – March 20, 1893 – October 5, 1981 – U.S. Army WWI – DS with Betsie E. Arnold (Area 2)
Arnold, Ruby J. – February 11, 1908 – August 3, 1985 (Area 2)
Arnold, Scott W. – July 6, 1891 – April 12, 1978 – Pfc. U.S Army WWII (Area 1)
Arnold, Shelby Green – 1902 –1969 (Area 2)
Arnold, William B. – August 24, 1906 – January 8, 1967 (grave not found in November 2006)
Arnold, Willie B. – died 1896 – Only date – TS with Hugh T. & Mary Alice Arnold (Area 1)

Atkinson, Kynlei Elizabeth – January 4, 2005 – January 21, 2005 (Area 3)
Atwood, Meaders Henry – July 23, 1899 – October 14, 1918 – Son of M A & Ella Atwood (Area 2)
Aunspaugh, Henry A – April 12, 1873 – January 30, 1902 – Husband of Sallie Sherrod Aunspaugh (Area 1)
Aunspaugh, Jobe A – April 6, 1835 – November 18, 1903 – son of Benjamin F. and Rhuhama Hartley Aunspaugh (Area 1)
Aunspaugh, John Charles – 1869 – 1953 – husband of Rebecca Sappington Aunspaugh (Area 1)
Aunspaugh, Mary A. – May 18, 1842 – March 17, 1905 – DS with Jobe A. Aunspaugh (Area 1)
Aunspaugh, Mary Elizabeth – January 11, 1877 – January 5, 1965 (Area 1)
Aunspaugh, Mary J. – March 16, 1844 – March 17, 1903 (Area 1)
Auxier, Willie Williams – November 13, 1931 – November 14, 1989 (Area 5)
B., A.H. – 1877 – 1888 (grave not found in November 2006)
Bailey, Della Lambert – 1867 – 1943 (Area 1)
Bailey, Francis Inez – born and died January 12, 1931 (Area 2)
Bailey, George Washington – July 20, 1837 – February 1, 1914 – Civil War veteran CSA (Area 2)

Bailey, James A. – April 2, 1816 – May 10, 1909) (grave not found in November 2006)

Bailey, John O. Jr. – March 25, 1946 – only date – DS with Lynda L. Bailey (Area 2)
Bailey, Lynda L. (Corbitt) – March 9, 1947 – only date – DS with John O. Bailey (Area 2)
Bailey, Mary – December 22, 1859 – January 4, 1956 (Area 2)
Bailey, Sara A. – August 10, 1856 – July 25, 1937 – DS with Wade H. Bailey (Area 2)
Bailey, Wade H. – November 18, 1859 – August 25, 1936 – DS with Sara A. Bailey (Area 2)
Bailey, Willie E. – May 28, 1860 – April 7, 1934 (grave not found in November 2006)
Baker, Archie R. – June 4, 1906 – April 28, 2002 – DS with Ruth W. Baker – U.S. Army WWII (Area 2)
Baker, Doris E. – January 22, 1904 – July 13, 1990 – (FM) (grave not found in November 2006)
Baker, Ernest O. – August 6, 1900 – June 26, 1992 – (FH) (grave not found in November 2006)
Baker, Eva P. – November 23, 1896 – April 10, 1981 – DS with Orion L. Baker (Area 2)
Baker, Maxine – 1927 – 1937 (Area 2)
Baker, Orion L. – October 28, 1895 – July 4, 1961 – DS with Eva P. Baker (Area 2)
Baker, Ruth – November 4, 1915 – January 14, 2006 – DS with Archie R. Baker (Area 2)
Baker, Virgil A. – April 2, 1924 – January 10, 1976 – Pfc. U.S. Army WWII (Area 2)
Baker, William B. – February 16 1927 – May 16 1927 (Area 2)
Ballard, Joe R. – September 9, 1885 – March 11, 1961 (Area 2)
Ballard, Nellie G. – October 8, 1925 – only date – DS with Robert B. Ballard (Area 2)
Ballard, Robert B. “Buck” – November 15, 1926 – September 6, 1995 – GM3 U.S. Navy Korea – DS with Nellie Ballard (Row 2)
Barger, Albert D. – July 14, 1924 – October 16, 1977 – TSgt. USAF WWII, Korea, & Vietnam – DS with Helen Barger (Area 3)
Barger, Helen – June 23, 1926 – only date – DS with Albert D. Barger (Area 3)
Barnes, Henry Calvin – October 1, 1905 – May 18, 1989 (grave not found in November 2006)
Barnes, Jay B. – May 21, 1892 – 1988 – DS with Mary Ethel Barnes (no date of death on stone)
Barnes, Mary Ethel – December 26, 1895 – March 18, 1983 – DS with Jay B. Barnes
Barnes, Veronia – November 17, 1908 – October 4, 1996 (grave not found in November 2006)
Barrentine, Louis – April 10, 1885 – October 5, 1916 (Grave not found in November 2006)
Bateman, Audra C. – June 21 1888 – June 12, 1931 – DS with Thomas H. Bateman (Area 2)
Bateman, Bonnie Lou – March 8, 1945 – June 22, 1949 (Area 2)
Bateman, Burnice A. – June 25, 1924 – only date – DS with C. Fay Bateman (Area 2)
Bateman, C. Fay – February 20, 1899 – July 26, 1968 – DS with Burnice A. Bateman (Area 2)
Bateman, Clyde O. – August 31, 1899 – December 12, 1970 - DS with Jerry G. Bateman (Area 2)
Bateman, Jerry G. – September 20, 1891 – September 26, 1968 – Pvt. U.S. Army WWI (DS with Clyde O. Bateman (Area 2)
Bateman, Minelyne – October 27, 1915 – July 18 1918 – daughter of Thomas H and Audra C. Bateman (Area 2)
Bateman, Thomas H. – October 5, 1861 – February 18, 1944 – DS with Audra C. Bateman (Area 2)
Bates, Betty Carolyn – March 11, 1950 – January 26, 2006 – DS with Rev. A. Dale Bates (Area 4)
Bates, Rev. A. Dale – February 23, 1947 – only date – DA with Betty Carolyn Bates (Area 4)
Batty, Pamela Renae – January 31, 1964 – November 28, 2002 – DS with Judie K. Dubose (Mother) (Area 2)
Baucom, A.H. – 1867 – 1890 – TS with B. and J.P. Baucom (Area 1)
Baucom, B. – 1829 – 1893 – TS with J.P. and A.H. Baucom (Area 1)
Baucom, J.P. – 1863 – 1893 – TS with A.H. and B. Baucom (Area 1)

Beard, Charles H. – February 13, 1872 – November 2, 1961 – DS with Tommie Beard (Area 3)
Beard, Tommie F. – June 25, 1875 – September 17, 1966 – DS with Charles H. Beard (Area 3)
Beck, Howard – March 28, 1909 – January 29, 1987 – DS with Nola Beck (Area 3)
Beck, Jerrell L. – September 19, 1932 – June 28, 1996 – U.S. Air Force Veteran – DS with M. Carnell Beck (Area 3)
Beck, M. Carnell – March 28, 1927 – only date – DS with Jerrell L. Beck (Area 3)
Beck, Nola M. – December 26, 1913 – 2000 – DS with Howard Beck (death date on FM) (Area 3)
Bell, Effie B. – December 19, 1907 – November 30, 1974 (Area 4)
Bell, Henry – June 20, 1875 – November 19, 1922 – DS with Jim Bell (Area 1)
Bell, Jim – October 2, 1887 – September 3, 1946 – DS with Henry Bell (Area 1)
Bell, Ophelia – 1913 – 1998 – DS with William T. Bell (Area 1)
Bell, Robert E. – July 20, 1952 – March 24, 2002 (Area 4)
Bell, William T. – 1914 – 1976 – DS with Ophelia Bell (Area 1)
Bennett, Martha Rollins – January 14, 1915 – June 16, 2001 (Area 3)
Benson, Annette Oliver – December 26 1915 – August 21, 1995 – DS with William Ouzts Benson (Area 2)
Benson, William Ouzts – October 1, 1891 – August 12, 1983 – DS with Annette Oliver Benson (Area 2)
Berry, Arleen Vincent – February 1, 1924 – January 4, 1975 – DS with Clayton C. Berry (Area 1)
Berry, Charlie – December 29, 1902 – November 1, 1968 – DS with Dicie E. Berry (Area 2)
Berry, Clayton C. – December 2, 1919 – April 13, 1986 – DS with Arleen Vincent Berry (Area 1)
Berry, Dicie E. – June 27, 1910 – only date – DS with Charles Berry (Area 2)
Berry, Mildred Bridges – September 5, 1918 – May 23, 1991 (Area 3)
Beverly, Harry – died December 2, 1922 – Only date (Area 1)
Bird, Eva – November 19, 1903 – December 5, 1908 (Area 2)
Bird, Gladys – August 19, 1905 – December 1, 1908 – daughter of William T. and Ida Bird (Area 2)
Bird, Ida C. – 1875 – 1963 – DS with William T. Bird (Area 2)
Bird, James R. – September 7, 1849 – June 17 1921 (Area 2)
Bird, Lois – July 27, 1902 – November 20, 1908 (Area 2)
Bird, Thelma L. – no dates (Area 2)
Bird, William T. – 1873 – 1940 – DS with Ida C. Bird (Area 2)
Bittle, Authur S. – May 16, 1907 – August 27, 1967 – DS with Helen Inez Bittle (Area 2)
Bittle, Clara A. – May 13, 1890 – February 27, 1947 – DS with John I. Bittle (Area 2)
Bittle, Helen Inez – September 8, 1918 – May 5, 1983 – DS with Arthur S. Bittle (Area 2)
Bittle, John I. – December 23, 1890 – July 24, 1947 – DS with Clara A. Bittle (Area 2)
Blake, Bernice – October 7, 1915 – May 17, 1996 – DS with John W. Blake Jr. (Area 2)
Blake, Donald “Buddy” February 8, 1942 – November 22, 1989 (Area 2)
Blake, John W. Jr. – July 24 1911 – May 11, 1980 – DS with Bernice Blake (Area 2)
Blake, John W. – October 20, 1875 – July 4, 1963 (grave not found in November 2006)
Blake, Nellie Adams – June 3, 1895 – January 5, 1986 (Area 2)
Blevins, A.H. – 1877 – 1898 (grave not found in November 2006)
Blevins, E.B. – no dates – age 10 months – daughter of H. & J.B. – carved on a rock (Area 1)
Blevins, Harrison – May 12, 1826 – December 15, 1881 (Area 1)
Blevins, Henneger – July 23, 1839 – August 3, 1905 (Area 1)
Blevins, Mrs. H. J. – August 24, 1844 – July 7, 1914 (Area 1)

Blevins, Nancy – May 3, 1832 – October 29, 1910 (Area 1)
Bogan, Jesse M. – January 30, 1904 – July 4, 1979 (Area 5)
Bolding, Donna Kay – August 29, 1958 – only date (Area 5)
Bolding, Electa – May 15, 1894 – October 10, 1978 – DS with Joe Bolding Sr (Area 3)
Bolding, Joe Sr. – June 21, 1889 – February 25, 1973 (Area 3)
Boone, Daniel M. – January 18, 1937 – only date – DS with Dorothy M. Boone (Area 4)
Boone, Roy R. – February 4, 1976 – February 5, 1976 (Area 2)
Booth, Ida – August 1, 1898 – January 11, 1993 (Area 3)
Booth, Otis – October 31, 1891 – November 30, 1969 (Area 3)
Booth, W. S. – December 1, 1878 – April 23, 1970 (Area 3)
Bostic, Flossie A. – August 12, 1923 – August 2, 2006 – DS with O.P. Bostic (Area 2)
Bostic, O.P. – November 9, 1919 – November 20, 2002 – DS with Flossie Bostic (Area 2)
Bouse, Stella L. – June 3, 1889 – April 3, 1948 (Area 2)
Bowman, Boyd – 1900 – 1901 (grave not found in November 2006)
Bowman, Emerson – 1857 – 1902 (Area 1)
Bowman, Waman – no dates (Area 1)
Boyd, James Q. – died March 17, 2007 – age 76 years
Brackenridge, Ellena Ivon – October 2, 1916 – September 24, 1993 – DS with Ocie Otto
Brackenridge (Area 2)
Brackenridge, Fayrene – May 20, 1946 – only date – (twin to Norma Jean) – DS with Norma Jean
Brackenridge (Area 2)
Brackenridge, Norma Jean – May 20, 1946 – only date – (twin to Fayrene) – DS with Fayrene
Brackenridge (Area 2)
Brackenridge, Ocie Otto – May 1, 1912 – December 7, 1978 – DS with Ellena Ivon Brackenridge
(Area 2)
Bradley, A. A. – November 19, 1958 – June 6, 1931 (Area 1)
Bradley, Flora E. – May 31 1916 – December 31, 1953 (Area 2)
Bradley, John H. – September 28, 1891 – November 27, 1965 – DS with Rosie Bradley (Area 2)
Bradley, Robert C. – June 14, 1944 – January 9, 1945 (Area 2)
Bradley, Rosie S. – March 17, 1905 – June 19, 1961 (Area 2)
Bradley, Shirley Laverne – January 16, 1945 – June 6, 1965 (Area 2)
Bragg, Winnie Oliver – July 25, 1905 – August 19, 1979 (Area 2)
Bramlett, Nancy J. – 1929 – 1934 (Area 2)
Bramlett, Ray B. – 1906 – 1936 (Area 2)
Branch, ? – March 24, ? – only date (grave not found in November 2006)
Branch, Mary E. Jobe – June 25, 1858 – June 10, 1922 – wife of B.H. Branch (Area 2)
Brandon, Ina W. – June 3, 1918 – November 20, 1988 – DS with James H. Brandon (Area 3)
Brandon, James H. – March 16, 1916 – February 14, 1986 – DS with Ina Brandon (Area 3)
Brewer, Mattie P. – December 8, 1904 – November 18, 2000 – DS with Oran L. Brewer (Area 2)
Brewer, Oran L. – January 4, 1907 – March 23, 1987 – DS with Mattie P. Brewer (Area 2)
Britt, Ben – July 17, 1894 – August 26, 1960 – DS with Mary Britt (Area 2)
Britt, Blanche E. – July 11, 1886 – June 27, 1967 – DS with James W. Britt (Area 2)
Britt, Hiram M. – died June 4, 1957 – only date – Cook U.S. Army (Area 2)
Britt, Infant – August 21, 1934 – only date – daughter of T.B. and Mary Britt (Area 2)
Britt, James B. – 1861 – 1944 – DS with Lena A. Britt (Area 2)

Britt, James W. – May 8, 1888 – October 15, 1956 – Pvt. U.S. Army WWI – DS with Blanche E. Britt (Area 2)
Britt, Lena A. – 1867 – 1950 – DS with James B. Britt (Area 2)
Britt, Mary – December 17, 1903 – July 28, 1978 – DS with Ben Britt (Area 2)
Britt, Thomas Ben – July 17, 1894 – April 26, 1960 – Pvt. Co H. 38 Inf. WWI (Area 2)
Broach, M. – May 1872 – April 1937 (Area 2)
Broach, Paralee Rissie – February 17, 1872 – December 4, 1955 (Area 2)
Broach, Vivian D. – dates are unreadable (grave not found in November 2006)
Broach, Wesley C. – June 1, 1896 – April 9, 1915 (Area 2)
Broche, York S. – 1858 – June 4, 1914 (grave not found in November 2006)
Brouse, Lottie Ellen – April 15, 1894 – February 14, 1985 (grave not found in November 2006)
Brouse Stella L. – June 3, 1889 – April 3, 1948 (grave not found in November 2006)
Brouse, Lottie Mae – December 28, 1916 – October 27, 1971 (grave not found in November 2006)
Brown, ? – Child # 1 of Rev. James and Margurite Brown – same stone with Rev. James and Margurite Brown (unmarked) (Area 1)
Brown, ? – Child # 2 of Rev. James and Margurite Brown – same stone with Rev. James and Margurite Brown (unmarked) (Area 1)
Brown, ? – Child # 3 of Rev. James and Margurite Brown – same stone with Rev. James and Margurite Brown (unmarked) (Area 1)
Brown, ? – Child # 4 of Rev. James and Margurite Brown – same stone with Rev. James and Margurite Brown (unmarked) (Area 1)
Brown, ? – Child # 5 of Rev. James and Margurite Brown – same stone with Rev. James and Margurite Brown (unmarked) (Area 1)
Brown, A.W. – July 2, 1852 – April 25, 1926 (Area 1)
Brown, Ada Belle – October 20, 1880 – April 17, 1977 (Area 2)
Brown, Alma Jane – March 3, 1911 – January 2, 1977 (Area 1)
Brown, Amy Nicole – February 5, 1969 – August 18, 2006 (Area 2)
Brown, Barbara H. – January 22, 1911 – June 30, 1992 – DS with William L. Brown (Area 2)
Brown, Cynthia C. – January 22, 1877 – August 4, 1953 (grave not found in November 2006)
Brown, Ed – March 26, 1896 – March 27, 1957 (Area 1)
Brown, Elgie Hassell – October 23, 1913 – April 8, 1986 (Area 2)
Brown, J.A. – March 29, 1852 – January 16, 1918 – wife of A.W. Brown (Area 1)
Brown, James Rev. – May 1, 1830 – August 2, 1875 – DS with Margurite Brown (Area 1)
Brown, Jesse J. – November 7, 1887 – September 19, 1973 – DS with Roxie M. Brown (Area 3)
Brown, L.B. – 1897 – 1953 (Area 5)
Brown, Lee Roy – September 2, 1897 – December 9, 1980 (Area 3)
Brown, Lola – August 31, 1883 – December 27, 1912 – daughter of A.W. and J.A. Brown (Area 1)
Brown, Margurite – May 30, 1839 – June 29, 1883 – DS with Rev. James Brown (Area 1)
Brown, Rex – 1917 – 1975 – Cpl. U.S. Army WWII (Area 2)
Brown, Robert J. – November 16, 1890 – December 2, 1964 (grave not found in November 2006)
Brown, Roxie M. – October 21, 1890 – October 19, 1973 (Area 3)
Brown, Shirley C. – June 14, 1915 – December 12, 1987 – DS with Virginia Brown (Area 3)
Brown, Talmadge – May 28, 1919 – April 26, 1945 – Tec5 U.S. Army WWII (Area 2)
Brown, Tammy Rena – July 22, 1967 – January 3, 2004 (Area 2)
Brown, Virginia L. – February 7, 1920 – January 6, 1992 (Area 3)

Brown, Warren V. – July 20, 1916 – January 25, 1918 – son of A.V. Brown (Area 1)
Brown, William A. – July 15, 1888 – July 3, 1967 – Pfc. 29th Evac Hospital WWI (Area 5)
Brown, William Henry – May 1, 1869 – October 15, 1935 (Area 2)
Brown, William L. – May 13, 1909 – March 5, 1982 – Pvt. U.S. Army WWII (Area 2)
Buckley, D. – March (?), 1827 – August 4, 1898 (Area 1)
Burkett, Annie M. – September 2, 1922 – only date – DS with Carl D. Burkett (Area 3)
Burkett, Carl D. – July 28, 1919 – August 16, 1996 – Cpl. U.S. Army WWII (Area 3)
Burkett, Coyle N. – October 27, 1898 – February 12, 1991 – DS with John R. Burkett (Area 3)
Burkett, Hulan G. – October 11, 1922 – March 31, 1991 – Tec5 U.S. Army WWII – DS with Julianne S. Burkett (Area 3)
Burkett, John R. – March 6, 1896 – October 27, 1980 – DS with Coyle N. Burkett (Area 3)
Burkett, Julianne S. – October 13, 1923 – only date – DS with Hulan G. Burkett (Area 3)
Burks, Lulu – died July 15, 1962 – only date (from *Daily Citizen Colored News*)
Burrow, Fannie – May 13, 1809 – July 22, 1872 – DS with William Burrow (Area 1)
Burrow, William – December 24, 1807 – May 30, 1872 – DS with Fannie Burrow (Area 1)
Burson, Carolyn Sue – December 31, 1946 – only date (Area 3)
Burson, Norris "Butch" – September 23, 1944 – May 24, 1993 (Area 3)
Bush, James Lyndell – May 19, 1923 – March 17, 1935 – son of Claude and Aletha Bush (Area 2)
Bush, Nancy V. – October 16, 1870 – June 29, 1947 (Area 2)
Bush, William Hardy – 1871 – 1922 (Area 2)
Butts, Brenda J. – April 17, 1941 – only date – DS with Louis W. Butts (Area 4)
Butts, Louis W. – November 11, 1939 – October 17, 1993 – DS with Brenda J. Butts (Area 4)
Caldwell, Baby – no dates (Area 1)
Caldwell, Benny E. – December 6, 1934 – only date – DS with Jackie C. Caldwell (Area 1)
Caldwell, Dorothy E. – February 4, 1879 – September 20, 1956 – DS with Sidney W. Caldwell
Caldwell, Eunice E. – 1903 – 1970 (Area 2)
Caldwell, Jackie C. – July 23, 1935 – October 7, 1978 – DS with Benny E. Caldwell (Area 1)
Caldwell, James E. – July 15, 1903 – March 18, 1973 – DS with Maymie G. Caldwell (Area 1)
Caldwell, Maymie G. – April 19, 1907 – September 22, 1998 – DS with James E. Caldwell (Area 1)
Caldwell, Sidney W. – December 5, 1875 – November 19, 1959 – DS with Dorothy Caldwell (Area 1)
Caldwell, Wayne H. – September 7, 1918 – February 4, 1959 (Area 1)
Caldwell, William Hardy – 1871 – 1922 (grave not found in November 2006)
Campbell, John A. – 1885 – 1969 (Area 3)
Carlile, Jean Spratt – 1924 – 1994 (Area 2)
Carr, Ceathel Elmo – April 13, 1929 – June 28, 2002 – Pvt. U.S. Army Korea (Area 4)
Carr, Ceathel Eugene III – September 25, 1954 – July 26, 2002 – son of Rebecca (Area 4)
Carr, Frank Edwin – April 9, 1942 – March 23, 2002 (Area 3)
Carr, Jimmie – March 1, 1911 – December 28, 1997 – DS with Monroe W. Carr (Area 3)
Carr, Monroe W. – June 29, 1910 – February 28, 1984 – DS with Jimmie Carr (Area 3)
Carr, Nicholas "Nick" – July 6, 1950 – December 15, 1999 – Pvt. U.S. Army Vietnam (Area 4)
Carruth, Gus E. – Jan 22, 1892 – Sep 12, 1968 – Pvt. U.S. Army WWI (grave not found in November 2006)
Carter, Albert Jesse – October 24, 1881 – July 22, 1960 (Area 1)
Carter, Billie Hawkins – April 16, 1911 – October 31, 1984 (Area 1)
Carter, C.A. – March 13, 1841 – January 29, 1888 – wife of R.W. Carter (Area 1)

Carter, Daisy – May 5, 1889 – December 28, 1972 (Area 1)
Carter, Emma R. – April 22, 1854 – July 4, 1897 – wife of A.T. Carter (Area 1)
Carter, George O. – October 5, 1883 – July 3, 1937 (Area 1)
Carter, Georgella Baker – December 21, 1892 – July 14, 1968 (Area 1)
Carter, John T. Sr. – March 4, 1885 – September 18, 1966 (Area 1)
Carter, Maisy H. – May 5, 1889 – May 23, 1976 (Area 1)
Carter, Milton – February 1, 1906 – March 19, 1968 (Area 1)
Carter, Myrtle – July 31, 1908 – July 16, 1909 (Area 1)
Carter, R.W. – April 22, 1838 – November 1, 1885 (Area 1)
Carter, Billie Hawkins – April 16, 1911 – October 31, 1984 (Area 1)
Caruth, Anna – February 8, 1851 – April 18, 1936 (Area 2)
Caruth, Azzie I. – December 24, 1879 – January 9, 1935 (Area 2)
Caruth, Daisy D. – February 26, 1883 – December 4, 1902 (Area 2)
Caruth, Effie L. – 1894 – 1923 (Area 2)
Caruth, Eugene – March 2, 1881 – November 18, 1929 (Area 20)
Caruth, Gus E. – January 22, 1892 – September 12, 1968 – Pvt. U.S. Army WWI (Area 2)
Caruth, Joseph C. – October 31, 1853 – December 25, 1901 (Area 2)
Caruth, Joseph Coleman – April 14, 1917 – April 18, 1953 – Sgt. 716 Med. Sanitary Co WWII (Area 2)
Caruth, Josiephene – July 29, 1886 – February 19, 1961 (Area 2)
Caruth, Luther J. – July 29, 1888 – December 12, 1952 (Area 2)
Caruth, Millie Elizabeth – April 3, 1890 – March 21, 1966 (Area 2)
Caruth, Thomas B. – September 7, 1890 – October 16, 1965 (Area 2)
Caruth, William F. – April 6, 1885 – March 8, 1962 (Area 2)
Caruth, Willie A. – November 13, 1877 – May 7, 1927 (Area 2)
Carver, Aden – August 6, 1891 – only date (grave not found in November 2006)
Carver, Mattie L. – October 9, 1886 – August 25, 1966 (Area 2)
Catlett, Clara M. – January 1, 1854 – August 11, 1926 (Area 1)
Catlett, Isaac S. Col. – January 6, 1839 – May 9, 1918 (Area 1)
Chandler, Bruce – January 29, 1909 – March 8, 1977 – U.S. Navy WWII (Area 2)
Chatman, Frazier – May 16, 1903 – December 17, 1975 (Area 4)
Chatman, Herbert C. Jr. – 1932 – 1934 (grave not found in November 2006)
Chatman, Herbert H. – July 6, 1913 – May 14, 1984 (Area 4)
Chatman, Lumia – August 5, 1911 – October 30, 2003 (Area 4)
Chatman, Mercy Lee – July 4, 1907 – April 20, 1968 (Area 4)
Cheek, Elton A. – April 4, 1904 – August 19, 1975 – DS with Lillian A. Cheek (Area 4)
Cheek, Lillian A. – October 27, 1906 – Only date – DS with Elton A. Cheek (Area 4)
Chrisp, Baby # 1 – no dates (Area 1)
Chrisp, Baby # 2 – no dates (Area 1)
Chrisp, Bernice O. – February 14, 1910 – December 30, 1987 – DS with Robert F. Chrisp (Area 1)
Chrisp, Corrine – October 25, 1907 – March 1, 1930 (Area 1)
Chrisp, Ellis – February 20, 1895 – December 28, 1961 – Pvt. Co K 38th Inf. Div WWI (Area 2)
Chrisp, Infant – no dates (Area 1)
Chrisp, Mary A. – November 15, 1897 – February 16, 1899 – daughter of W.H. & M.F. Chrisp (Area 1)

Chrisp, Mattie F. – March 11, 1865 – September 16, 1958 (Area 1)
Chrisp, Robert F. – December 16, 1906 – November 15, 1986 – DS with Bernice O. Chrisp (Area 1)
Chrisp, Robert W. – no dates – Co. A Ark Inf C.S.A (Area 1)
Chrisp, Ruth V. – January 29, 1900 – April 15, 1981 (Row 2)
Chrisp, W.H. – December 4, 1865 – November 27, 1940 (Area 1)
Chrisrian, Jamie N. – June 13, 1935 – only date – DS with James C. Christian (Area 3)
Christian, James C. – August 8, 1933 – only date – DS with Jamie N. Christian (Area 3)
Clark, Bertha F. – November 2, 1902 – August 5, 1972 – DS with Henry H. Clark (Area 2)
Clark, D. H. – March 26, 1847 – July 12, 1924 – husband of Mary L. Clark (Area 2)
Clark, Fannie – April 6, 1890 – July 13, 1934 – wife of H.H. Clark (Area 2)
Clark, Harry H. – 1898 – 1936 (Area 2)
Clark, Heber M. – 1896 – 1933 (Area 2)
Clark, Henry H. – June 6, 1885 – April 10, 1973 – DS with Bertha F. Clark (Area 2)
Clark, James N. – October 19, 1938 – April 30, 2002 (Area 3)
Clark, John – 1861 – August 9, 1862 (Area 1)
Clark, Mary L. – August 11, 1866 – December 20, 1921 – wife of D.H. Clark (Area 20)
Clark, Welze E. – 1898 – 1938 (Area 2)
Clause, Bill – October 9, 1912 – February 18, 1977 (Area 2)
Clause, Everett R. – March 18, 1900 – September 3, 1986 (grave not found in November 2006)
Clause, Glen – August 22, 1922 – November 1, 1977 (grave not found in November 2006)
Clause, Jerry Wayne Jr. – January 27, 1969 – March 4, 1999 – Cpl. U.S. Marines Corps (Area 3)
Clause, John Loyd – December 7, 1930 – April 29, 2003 – husband of Geneva Huff Clause (Area 5)
Clause, Luella – 1908 – 1934 (Area 2)
Clay, Anna Mae – October 14, 1929 – January 5, 1969 (Area 3)
Clay, Henry Sr. – September 23, 1943 – November 22, 1998 – DS with LaDonna Clay (Area 4)
Clay, Homer G. – January 21, 1902 – June 20, 1979 – DS with Tellie A. Clay (Area 3)
Clay, LaDonna – October 24, 1942 – Only date – DS with Henry Clay Sr. (Area 4)
Clay, Tellie A. – April 1, 1904 – January 6, 1991 – DS with Homer G. Clay (Area 3)
Cleveland, Minnie – June 30, 1917 – only date (grave not found in November 2006)
Coble, Arthur L. – December 15, 1886 – October 5, 1961 – DS with Martha W. Coble (Area 3)
Coble, Martha W. – September 9, 1890 – September 3, 1972 – DS with Arthur L. Coble (Area 3)
Cofer, Mineral F. – April 21, 1927 – August 16, 1995 – U.S. Navy WWII (Area 2)
Coffman, Helen – January 28, 1928 – only date – DS with Mae Coffman (Area 3)
Coffman, Mae – June 7, 1904 – June 5, 1972 – DS with Helen Coffman (area 3)
Cole, Evelyn – March 4, 1920 – only date – DS with Vernon L. Cole (Area 2)
Cole, Mereala – May 19, 1877 – November 15, 1905 (Area 1)
Cole, O. P. – October 1, 1866 – December 6, 1946 (Area 2)
Cole, Sarah F. – February 22, 1861 – March 2, 1940 (Area 2)
Cole, Vernon L. – June 15, 1920 – April 20, 2002 – DS with Evelyn Cole (Area 2)
Coleman, Matthew – December 15, 1905 – June 13, 1977 (Area 2)
Collins, Alfred O. – June 17, 1890 – March 13, 1971 – DS with Anna Mae Collins (Area 3)
Collins, Anna Mae – March 28, 1892 – January 14, 1968 – DS with Alfred O. Collins (Area 3)
Collins, Ettie Hopper – September 28, 1910 – April 4, 2001 (Area 2)
Collins, Gladys L. – January 16, 1897 – only date – DS with John S. Collins (Area 2)
Collins, Hosie Lee – April 4, 1900 – May 8, 1965 (Area 2)

Collins, J.A. "Judy" – July 4, 1945 – only date – DS with J.M. "Jimmy" Collins (Area 4)
Collins, J.M. "Jimmy" – June 13, 1938 – June 17, 2005 – DS with J.A. "Judy" Collins (Area 4)
Collins, James E. – February 9, 1924 – March 24, 1975 – Pvt. U.S. Army WWII (Area 3)
Collins, John S. – October 18, 1892 – March 27, 1962 – DS with Gladys L. Collins (Area 2)
Collins, L.J. – June 1, 1925 – December 15, 1975 (Area 5)
Collins, Mildred – October 15, 1930 – November 17, 1930 – DS with Milton Collins (Area 2)
Collins, Milton – October 15, 1930 – December 4, 1930 – DS with Mildred Collins (Area 2)
Collins, Ronald J. – March 27, 1920 – August 13, 2002 – husband of Rose Collins (Area 4)
Collins, Roy – September 10, 1887 – November 15, 1941 (grave not found in November 2006)
Collinsworth, Carrie S. – 1897 – 1983 – DS with Thomas L. Collinsworth (Area 2)
Collinsworth, Thomas L – 1890 – 1948 – DS with Carrie S. Collinsworth (Area 2)
Connell, Bobby D. – May 15, 1927 – July 13, 2006 (FM) (Area 2)
Connell, Eunie E. – January 20, 1894 – July 6, 1975 – DS with John Robert Connell (Area 2)
Connell, John Robert – February 11, 1890 – February 25, 1972 – DS with Eunie Connell (Area 2)
Conway, Tricia Claire – October 10, 1970 – September 17, 1981 (Area 4)
Cook, Cecil Z. – July 4, 1911 – November 15, 2003 – DS with Ruby I. Cook (Area 3)
Cook, Ruby L. – January 15, 1914 – July 2, 2003 – DS with Cecil Z. Cook (Area 3)
Coon, Charles Edward – died January 22, 1930 – only date – Fireman 3C U.S.N.R.F (Area 2)
Cooper, Patrick S. – May 17, 1964 – February 21, 1971 (Area 2)
Corbitt, Annie J. – November 11, 1901 – August 5, 1985 (Area 2)
Corbitt, Blanche Ebell – April 20, 1927 – March 20, 1928 (Area 2)
Corbitt, Clyde R. – August 24, 1906 – July 28, 1984 – DS with Lucille B. Corbitt (Area 2)
Corbitt, Jack Robert – March 21, 1925 – June 24, 1926 (Area 2)
Corbitt, L.C. Jr. – January 18, 1953 – February 19, 1988 – Captain, U.S. Army – DS with Mary Ellen Corbitt (Area 2)
Corbitt, Lucille B. – July 14, 1908 – May 25, 1983 – DS with Clyde R. Corbitt (Area 2)
Corbitt, Mary Ellen – March 22, 1953 – only date – DS with L.C. Corbitt Jr. (Area 2)
Corbitt, Roy Bennie – June 29, 1932 – February 12, 1999 (Area 2)
Corbitt, Roy E. – January 21, 1900 – December 29, 1972 (Area 2)
Covington, Helen Ruth Crisco Jones – died March 27, 2004 – age 81 years (grave not found in November 2006)
Cowan, Essie Lee – March 28, 1913 – September 23, 2001 – wife of Rob Cowan (Area 4)
Cowan, Laura – August 31, 1883 – March 31, 1961 (Area 4)
Cowan, Rob – July 17, 1893 – May 27, 1971 – husband of Essie Lee Cowan (Area 4)
Cowan, Robert Wayne Jr. – September 14, 1947 – March 12, 2001 – S/P4 U.S. Army (Area 4)
Cox, Ethel – June 12, 1895 – May 22, 1994 – DS with Fred Cox (Area 2)
Cox, Fred – August 2, 1888 – February 23, 1971 – DS with Ethel Cox (Area 4)
Cox, Maudie Lee – September 30, 1917 – December 28, 1977 (Area 1)
Cox, Mrs. Tyler – died May 20, 1930 – age c80 (unmarked grave) (from published obituary)
Cox, Sattie Payne – April 11, 1851 – January 26, 1926 – wife of L.A. Cox (Area 2)
Cox, Willie Earl – September 17, 1900 – September 27, 1972 (Area 1)
Cranford, A. Dean – March 10, 1933 – only date – DS with C. Don Cranford (Area 5)
Cranford, C. Don – July 4, 1936 – only date – DS with A. Dean Cranford (Area 5)
Cranford, Sidney W. – July 21, 1904 – December 12, 1958 – DS with Wilma L. Cranford (Area 3)
Cranford, Wilma L. – July 10, 1910 – November 9, 2006 – DS with Sidney W. Cranford (Area 3)

Craven, Adler L. – February 6, 1891 – August 15, 1895 – daughter of I.N. and E.S. Craven (Area 1)
Craven, Betty Lou – March 28, 1933 – March 7, 1991 – DS with Leslie J. Craven (Area 1)
Craven, George W. – April 7, 1894 – January 11, 1981 – DS with Mable I. Craven (Area 1)
Craven, Leslie J. – July 15, 1934 – June 3, 2000 – DS with Betty Lou Craven (Area 1)
Craven, Linda Anita – November 25, 1962 – August 17, 1980 (Area 1)
Craven, Mable I. – September 8, 1903 – January 25, 1988 – DS with George W. Craven (Area 1)
Crisco, C. A. – February 14, 1844 – July 30, 1923 – DS with Martha Crisco (Area 2)
Crisco, Glen S. – March 12, 1922 – December 23, 2000 – DS with Maxine R. Crisco (Area 3)
Crisco, Grover – November 18, 1892 – May 15, 1965 – DS with Mary L. Crisco (Area 3)
Crisco, Kate K. – February 10, 1891 – January 23, 1973 – DS with Roy L. Crisco (Area 3)
Crisco, Martha – April 25, 1840 – December 1, 1917 – DS with C.A. Crisco (Area 2)
Crisco, Mary L. – February 6, 1896 – September 2, 1980 – DS with Grover Crisco (Area 2)
Crisco, Maxine R. – May 1, 1928 – February 21, 1998 – DS with Glen S. Crisco (Area 3)
Crisco, Mollie – 1861 – 1938 – DS with Tom Crisco (Area 2)
Crisco, Randall D. – August 5, 1954 – August 18, 1989 – Sgt. U.S. Army (Area 3)
Crisco, Roy L. – July 3, 1889 – December 5, 1962 – DS with Kate K. Crisco (Area 3)
Crisco, Tom – 1864 – 1921 – DS with Mollie Crisco (Area 2)
Crisco, Wilbur – November 18, 1892 – May 15, 1965 (grave not found in November 2006)
Crisp, Mattie – died September 26, 1958 – age 93 years (unmarked grave) (from published obituary)
Critz, Gracy – July 16, 1878 – February 14, 1900 (Area 1)
Critz, Robert – January 4, 1868 – September 6, 1937 (Row 1)
Critz, Rosie – September 1, 1870 – August 1, 1936 (Area 1)
Crow, Frank M. – died April 12, 1958 – age 63 years (unmarked grave) (from published obituary)
Crow, Ruby – no dates (grave not found in November 2006)
Cullum, Herbert J. – 1920 – 1986 – Pfc. U.S. Army WWII (grave not found in November 2006)
Current, Susan – 1854 – 1899 (Area 2)
Currier, Harry Dolen – May 1, 1945 – September 21, 1965 (grave not found in November 2006)
Currier, Henry C. – January 3, 1919 – September 21, 1965 (grave not found in November 2006)
Currier, Robert Lee – November 18, 1943 – August 21, 1965 (grave not found in November 2006)
Curry, Brother – no dates (Area 1)
Curry, Elmer – March 24, 1890 – April 17, 1922 (Area 1)
Curry, Father – no dates (Area 1)
Curry, Letha Ada – November 19, 1856 – March 22, 1928 – wife of T.M. Curry (Area 1)
Curtis, Elizabeth W. – June 19, 1924 – April 13, 1998 (Area 4)
Dale, Dorothy Lillian – August 16, 1899 – August 31, 1991 – DS with Betty Dale Spencer (sister) (Area 3)
Dale, Kenneth Wayne – August 24, 1940 – October 13, 1948 (Area 2)
Dale, William Wayne – October 17, 1919 – July 28, 1989 (Area 2)
Daniels, James M. – 1849 – 1923 – DS with Lorene E. Daniels (Area 2)
Daniels, Lorene E. – 1851 – 1920 – DS with James M. Daniels (Area 2)
David, John B. Jr. – November 5, 1915 – June 5, 1980 (grave not found in November 2006)
Davis, Collet M. – May 22, 1917 – October 22, 1989 – DS with Genevieve W. Davis (Area 2)
Davis, E.G. – April 18, 1836 – January 12, 1884 – DS with Virginia A. Davis (Area 1)
Davis, Elsie May – February 4, 1907 – August 11, 1967 (Area 2)

Davis, Elvis – February 17, 1906 – February 8, 1969 – Pvt. U.S. Army WWII (Area 2)
Davis, Etta – November 8, 1884 – July 4, 1971 – DS with John B. Davis Sr (Area 2)
Davis, Genevie W. – December 9, 1919 – only date – DS with Collet M. Davis (Area 2)
Davis, George H. – June 24, 1857 – January 4, 1915 (Area 1)
Davis, John B. Jr. – November 5, 1915 – June 5, 1980 (Area 2)
Davis, John B. Sr. – June 7, 1870 – May 28, 1956 – DS with Etta Davis (Area 2)
Davis, Julia Ann – December 29, 1947 – February 24, 1950 (Area 2)
Davis, Lillian L. – June 5, 1918 – only date (grave not found in November 2006)
Davis, Mary B. – February 5, 1857 – February 13, 1907 – daughter of Martin Luther and Martha Jane Elledge (Area 1)
Davis, Sarah M. – August 25, 1832 – June 16, 1907 (Area 1)
Davis, Virginia A. – January 27, 1841 – March 1, 1909 – DS with E.G. Davis (Area 1)
Davis, William E. "Bill" – August 19, 1904 – May 7, 1986 (Area 2)
Day, Carrie – September 15, 1882 – January 25, 1980 (Area 4)
Day, Deloris – July 30, 1914 – August 6, 1979 (Area 4)
Day, Milton Henry – 1915 – 1980 – Tec4 U.S. Army WWII (Area 4)
Deadmon, Alene – November 11, 1916 – June 17, 1998 – DS with C. Leon Deadmon (Area 2)
Deadmon, Barbara Lucille – September 12, 1933 – September 15, 1933 – daughter of Leon and Alene Deadmon (Area 2)
Deadmon, C. Leon – April 3, 1914 – November 8, 1984 – S1 U.S. Navy WWI – DS with Alene Deadmon (Area 2)
Dean, Fern – October 15, 1946 – only date (Area 2)
Defir, S. C. – August 7, 1845 – July 8, 1920 (Area 2)
Demaree, Dewey Carl – August 7, 1936 – August 31, 2000 – U.S. Navy Korea (Area 2)
Demaree, Lois Jean – September 4, 1934 – May 4, 1992 (Area 2)
Dennis, Albert B. – April 19, 1918 – August 11, 1972 (grave not found in November 2006)
Dennis, Arbie Reaves – June 10, 1908 – April 30, 1992 – DS with John Foster Dennis (Area 2)
Dennis, Jim – March 10, 1872 – March 7, 1964 – DS with Sallie Dennis (Area 1)
Dennis, John Foster – August 16, 1907 – February 10, 1994 – DS with Arbie Reaves Dennis (Area 2)
Dennis, Lillian L. – July 5, 1918 – March 12, 2001 (grave not found in November 2006)
Dennis, Sallie – February 5, 1883 – March 28, 1951 – DS with Jim Dennis (Area 1)
Dennis, William L. – June 5, 1918 – only date (grave not found in November 2006)
DePriest, Naomi R. – May 3, 1938 – only date – DS with William D. DePriest (Area 1)
DePriest, Steven Michael – May 18, 1974 – September 17, 1979 (Area 1)
DePriest, William D. – March 18, 1942 – September 3, 1999 – DS with Naomi R. DePriest (Area 1)
Dickens, Clarice – June 16, 1925 – March 5, 2006 (FM)
Dobbins, Adga M. – July 4, 1882 – April 4, 1972 – DS with George M. Dobbins (Area 2)
Dobbins, Eloise M. – July 9, 1923 – Only date – DS with Wilbur O. Dobbins (Area 2)
Dobbins, George M. – July 12, 1883 – November 11, 1976 – DS with Adga M. Dobbins (Area 2)
Dobbins, Morgan Haley – March 11, 1921 – only date – S2 U.S. Navy (grave not found in November 2006)
Dobbins, Wilbur O. – June 4, 1918 – December 14, 1983 – S1 U.S. Navy WWII – DS with Eloise M. Dobbins (Area 2)
Dockens, Wilbert Owen – March 9, 1923 – November 19, 1939 (Area 1)
Dockens, Mary Betty – 1861 – 1947 (Area 1)

Dodd, Eliza – 1817 – 1896 (Area 1)
Dodson, Clarence B. – July 12, 1884 – September 16, 1957 – DS with Vallie M. Dodson (Area 2)
Dodson, Conway C. – June 10, 1916 – April 14, 1975 (Area 2)
Dodson, Emma B. – 1881 – 1946 – DS with R. Thomas Dodson (Area 2)
Dodson, Jess B. – September 14, 1908 – March 27, 1949 (Area 2)
Dodson, Martha – 1854 – 1905 – DS with W.T. Dodson (Area 2)
Dodson, R. Thomas – 18?? – 1933 (Area 2)
Dodson, Vallie M. – June 19, 1882 – December 26, 1973 (Area 2)
Dodson, W. T. – 1848 – 1927 – DS with Martha Dodson (Area 2)
Dodson, Wilson M. – November 4, 1912 – July 26, 1915 (Area 2)
Dokin, Matthew H. – October 6, 1933 – only date – Pvt. S.N. Corps (Area 1)
Donnell, Eunie E. – January 20, 1894 – July 6, 1975 (grave not found in November 2006)
Donnell, John Robert – February 11, 1890 – February 25, 1972 (grave not found in November 2006)
Donnell, Wanda V. (Rev) – February 2, 1927 – June 9, 1987 (Area 3)
Douglas, David W. Jr. “Doug” – February 1, 1962 – January 5, 1994 (Area 3)
Douglas, David W. – May 4, 1938 – November 2, 1981 – DS with Wanda C. Douglas (Area 3)
Douglas, Wanda C. – June 27, 1939 – December 31, 1995 – DS with David W. Douglas (Area 3)
Downes, Estelle R. – July 3, 1946 – only date (Area 4)
DuBose, Connie R. – May 19, 1896 – November 10, 1977 – Pvt. U.S. Army WWI – DS with Willie E. Dubose (Area 2)
DuBose, Elwyn L. – January 19, 1885 – April 10, 1949 (Area 2)
DuBose, Erica Lea – born and died June 12, 1965 – daughter of Mr. and Mrs. Joel DuBose (Area 2)
Dubose, Geneva L. – January 4 1923 – July 22, 1998 – DS with James C. DuBose (Area 3)
DuBose, Ida G. – May 10, 1867 – December 1, 1951 – DS with R.L. DuBose (Area 2)
DuBose, Infant – February 6, 1907 – February 9, 1907 – son of B.L. and L.C. DuBose (Area 2)
DuBose, Infant – May 1, 1941 – only date – son of James C. and Geneva L. DuBose (Area 2)
Dubose, James C. – April 22, 1921 – January 14, 1986 – DS with Geneva L. DuBose (Area 3)
Dubose, Judie K. – October 12, 1942 – only date – DS with Pamela R. Batty (daughter) (Area 2)
DuBose, Leon Robert – September 14, 1891 – October 28, 1973 – DS with Norene Magee DuBose (Area 2)
DuBose, Martha Lavern – March 28, 1940 – September 2, 1940 (grave not found in November 2006)
Dubose, Mary Ellen – September 25, 1946 – October 8, 2005 (Area 3)
DuBose, Myra G. – May 11, 1893 – November 21, 1909 (Area 2)
DuBose, Norene Magee – March 14, 1896 – January 25, 1987 – DS with Leon Robert DuBose (Area 2)
DuBose, R L. – May 2, 1862 – April 23, 1923 – DS with Willie P. DuBose (Area 2)
DuBose, Vida L. – October 9, 1907 – August 29, 1983 – DS with Willie P. DuBose (Area 2)
DuBose, Wade K. – August 29, 1904 – August 12, 1907 – son of R.L. and I.G. DuBose (Area 2)
DuBose, William D. – October 8, 1860 – July 6, 1924 (grave not found in November 2006)
DuBose, Willie E. – April 23, 1904 – April 27, 1963 – DS with Connie R. DuBose (Area 2)
DuBose, Willie P. – August 29, 1904 – June 22, 1989 – DS with R.L. DuBose (Area 2)
Duncan, Albert – no dates – died at age 18 years – son of William and Nancy E. Duncan (Area 1)
Duncan, Chalmus D. – July 4, 1893 – January 8, 1978 – DS with Leona Duncan (Area 3)
Duncan. Charlie J. – October 20, 1913 – January 27, 1964 – Pvt. 325th Arty WWII – DS with Irene L. Duncan (Area 3)

Duncan, Irene L. – November 13, 1914 – March 30, 1993 – DS with Charles J. Duncan (Area 3)
Duncan, Leona – December 12, 1906 – October 17, 1979 – DS with Chalmus D. Duncan (Area 3)
Duncan, Nancy Elizabeth – February 25, 1855 – June 12, 1940 – DS with William Duncan (Area 1)
Duncan, Rosa E. – no dates – died at age 12 years – daughter of William and Nancy E. Duncan (Area 1)
Duncan, Samuel W. – no dates – died at age 7 years – son of William and Nancy E. Duncan (Area 1)
Duncan, William – September 6, 1844 – February 1, 1890 – DS with Nancy Elizabeth Duncan (Area 1)
Durham, Evelyn Gertrude – July 25, 1889 – June 8 1968 – DS with William Lucian Durham (Area 2)
Durham, Mary Ella – died May 16, 1991 – age 66 years (FM) (grave not found in November 2006)
Durham, William Lucian – August 16, 1880 – December 9, 1948 – DS with Evelyn Gertrude Durham (Area 2)
Edwards, J. H. – April 12, 1854 – December 11, 1926 – DS with Mary E. Edwards (Area 2)
Edwards, Mary E. – February 6, 1861 – only date – DS with J.H. Edwards (Area 2)
Eldridge, Iva Bell – May 3, 1913 – July 24, 1966 (grave not found in November 2006)
Elkins, Jackie Marie Short – December 14, 1932 – April 7, 2000 – DS with Avelyn Marsh Smith (Area 3)
Elledge, Cecil Wilbur Sr. – March 15, 1905 – October 5, 1980 – son of Minerva and James Henry Elledge (Area 1)
Elledge, James Henry – c1868 – c1912 – husband of Minerva and son of Martin Luther (not found November 2006)
Elledge, James W. – 1910 – 1968 (Area 1)
Elledge, Lurah – December 15, 1863 – April 2, 1916 (Area 1)
Elledge, Martha Jane – c1856 – August 1892 – wife of Martin Luther (grave not found in November 2006)
Elledge, Martin Luther – May 7, 1834 – January 1912 – husband of Martha Jane Elledge (grave not found in November 2006)
Elledge, Minerva – no dates – wife of James Henry Elledge (grave not found in November 2006)
Elledge, Sidney – 1872 – 1937 – son of Martin Luther Elledge (Area 1)
Elliott, Clinton – March 26, 1923 – November 10, 1995 – DS with Madelyn G. Elliott (Area 2)
Elliott, Lula – February 10, 1896 – February 16, 1986 – DS with W.T. Elliott (Area 2)
Elliott, Madelyn G. – January 27, 1927 – only date – DS with Clinton Elliott (Area 2)
Elliott, W.T. – October 20, 1891 – July 16, 1989 – DS with Lula Elliott (Area 2)
Ellis, Frances Mae – January 9, 1930 – only date – DS with Jeff Ellis Jr. (Area 1)
Ellis, James – February 2, 1873 – March 10, 1950 (grave not found in November 2006)
Ellis, Jeff Jr. – January 6, 1926 – only date – DS with Frances Mae Ellis (Area 1)
Ellis, Preston David – January 25, 1931 – May 6, 2007 – husband of Ethel Ellis
Elzey, Charles S. – 1864 – 1950 – DS with Maude Lee Elzey (Area 1)
Elzey, Infant son – June 31, 1897 – July 29, 1897 – son of Charles S. and Maude Lee Elzey – DS with Millie L. Elzey (Area 1)
Elzey, Maude Lee – 1871 – 1949 – DS with Charles S. Elzey (Area 1)
Elzey, Minnie L. – July 19, 1901 – February 18, 1906 – daughter of Charles S. and Maude Lee Elzey (Area 1)
English, Agnes M. – July 5, 1920 – December 24, 1994 – DS with Jesse I. English (Area 2)

English, Alice M. – January 29, 1900 – January 18, 1986 – DS with Arthur Danil English (Area 2)
English, Alvin J. – September 4, 1901 – July 21, 1968 – DS with Lurline E. English (Area 2)
English, Alvin John Kenneth – February 10, 1929 – June 15, 2002 (Area 2)
English, Andrew Jackson – June 6, 1903 – October 8, 1991 – DS with Mary Elizabeth English (Area 2)
English, Arthur Danil – June 6, 1896 – September 22, 1976 – Pvt. U.S. Army WWI – DS with Alice M. English (Area 2)
English, Jesse L. – January 31, 1917 – April 21, 1988 – DS with Agnes M. English (Area 2)
English, Julia Ann – August 21, 1940 – February 20, 1994 (Area 2)
English, Lurline E. – May 11, 1907 – November 18, 1990 – DS with Alvin J. English (Area 2)
English, Mary Elizabeth – June 1, 1907 – December 7, 2002 – DS with Andrew Jackson English (Area 2)
English, William Earl – April 16, 1943 – September 10, 1991 – Pvt. U.S. Marine Corps Vietnam (Area 4)
Evans, Archie Wilbur – August 2, 1914 – September 8, 1993 – AEM3 U.S. Navy – M/Sgt. U.S. Army WWII (Area 2)
Evans, Clara E. – May 28, 1896 – March 12, 1979 – DS with Walter H. Evans (Area 2)
Evans, Walter H. – May 5, 1891 – April 6, 1972 – DS with Clara E. Evans (Area 2)
Exum, Emet – August 23, 1882 – August 31, 1905 – DS with Ned Exum (Area 2)
Exum, Grundy – September 5, 1851 – November 7, 1888 (Area 1)
Exum, Ned – December 23, 1888 – March 9, 1905 – DS with Emet Exum (Area 2)
Exum, Walter D. – December 30, 1871 – May 2, 1873 (Area 1)
Exum, William – December 11, 1854 – October 8, 1888 (Area 1)
Fair, Flo Ella – October 13, 1938 – August 24, 1991 (Area 5)
Faith, Narvelle Grundy – December 27, 1906 – January 9, 1987 – DS with Norma Oneal Faith (Area 2)
Faith, Norma Oneal – March 30, 1907 – May 17, 1995 – DS with Marvelle Grundy Faith (Area 2)
Farmer, Ethel M. – August 14, 1914 – only date – DS with Robert E. Farmer Jr. (Area 2)
Farmer, Liza Elizabeth – 1886 – 1979 – wife of Robert Farmer (Area 2)
Farmer, Robert E. Jr. – August 30, 1920 – December 29, 1978 – U.S. Army WWII – DS with Ethel M. Farmer (Area 2)
Farmer, Rufus Lee – February 23, 1924 – December 14, 1992 – U.S. Army WWII
Farrar, Elmo – June 20, 1908 – July 3, 1908 – son of S.G. and V.V. Farrar (grave not found in November 2006)
Farrar, Infant – March 24, 1910 – March 24, 1910 – son of S.G. and V.V. Farrar (grave not found in November 2006)
Farrar, Viola – 1872 – 1948 (Area 1)
Finley, Viola Vardaman – August 7, 1902 – March 17, 1989 (Area 3)
Fisher, Beatrice – November 11, 1917 – June 2, 1919 (Area 2)
Fisher, Birt – September 7, 1916 – July 18, 1927 (Area 2)
Fisher, Joe Van – January 22, 1919 – November 15, 1928 (Area 2)
Fisher, Paul – 1889 – 1913 (Area 2)
Fisher, Sheldon B. – March 22, 1884 – November 17, 1951 – DS with Thresa Bush Fisher (Area 2)
Fisher, Thresa – October 3, 1895 – November 6, 1988 – DS with Sheldon B. Fisher (Area 2)

Flanagin, James Hugh – August 24, 1902 – January 31, 1984 – DS with Madge Retta Flanagin (Area 1)

Flanagin, Madge Retta – October 24, 1908 – July 31, 1991 – DS with James Hugh Flanagin (Area 1)

Flanagin, Mary B. – July 26, 1863 – August 14, 1944 (Area 1)

Flanagin, William C. – December 22, 1853 – November 20, 1939 (Area 1)

Fleming, Elizabeth – died September 24, 1917 – only date – wife of C.M. Fleming (Area 2)

Florine, George W. – December 9, 1881 – March 9, 1966 (Area 2)

Floyd, Frank – December 23, 1884 – May 16, 1938 – DS with Lilly Floyd (Area 2)

Floyd, Lilly – December 24, 1889 – September 20, 1925 – DS with Frank Floyd (Area 2)

Foster, Elizabeth Smith Aunspaugh – 1842 – 1937 – wife of John H. Aunspaugh and Marvin Foster (Area 1)

Foster, Marvin – May 5, 1881 – November 12, 1929 (Area 1)

Fox, Cathie Binns – October 4, 1957 – August 8, 1994 (Area 4)

Frances, Hattie Griffin – 1887 – 1978 (grave not found in November 2006)

Freeman, Elizie – died February 17, 1904 – only date – wife of S.C. Freeman (Area 2)

Freeman, Lucretia – November 14, 1860 – December 10, 1965 (Area 2)

Frye, James F. – October 25, 1930 – January 21, 1966 – A1C U.S. Air Force Korea (Area 3)

Fuller, Abbie – February 20, 1928 – September 3, 1994 (grave not found in November 2006)

Fuller, Allie E. – June 12, 1885 – February 8, 1957 – DS with James M. Fuller (Area 5)

Fuller, Barbara E. – March 16, 1947 – December 1, 2004 – DS with Shelby Fuller (Area 1)

Fuller, Charlene – January 12, 1934 – June 12, 1934 – (Area 5)

Fuller, Claudis C. – January 25, 1921 – October 13, 1986 – DS with Irene Fuller (Area 2)

Fuller, Fred – August 5, 1905 – July 5, 1955 (Area 5)

Fuller, Grace M. – May 5, 1892 – October 25, 1970 (Area 2)

Fuller, Helen D. – November 16, 1912 – January 4, 1987 – DS with William B. Fuller (Area 1)

Fuller, Ira S. – August 31, 1890 – May 10, 1972 (Area 3)

Fuller, Irene – July 2, 1929 – only date – DS with Claudis C. Fuller (Area 2)

Fuller, James B. – August 21, 1910 – June 9, 1951 (Area 5)

Fuller, James E. "Babe" – August 17, 1885 – May 18, 1939 (Area 2)

Fuller, James Edward – born and died July 16, 1957 – only date (Area 2)

Fuller, James L. – September 14, 1920 – February 21, 1980 – Pvt. U.S. Army WW II – DS with Willie C. Fuller (Area 2)

Fuller, James M. – November 21, 1880 – January 20, 1961 – DS with Allie E. Fuller (Area 5)

Fuller, Joel Thomas – June 20, 1957 – only date (Area 2)

Fuller, John B. – November 30, 1906 – August 17, 1974 – Cpl. U.S. Army (Area 3)

Fuller, John Pershing – May 16, 1918 – January 1, 1994 – Pvt. U.S. Army WWII – DS with Wava I. Fuller (Area 5)

Fuller, Larry Alan – December 4, 1947 – March 31, 1999 – SP/5 U.S. Army Vietnam (Area 2)

Fuller, Lillian Faye – October 13, 1910 – April 4, 1983 (Area 3)

Fuller, Mark Eugene – September 19, 1932 – January 26, 2006 (Area 5)

Fuller, Mary Ann – October 20, 1937 – July 21, 2006 – DS with W.H. Fuller (Area 1)

Fuller, Milton E. – March 27, 1901 – December 14, 1971 – DS with Myrtle Fuller (Area 2)

Fuller, Myrtle – July 2, 1913 – January 15, 1966 – DS with Milton E. Fuller (Area 2)

Fuller, Ronnie Lee – August 30, 1958 – May 1, 2002 (Area 1)

Fuller, Ruby M. – July 1, 1910 – March 27, 2001 (Area 2)

Fuller, Ruby – January 14, 1910 – April 1, 1986 – DS with Fred Fuller (Area 5)
Fuller, Ruth G. – January 1, 1907 – December 16, 1987 (Area 3)
Fuller, Shelby – September 2, 1942 – Only date – DS with Barbara E. Fuller (Area 1)
Fuller, W.H. – February 17, 1936 – Only date – DS with Mary Ann Fuller (Area 1)
Fuller, Wava I. – December 7, 1927 – August 25, 2004 – DS with John Pershing Fuller (Death date on FM only) (Area 5)
Fuller, William B. – February 16, 1908 – April 25, 1999 – DS with Helen D. Fuller (Area 1)
Fuller, William P. – 1911 – 1980 – S/Sgt U.S. Army WWII (Area 3)
Fuller, William Scott – January 4, 1883 – November 15, 1972 (Area 3)
Fuller, Willie C. – January 7, 1922 – April 3, 1998 – DS with James L. Fuller (Area 2)
Gaines, Alpine – September 9, 1880 – November 14, 1970 – DS with Delana Lee Gaines (Area 3)
Gaines, Charles Donald – October 9, 1919 – May 31, 1977 (Area 3)
Gaines, Delana Lee – October 21, 1889 – April 21, 1968 – DS with Alpine Gaines (Area 3)
Gaines, James – February 9, 1924 – April 24, 1975 – Pvt. U.S. Army WWII (Grave not found in November 2006)
Gaines, Nadine M. – July 27, 1915 – November 12, 2004 (Area 3)
Gaines, Paul L. – January 24, 1946 – March 27, 1997 (Area 3)
Gaines, Robert Berl Jr. – March 29, 1966 – July 29, 2000 (FM) (Area 3)
Gaines, Robert Berl – October 3, 1940 – October 4, 1990 – U.S. Army (Area 3)
Gaines, Willard B. – November 20, 1908 – June 19, 1985 – DS with Nadine M. Gaines (Area 3)
Ganus, ? – February 10, 1977 – Only date (Area 2)
Gardner, Irene G. – died February 18, 1995 – age 90 years, 6 months and 22 days (FM) (Area 2)
Garner, Minnie Lee – May 23, 1907 – June 23, 1968 (Area 2)
Garner, Robert E. – February 8, 1932 – December 19, 1984 – U.S. Navy Korea (Area 2)
Garrison, Edward – February 14, 1914 – September 6, 1941 (Area 2)
Garrison, Lois Branch – July 30, 1880 – January 3, 1902 – wife of H.E. Garrison (Area 2)
Gateley, John H. – March 4, 1894 – June 10, 1961 – 117th Inf 30th Div WWI – DS with Lottie M. Gateley (Area 3)
Gateley, Lottie M. – December 27, 1893 – September 23, 1977 – DS with John H. Gateley (Area 3)
Gateley, Raymond Emerson – April 5, 1928 – April 8, 2008 – husband of Mary Anne Gateley – son of John and Lottie Gateley
Gather, Mary Elizabeth – September 18, 1940 – May 13, 1997 (Area 5)
Gibson, Angelina – December 25, 1863 – May 28, 1954 (unmarked grave) death record at Westbrook Funeral Home
Gilliam, Fannie – 1891 – 1982 (Area 2)
Gilliam, H. B. – 1890 – 1953 (Area 2)
Gilliam, Hazel Langley – June 2, 1925 – January 5, 1982 – DS with Henry B. Gilliam Jr (Area 3)
Gilliam, Henry B. Jr. – April 17, 1925 – only date – DS with Hazel Langley Gilliam (Area 3)
Gilliam, James A. – May 19, 1911 – September 28, 1981 – DS with Ruth C. Gilliam – Tec5 U.S. Army WWII (Area 3)
Gilliam, James R. – December 1, 1944 – November 15, 1990 (Area 3)
Gilliam, Mollie E. – November 11, 1856 – March 31, 1914 – wife of John Gilliam (Area 1)
Gilliam, Ruth C. – September 26, 1917 – March 12, 2002 – DS with James A. Gilliam (Area 3)
Gilliam, Virginia Belle – January 23, 1898 – September 16, 1963 (Area 1)
Gillis, Billie V. – August 1, 1936 – November 24, 1984 (Area 2)

Gipson, Wesley – March 14, 1858 – October 11, 1908 (Area 2)
Glass, Emmer – 1857 – 1922 (Area 2)
Glasscock, Infant son – born and died March 24, 1963 (Grave not found in November 2006)
Gooch, Hazel – December 18, 1924 – August 11, 1994 (FM) (grave not found in November 2006)
Gouge, Earl Nelson – December 18, 1926 – August 11, 1994 – U.S. Army WWII (Area 2)
Graham, Bradford E. – March 20, 1927– September 17,1974 – Pfc. U.S. Army (grave not found in November 2006)
Graham, Eugene – April 11, 1925 – August 19, 1986 (Area 2)
Graham, Gilbert D. – October 3, 1922 – May 23, 1992 – DS with Louise H. Graham (Area 2)
Graham, James H. – September 5, 1949 – June 29, 1950 (grave not found in November 2006)
Graham, Louise H. – September 10, 1926 – February 3, 2004 – DS with of Gilbert D. Graham (Area 2)
Graham, Tony Dale – 1966 – 1999 (FM) (grave not found in November 2006)
Gray, Ollie Lee – no dates – infant (grave not found in November 2006)
Green, Gerald T. – April 17, 1925 – August 25, 2003 – Pfc. U.S. Army WWII – DS with Wanda B. Green (Area 3)
Green, Wanda B. – July 21, 1928 – only date – DS with Gerald T. Green (Area 3)
Griffin, Carol A. – July 31, 1925 – October 25, 1990 – DS with Glen Griffin (Area 3)
Griffin, Glen – January 20, 1925 – only date – DS with Carol A. Griffin (Area 3)
Griffin, Pamela Jean – July 17, 1951 – May 2, 2000 (Area 3)
Grissom, Claudia L. – died August 8, 1956 (unmarked grave) (from published obituary)
Grubbs, Hampton L. – August 15, 1893 – March 15, 1969 – DS with Isabell J. Grubbs (Area 3)
Grubbs, Isabell J. – July 1, 1896 – November 26, 1993 – DS with Hampton L. Grubbs (Area 3)
Guinn, Charles E. – November 11, 1876 – January 17, 1955 – DS with Molly M. Guinn (Area 2)
Guinn, Molly M. – December 11, 1884 – April 4, 1926 – DS with Charles E. Guinn (Area 2)
Guthrey, John Cook – February 16, 1862 – April 27, 1930 (Area 2)
Hadwick, Flossie – 1881 –1944 – wife of A. J. Hadwick (Area 5)
Hahn, Laura – 1865 – 1948 (grave not found in November 2006)
Hahn, Sam L. – 1870 – 1941 (grave not found in November 2006)
Hale, Amanda Mae – July 9, 1935 – November 20, 2005 – DS with Milton Truman Hale (Area 3)
Hale, Gary Lee – October 9, 1956 – October 12, 1956 – DS with Tony Max (brother) (Area 2)
Hale, Milton Truman – Sept. 25, 1932 – Feb. 1, 2004 – DS with Amanda Mae Hale (Area 3)
Hale, Tony Max – May 11, 1954 – only date – DS with Gary Lee Hale (Area 2)
Hall, Ella Carter – March 3, 1874 – September 15, 1949 (Area 1)
Hall, Harvey – December 5, 1889 – May 29, 1972 – DS with Nettie R. Hall (Area 3)
Hall, Jack Walker – November 3, 1919 – August 31, 1964 (Area 3)
Hall, Nettie R. – August 8, 1895 – November 30, 1968 – DS with Harvey Hall (Area 3)
Haller, Ament – July 20, 1908 – September 12, 1976 – DS with Sam C. Haller (Area 1)
Haller, Sam C. – March 29, 1891 – March 6, 1961 – DS with Ament Haller (Area 1)
Hambrick, Alma Louise – March 1, 1933 – January 10, 1990 – DS with J.D. Hambrick (Area 3)
Hambrick, Dewey S. – July 16, 1905 – December 16, 1962 – DS with Nellie M. Hambrick (Area 3)
Hambrick, J.D. – December 30, 1931 – March 23, 1984 – DS with Alma Louise Hambrick (Area 3)
Hambrick, Michael Scott – July 23, 1975 – December 8, 2005 (Area 3)
Hambrick, Nellie M. – July 24, 1908 – only date – DS with Dewey S. Hambrick (area 3)

Hambrick, Olivia Gail – September 10, 2002 – September 4, 2003 – daughter of Billy and Lisa Hambrick (Area 3)

Hancock, Gary Mike – October 31, 1951 – only date (Area 4)

Hancock, Mary Ann – March 10, 1955 – only date (Area 4)

Hancock, Raymond A. – April 27, 1913 – only date (Area 4)

Hancock, Ruth – August 18, 1916 – only date (Area 4)

Hannah, Clarence – no dates (Area 5)

Hannah, C.W. – October 25, 1958 – only date (grave not found in November 2006)

Hannah, Charley Edward – August 25 1879 – January 31, 1960 (Area 2)

Hannah, Jean – no dates (Area 5)

Hannah, Rosia Zora – May 23, 1913 – April 2, 1986 (Area 2)

Hannah, Velma – November 16, 1899 – September 16, 1929 (Area 5)

Hanner, Hazel Alma – September 22, 1893 – October 15, 1960 (Area 2)

Hanner, Oscar Allan – February 20, 1915 – August 5, 1961 – Sgt. 1881 Svc Comd unit WWII (Area 2)

Harlan, Cletus Dale – September 18, 1922 – April 25, 2003 – G.M. 2 U.S. Navy WWII – husband of Gearlene Harlan (Area 2)

Harrell, Kelsie – August 20, 1931 – only date – Pfc. U.S. Army 310th Abn Bn (Area 2)

Harris, Harry B. – July 27, 1906 – December 20, 1909 (grave not found in November 2006)

Harris, Lester – September 21, 1881 – August 12, 1884 (Area 1)

Harris, Omer – February 18, 1884 – September 3, 1895 (Area 1)

Harris, Susan D. – November 25, 1855 – September 13, 1944 – DS with Thomas M. Harris (Area 1)

Harris, Teryl Ann – November 15, 1946 – September 22, 1999 – DS with William Mark Harris (Area 4)

Harris, Thomas M. – May 16, 1851 – December 19, 1926 – DS with Susan D. Harris (Area 1)

Harris, Wilmyt “Dick” – September 5, 1892 – December 4, 1963 (Area 1)

Harris, Walter – December 26, 1879 – August 19, 1884 (grave not found in November 2006)

Harris, William Mark – October 4, 1945 – only date – DS with Terry Harris (Area 4)

Harris, Willie – October 16, 1897 – August 21, 1975 (Area 1)

Harrison, Harold Nelson – May 19, 1925 – April 2, 1981 – Pvt. U.S. Army WWII – DS with Maxine Harrison (Area 2)

Harrison, Helen D. – November 1, 1907 – June 28, 1989 – DS with Jeff D. Harrison (Area 2)

Harrison, Jeff D. – December 13, 1903 – October 25, 1956 – DS with Helen D. Harrison (Area 2)

Harrison, Maxine – March 30, 1926 – only date (Area 2)

Hartman, Conrad Eugene – May 29, 1949 – February 8, 1996 – SP/5 U.S. Army Vietnam (Area 2)

Hartzog, Elvina E. – November 20, 1874 – September 24, 1916 – wife of J.B. Hartzog (Area 2)

Hartzog, Joshua B. – February 3, 1866 – May 27, 1939 – *MEDAL OF HONOR WINNER* (Area 2)

Hartzog, Madie Belle – December 10, 1884 – April 27, 1977 (Area 2)

Hartzog, Warren C. – May 15, 1909 – October 10, 1925 (Area 2)

Hassell, Corinne N. – August 15, 1902 – April 2, 1979 – DS with Elmer B. Hassell (Area 3)

Hassell, Elmer B. – January 15, 1902 – July 4, 1959 – DS with Corinne N. Hassell (Area 3)

Hastings, Bugie B. – January 25, 1912 – April 8, 1989 (Area 2)

Hastings, Rosie Lee – August 4, 1915 – January 8, 2000 (Area 2)

Hays, Emmett Lee – October 9, 1921 – September 20, 1986 (Area 3)

Hays, Mary Kathryn Smith – September 25, 1927 – January 6, 2006 (Area 3)

Head, Alice – July 23, 1890 – March 23, 1959 – DS with Leon S. Head (Area 1)
Head, Leon S. – October 31, 1895 – January 14, 1980 – Pvt. U.S. Army WWI (Area 1)
Helms, Mary – November 10, 1925 – February 22, 1986 – DS with Merle Helms (Area 3)
Helms, Merle – October 10, 1919 – November 11, 1995 – DS with Mary Helms (Area 3)
Hemmer, Robert Neil – April 27, 1923 – February 13, 1995 (grave not found in November 2006)
Hemingway, Willa D. Hodges – July 15, 1941 – only date – DS with Johnnie B. Hodges McFarlin (Sister) (Area 3)
Henderson, Ala Mae – died July 24, 2002 – age 79 years (grave not found in November 2006)
Henderson, Charlie – 1843 – 1905 (grave not found in November 2006)
Henderson, Lillian Owens – December 30, 1921 – December 26, 1994 (Area 3)
Henderson, Lucinda – November 19, 1856 – August 12, 1926 (Area 5)
Henderson, Mrs. L.P. – 1856 – 1928 (grave not found in November 2006)
Henderson, Nancy Fortner – June 10, 1893 – April 10, 1921 (Area 5)
Henderson, Ola Hanner – July 24, 1923 – July 29, 2002 (Area 2)
Henderson, Venson M. Sr. – July 22, 1909 – August 14, 1994 – DS with Virginia G. Henderson (Area 3)
Henderson, Virginia G. – December 11, 1915 – July 18, 1967 – DS with Venson M. Henderson Sr. (Area 3)
Henderson, W.T. – January 1, 1872 – August 14, 1914 (Area 2)
Henderson, Walter E. – July 15, 1889 – March 24, 1967 (Area 5)
Henry, Lloyd Alton – October 10, 1917 – January 11, 1970 (Area 1)
Henry, Nell Murray – March 4, 1921 – February 24, 1995 (Area 1)
Hicks, Bernice H. – March 18, 1919 – July 21, 1998 (Area 3)
Hicks, Rose – December 6, 1927 – November 24, 1992 (Area 3)
Hightower, Alice – November 27, 1910 – December 19, 1987 (Area 2)
Hill, Essex – 1898 – 1927 (Area 4)
Hill, Freddie Anthony – February 19, 1955 – December 21, 1990 (Area 1)
Hill, Gloria Ida – October 26, 1924 – June 16, 1993 – DS with William Hill (Area 4)
Hill, Lewis F. – 1871 – 1936 – DS with Sallie D. Hill (Area 2)
Hill, Sallie D. – 1876 – 1959 – DS with Lewis F. Hill (Area 2)
Hill, William – September 11, 1922 – only date – DS with Gloria Ida Hill (Area 4)
Hodges, Eugene T. – May 25, 1905 – August 9, 1976 (Area 3)
Hodges, Jennie Lee – October 2, 1909 – December 18, 1960 (Area 3)
Hohn, Laura – 1865 – 1948 (Area 2)
Hohn, Sam L. – 1870 – 1941 (Area 2)
Holden, Christopher Dale – December 10, 1978 – November 21, 1979 (Area 2)
Holden, Rodger Dale – November 20, 1953 – December 3, 1989 (Area 2)
Holland, Dr. James C. – December 12, 1807 – May 3, 1887 (Area 1)
Holleman, Florence Williams – November 17, 1907 – September 12, 1997 (Area 5)
Holleman, Jessie C. – April 30, 1937 – only date – DS with Shirley Holleman (Area 2)
Holleman, Shirley Jeanette Cofer – October 2, 1938 – June 13, 2007 – DS with Jessie C. Holleman (Area 2)
Hollenberger, Emily Gray Owen – July 19, 1896 – January 31, 1946 – wife of L.G. Hollenberger (Area 5)
Hollingshead, Hazel – May 11, 1907 – May 10, 1994 (Area 3)

Hollingshead, Jerry Wayne – August 18, 1956 – January 27, 2003 – husband of Sharon Hollingshead (Area 2)
Hollingshead, Thelma Fay – September 6, 1933 – May 18, 1989 (Area 2)
Holloway, Tracy Melinda – June 26, 1967 – June 27, 1997 (Area 5)
Honey, Anne S. – February 25, 1933 – June 18, 1996 – DS with James L. Honey (Area 4)
Honey, Dee Desiree – May 2, 1966 – September 12, 2001 – wife of Robert Honey (Area 4)
Honey, James L. – August 5, 1926 – December 12, 1986 – U.S. Army WWII – DS with Anne S. Honey (Area 4)
Hood, Dallas Jordan – July 26, 2000 – December 7, 2000 (Area 3)
Hoofman, Elsie M. – June 22, 1913 – only date – DS with Myrt A. Hoofman (Area 2)
Hoofman, Myrt A. – May 8, 1909 – November 14, 1986 – DS with Elsie M. Hoofman (Area 2)
Hoolleman, Florence Williams – November 17, 1907 – September 12, 1997 (grave not found in November 2006)
Hopper, Ada M. – 1888 – 1981 – DS with Marion Hopper (Area 2)
Hopper, Gene – January 28, 1946 – October 5, 1993 (Area 2)
Hopper, Leo – 1931 – 1980 – SP/4 U.S. Army Korea (Area 2)
Hopper, Marion – 1877 – 1964 – DS with Ada M. Hopper (Area 2)
Hopper, Virginia Jean – January 31, 1936 – December 29, 1993 (Area 2)
Hopps, Hope Curry – September 28, 1892 – April 14, 1980 (Area 1)
Horn, Adelene L. – December 24, 1922 – November 11, 1986 – DS with John W. Horn (Area 2)
Horn, John W. – May 26, 1914 – June 17, 1974 – Pfc. U.S. Army – DS with Adelene L. Horn (Area 2)
Horner, Clifton Ralph – December 23, 1931 – January 4, 2001 – Sfc. U.S. Army Vietnam (Area 3)
Horner, Sharon – June 24, 1938 – only date – DS with Clifton Ralph Horner (Area 3)
Horton, Eddie May Johnson – May 4, 1932 – December 19, 1965 (Area 4)
Horton, L. M. – February 22 1896 – September 14, 1948 (Area 2)
Hoskins, Elnora English – June 6, 1924 – May 19, 1996
Houston, Frankie H. – October 11, 1912 – only date (Area 2)
Houston, Lori Nicole – June 18, 1972 – November 20, 2002 – (Area 2)
Houston, James M. – February 5, 1937 – only date – DS with Patsy A. Houston (Area 2)
Houston, Kurt James – September 26, 1961 – April 26, 1978 (Area 2)
Houston, Patsy A. – October 21, 1941 – only date – DS with James M. Houston (Area 2)
Howard, Margarette – January 1, 1916 – December 27, 1973 (Area 2)
Howland, Alma W. – August 30, 1911 – December 21, 1986 – DS with Herman D. Howland (Area 2)
Howland, Carol L. – November 21, 1927 – October 15, 2001 – DS with H. Wayne Howland (Area 2)
Howland, Everett L. – May 14 1893 – May 17, 1972 – DS with Thelma H. Howland (Area 2)
Howland, Herman D. – June 30, 1908 – January 7, 1983 (Area 2)
Howland, H. Wayne – June 4, 1930 – only date – DS with Carol L. Howland (Area 2)
Howland, Lewis E. – September 22, 1879 – July 31, 1881 (grave not found in November 2006)
Howland, Minnie Lee – May 4, 1897 – October 16, 1904 (Area 1)
Howland, Thelma H. – October 27, 1898 – June 14, 1985 (Area 2)
Huff, Faye Hensley – January 29, 1908 – December 24, 1988 – DS with Terrill Butler Huff (Area 3)
Huff, Rebecca Faye – June 17, 1943 – December 11, 1979 (Area 3)
Huff, Terrill Butler – August 16, 1905 – January 31, 1977 (Area 3)
Huffstuttler, Elizabeth M. – March 1, 1889 – July 12, 1978 – DS with Henry A. Huffstutter (Area 2)

Huffstutler, Frankie O. – no dates (grave not found in November 2006)
Huffstutler, Henry A. – December 3, 1883 – April 7, 1960 – DS with Elizabeth M. Huffstutter (Area 2)
Hughes, Jason E. – May 13, 1977 – April 8, 2000 (Area 3)
Humble, John W. – November 12, 1874 – June 29, 1955 – DS with Lizzie Humble (Area 2)
Humble, Lizzie – December 14, 1873 – May 26, 1952 – DS with John W. Humble (Area 2)
Hunt, David L. – 1925 – 1983 – S1 U.S. Navy WWII (Area 4)
Huntsman, B. Joe – May 8, 1928 – only date – DS with Freida M. Huntsman (Area 2)
Huntsman, Freida M. – March 23, 1934 – only date – DS with B. Joe Huntsman. (Area 2)
Hutchings, Lewis Edward – November 30, 1914 – July 28, 1996 – Combat WWII – DS with Mary Louise Hutchings (Area 4)
Hutchings, Mary Louise – December 3, 1919 – November 19, 1992 – DS with Lewis Edward Hutchings (Area 4)
Hutchins, Robin Lynette – born and died January 24, 1967 (grave not found in November 2006)
Hynds, David Elmer – December 22, 1887 – September 23, 1977 – DS with Myrtle Henderson Hynds (Area 5)
Hynds, Myrtle Henderson – March 27, 1884 – July 7, 1975 – DS with David Elmer Hynds (Area 5)
Hynds, Oleta – August 16, 1930 – September 6, 1930 (Area 5)
Hynds, Robert D. – August 16, 1937 – June 28, 1938 (Area 5)
Illegible name – October 6, 1868 – January 9, (?) (grave not found in November 2006)
Isbell, Benny L. – May 19, 1864 – January 9, 1869 – DS with Robert J. Isbell (Area 1)
Isbell, Robert J. – October 28, 1867 – November 24, 1867 – DS with Benny L. Isbell (Area 1)
Ivy, Charles H. – May 21, 1922 – November 19, 1994 (Area 3)
Ivy, James F. – June 30, 1883 – March 11, 1961 (Area 3)
Ivy, Willie – March 1, 1893 – November 12, 1966 (Area 3)
J.E.N. – no dates – initials on small stone (grave not found in November 2006)
Jackson, Beatrice L. – September 1, 1920 – July 5, 1989 – DS with E. Glen Jackson (Area 2)
Jackson, E. Glen – January 2, 1923 – August 23, 2006 – DS with Beatrice L. Jackson (Area 2)
Jackson, Florence Cox – 1881 – 1917 (Area 2)
Jackson, Mary L. – January 5, 1904 – May 20, 1983 – DS with Walter F. Jackson (Area 3)
Jackson, Oliver “Cat” – May 24, 1959 – August 29, 1996 (Area 4)
Jackson, Walter F. – October 11, 1894 – August 28, 1980 – Pvt. U.S. Army – DS with Mary L. Jackson (Area 3)
James, Charles W. Sr. – September 28, 1918 – October 24, 1991 (Area 5)
James, Nadine Pratt – November 26, 1919 – March 20, 1970 (Area 5)
Jameson, Margie M. – February 5, 1932 – only date – DS with Thomas E. Jameson (Area 2)
Jameson, Thomas E. – October 30, 1932 – July 13, 1989 – DS with Margie M. Jameson (Area 2)
Jenkins, Danny Wayne – February 27, 1960 – August 3, 1998 (Area 2)
Jenkins, Hazel C. – June 16, 1926 – October 5, 1963 – DS with Willie L. Jenkins (Area 2)
Jenkins, William Logan – died September 14, 1987 – age 44 years (FM) (Area 2)
Jenkins, Willis L. – July 25, 1985 – April 19, 1965 (Area 2)
Jenks, Angela Lynn – May 2, 1976 – March 28, 1991 (Area 1)
Jerome, Wm F. – 1871 – 1946 (Area 2)
Johns, Ima Lee Morgan – July 16, 1932 – only date – DS with M.L. Johns (Area 4)
Johns, M.L. – May 29, 1929 – only date – DS with Ima Lee Johns (Area 4)

Johnson, Annie – January 5, 1852 – May 14, 1918 (Area 1)
Johnson, Betty Ann – March 4, 1942 – June 18, 1990 (Area 4)
Johnson, Bonnie S. – June 4, 1916 – July 22, 1973 – DS with William I. Johnson (Area 1)
Johnson, Bradley Jr. – February 8, 1934 – February 17, 2001 (Area 4)
Johnson, Cathy E. – March 2, 1953 – May 11, 1969 – DS with Melissa Johnson (Area 2)
Johnson, Clarence Leo – June 19, 1931 – only date – DS with Shirley “Sissie” Johnson (Area 4)
Johnson, Doyle W. – May 8, 1911 – December 14, 1977 – DS with Irene G. Johnson (Area 2)
Johnson, Elzie – 1929 – 1965 (grave not found in November 2006)
Johnson, Irene G. – June 22, 1911 – August 11, 1994 – DS with Doyle W. Johnson (Area 2)
Johnson, James “JJ” – March 12, 1958 – December 30, 2002 (grave not found in November 2006)
Johnson, Jessie – December 25, 1858 – October 20, 1902 (Area 1)
Johnson, Joetta – January 11, 1913 – April 19, 2000 (FM) (Area 4)
Johnson, Melissa – October 28, 1967 – May 11, 1969 (Area 2)
Johnson, Ralph Donald – August 6, 1948 – January 3, 2006 – son of Amos and Hattie Johnson
Johnson, Shirley “Sissie” – April 24, 1938 – only date – DS with Clarence Leo Johnson (Area 4)
Johnson, Wanda Sue – May 23, 1953 – August 18, 2006 (FM) (Area 4)
Johnson, William L. – April 8, 1904 – March 2, 1967 (Area 1)
Johnston, Darcy Dean – August 17, 1956 – December 28, 2003 – TSgt USAF Persian Gulf (Area 4)
Johnston, Shannon Dwain – September 9, 1976 – July 24, 1994 (Area 3)
Johnston, Wallace N. – 1897 – 1983 – Pfc. U.S. Army WWI & WWII (Area 4)
Jones, Carrol H. – September 8, 1932 – July 30, 1983 – DS with E. Gayle Jones (Area 2)
Jones, E. Gayle – August 16, 1937 – August 4, 2004 – DS with Carroll H. Jones (Area 2)
Jones, Ella Pearl – May 15, 1928 – July 23, 2006 (FM) (Area 2)
Jones, G.T. – September 9, 1888 – April 21, 1968 – DS with Lizzie Jones (Area 2)
Jones, Horace L. – January 15, 1919 – January 5, 1968 – Cpl. 163rd Fld Arty Bn WWII (Area 2)
Jones, Joyce Ella Johnson – December 18, 1945 – March 15, 2003 (Area 4)
Jones, Lizzie – July 14, 1885 – August 11, 1987 – DS with G.T. Jones (Area 2)
Jones, Lottie Ellen – April 15, 1894 – October 5, 1946 (grave not found in November 2006)
Jones, Nellie – May 1, 1900 – April 2, 1986 – DS with William L. Jones (Area 5)
Jones, Richard L. – August 16, 1946 – August 27, 1966 (Area 1)
Jones, Robert E. Jr. – April 1, 1960 – only date – son of Robert and Doris Jones (Area 5)
Jones, William L. – April 18, 1882 – June 5, 1959 (Area 5)
Joyner, A. Louise Holmes – December 28, 1924 – only date – DS with William Roy Joyner (Area 3)
Joyner, Geogie Ann – 1875 – 1947 – DS with Lewis E. Joyner (Area 2)
Joyner, James C. – July 7 1899 – April 6, 1963 (Area 2)
Joyner, L. E. – January 29, 1915 – February 1, 1966 – Cpl. Army Air Forces WWII (Area 2)
Joyner, Lewis E. – 1874 – 1948 – DS with Georgie Ann Joyner (Area 2)
Joyner, M. Gertrude – August 15, 1898 – only date – wife of W. Shelby Joyner (Area 3)
Joyner, Sarah Elizabeth – 1824 – 1916 (Area 2)
Joyner, Shirley Vincent – November 29, 1949 – only date – DS with William Franklin Joyner (Area 3)
Joyner, Tennie E. – April 6, 1903 – December 9, 1983 (Area 2)
Joyner, Thomas – April ?, 1901 – September ?, 1956 (Area 2)
Joyner, W. Shelby – December 14, 1896 – June 11, 1960 – husband of M. Gertrude Joyner (Area 3)

Joyner, William Franklin – October 7, 1947 – August 6, 1998 – DS with Shirley Vincent Joyner (Area 3)
Joyner, William Roy – July 24, 1921 – only date – DS with A. Louise Holmes Joyner (Area 3)

Jumpers, Richard L. – August 16, 1946 – August 27, 1966 (grave not found in November 2006)
Key, Billie N. – February 11, 1928 – June 21, 2005 – DS with G. Floyd Key (Area 3)
Key, G. Floyd – August 1, 1929 – June 13, 1982 (Area 3)
Killough, Annie – March 4, 1899 – October 20, 1994 – DS with Monroe W. Killough (Area 1)
Killough, Monroe W. – November 23, 1893 – March 14, 1972 – Pfc. U.S. Army WWI (Area 1)
Kilman, Charles L. “Chuck” – April 14, 1958 – October 3, 1974 (Area 2)
Kilman, Morris Gene – June 6, 1931 – December 19, 1987 – U.S. Navy Korea – DS with Theola C. Kilman (Area 2)
Kilman, Theola C. – May 9, 1932 – only date – DS with Morris Gene Kilman (Area 2)
Kirby, James Otho – February 1, 1882 – July 12, 1961 (Area 1)
Kirby, Jewell Irene – July 18, 1888 – January 3, 1968 (Area 1)
Kirby, Tennessee M. – March 14, 1858 – January 3, 1931 – DS with William W. Kirby (Area 1)
Kirby, William W. – October 27, 1845 – April 19, 1885 – DS with Tennessee M. Kirby (Area 1)
Kirby, Zadie Ethel – 1897 – 1916 (Area 2)
Kirk, William Eugene – January 15, 1924 – July 16, 1997 (Area 2)
Kirkendall, Ethel – February 12, 1909 – Only date (Area 2)
Knapp, Robert – November 14, 1911 – February 10, 1980 (Area 5)
Knapp, William R. – May 17, 1936 – October 6, 2004 (Area 5)
Komatsu, Ernest I. – August 19, 1919 – February 4, 1996 – Pvt. U.S. Army WWII (Area 2)
Komatsu, Lottie E. – September 6, 1919 – June 29, 1977 (Area 2)
Kramarz, Frances – March 2, 1914 – August 24, 1994 – DS with William Kramarz (Area 3)
Kramarz, William – May 17, 1929 – April 16, 2000 – DS with Frances Kramarz (Area 3)
Laferney, Billye Jean – October 22, 1936 – December 1 2004 – DS with Charles L. Laferney (Area 3)
Laferney, Charles L. – December 18, 1933 – only date – DS with Billye Jean Laferney (Area 3)
Laferney, Louis – October 10, 1900 – September 12, 1971 – DS with Viola Laferney (Area 3)
Laferney, Viola – January 30, 1902 – April 8, 1982 – DS with Louis Laferney (Area 3)
Lambert, Linda Wahl – July 18, 1951 – February 19, 1990 (Area 1)
Lane, Elizabeth – February 22, 1798 – December 12, 1867 (Area 1)
Lane, Fred D. – June 28, 1885 – August 16, 1972 (Area 4)
Lang, Emmert C. – December 28, 1894 – December 29, 1972 - DS with Lillie Ann Lang (Area 2)
Lang, Lillie Ann – October 1, 1904 – July 14, 2001 – DS with Emmett C. Lang (Area 2)
Langford, Annie M – May 10, 1907 – September 25, 2004 (Area 2)
Langford, Billy D. – March 17, 1939 – September 24, 1960 (Area 5)
Langford, Edwin R. – November 2, 1915 – February 27, 2003 – DS with Lena Viola Langford (Area 5)
Langford, Henry – June 5, 1937 – August 11, 1937 (Area 2)
Langford, James W. – March 24, 1893 – November 12, 1971 – Pvt. Co B 113th Inf WWI (Area 2)
Langford, Lena Viola – October 11, 1918 – January 24, 2001 – DS with Edwin F. Langford (Area 5)
Latimer, Bernice May – 1909 – 1934 (Area 5)
Latimer, Denver – December 23, 1917 – July 11, 1928 (Area 5)

Latimer, Eric J. – December 20, 1914 – February 13, 1980 (Area 5)
Latimer, Martha L. – February 1, 1921 – January 4, 1987 – DS with R.C. “Sonny” Latimer (Area 5)
Latimer, O. Wilbur – October 3, 1911 – October 5, 1995 – TS with Wilbur Dale & Winnifred D. Latimer (Area 3)
Latimer, R. May – June 28, 1885 – July 16, 1964 – DS with W. Bradford Latimer (Area 5)
Latimer, R.C. "Sonny" – May 19, 1919 – November 13, 1989 – DS with Martha L. Latimer (Area 5)

Latimer, Rufus M. – 1885 – 1972 – DS with Tide Frances Latimer (Area 5)
Latimer, Tide Frances – 1889 – 1967 – DS with Rufus M. Latimer (Area 5)
Latimer, W. Bradford – December 24, 1879 – June 30, 1973 – DS with R. May Latimer (Area 5)
Latimer, Wilbur Dale – May 23, 1944 – January 19, 1971 – Cptn., Trp C, 17 Cav., 101st Abn Div – TS with O. Wilber and Winnifred D. Latimer (Area 3)
Latimer, Winnifred D. – March 28, 1911 – April 21, 1997 – TS with O. Wilber and Wilbur Dale Latimer (Area 3)

Lawrence, Fred E. – September 13, 1912 – July 2, 1973 – DS with Ila R. Lawrence (Area 3)
Lawrence, Ila R. – July 15, 1916 – February 23, 1988 – DS with Fred E. Lawrence (Area 3)
Lawson, Lois Hynds – February 28, 1925 – only date – DS with Milton B. Lawson (Area 5)
Lawson, Milton B. – March 20, 1918 – February 3, 1986 – DS with Lois Hynds Lawson (Area 5)
Layrock, Amon B. – October 4, 1911 – June 3, 1974 – DS with Edna J. Layrock (Area 3)
Layrock, Edna J. – September 22, 1916 – July 18, 1988 – DS with Amon B. Layrock (Area 3)
Layrock, Haynes Keith – July 4 1937 – only date – DS with Mary Bell – Layrock (Area 3)
Layrock, Mary Bell – May 29, 1938 – only date – DS with Haynes Keith Layrock (Area 3)
Leach, Charles A. – February 25, 1898 – December 16, 1967 – DS with Cilla B. Leach (Area 5)
Leach, Cilla B. – March 13, 1904 – January 5, 1988 (Area 5)
Lee, Beatrice S. – September 19, 1897 – November 27, 1939 (Area 2)
Lee, Robert E. – February 11, 1900 – January 21, 1958 (Area 2)
Leggett, Thomas – December 12, 1832 – February 3, 1870 (grave not found in November 2006)
Lenderman, Ella Brown – June 17, 1880 – February 2, 1971 (Area 2)
Lendermon, J.T. – died December 1953 – only date (death notice in *Daily Citizen*) (grave not found in November 2006)
Lewis, Annette A. – May 5, 1941 – only date – DS with Jack D. Lewis Sr. (Area 2)
Lewis, Bivin A. “Bill” – January 4, 1908 – January 1, 1983 – DS with Maxine Helms Lewis (Area 2)
Lewis, Emily R. – January 8, 1894 – March 9, 1985 – DS with Frank L. Lewis (Area 2)
Lewis, Etha Evelyn – March 22, 1911 – Only date – DS with Henry Crite Lewis (Area 3)
Lewis, Frank L. – August 24, 1880 – December 2, 1964 (Area 2)
Lewis, Henry Crite – July 1, 1909 – October 20, 1982 – DS with Etha Evelyn Lewis (Area 3)
Lewis, Jack D. Sr. – May 3, 1930 – May 14, 2005 – DS with Annette A. Lewis (Area 2)
Lewis, Maxine Helms – February 24, 1910 – September 30, 1984 (Area 2)
Lewis, W. M. – July 12, 1875 – only date (Area 1)
Light, Arvel A. – April 28, 1909 – December 13, 1976 – DS with Georgia A. Light (Area 2)
Light, Carthel L. – April 11, 1920 – October 31, 1983 – S/Sgt. U.S. Army WWII – DS with Myrtle W. Light (Area 2)
Light, Charles – July 3, 1908 – July 9, 1992 (grave not found in November 2006)
Light, Georgia A. – February 17, 1905 – September 3, 1996 – DS with Arvel A. Light (Area 2)
Light, Myrtle W. – March 19, 1933 – April 29, 1996 (Area 2)

Light, Sarah Jane – December 15, 1892 – June 22, 1930 (Area 2)
Liles, Bessie – February 10, 1892 – March 19, 1895 – DS with Ruby M. Liles (grave not found in November 2006)
Liles, Murray H. – December 14, 1916 – October 16, 1973 – Pfc. U.S. Army WWII (Area 2)
Liles, Ruby M. – May 16, 1868 – July 1, 1902 – DS with Bessie Liles (grave not found in November 2006)
Love, Elvie I. – May 15 1907 – January 1, 1975 – DS with Pauline F. Love (Area 2)
Love, Pauline F. – October 26, 1910 – February 27, 1967 – DS with Elvie I. Love (Area 2)
Lyell, C. R. Dr. – April 13, 1871 – October 27, 1918 (Area 2)
Lyons, Christiana – August 12, 1880 – March 24, 1963 (Area 4)
Lyons, James Everett – October 31, 1931 – October 12, 1964 (Area 2)
Lyons, Mary A. – May 23, 1915 – May 27, 1994 – DS with Thomas A. Lyons (Area 4)
Lyons, Thomas A. – August 21, 1907 – November 20, 1990 – DS with Mary A. Lyons
M.L.S. – no dates – initials on small stone (grave not found in November 2006)
Magee, Beatrice A. – January 30, 1907 – November 24, 1993 – DS with Robbie J. Magee (Area 3)
Magee, Bell Phelps – July 26, 1865 – December 20, 1944 – DS with Robert L. Magee (grave not found in November 2006)
Magee, Elbert L. “Ted” – October 14, 1912 – November 7, 1984 (Area 2)
Magee, Joe M. – October 14, 1908 – September 30, 1945 (Area 2)
Magee, John E. – August 4, 1904 – September 20, 1993 – DS with Ruth M. Magee (Area 5)
Magee, Pamela Sue – October 9, 1959 – Infant – DS with Robert Glenn Magee (Area 3)
Magee, Robbie J. – March 4, 1899 – October 15, 1980 – DS with Beatrice A. Magee (Area 3)
Magee, Robert Glenn – April 4, 1956 – infant – DS with Pamela C. Magee (Area 3)
Magee, Robert L. – July 16, 1868 – October 30, 1934 – DS with Bell Phelps Magee (grave not found in November 2006)
Magee, Ruth M. – September 20, 1911 – March 11, 1995 – DS with John E. Magee (Area 5)
Malone, Gladys – November 19, 1918 – August 2, 1972 – DS with William E. Malone (Area 2)
Malone, Ruth – April 7, 1917 – March 4, 1982 (Area 2)
Malone, William E. – May 16, 1915 – May 23, 1990 – DS with Gladys Malone (Area 2)
Manes, Charles – February 21, 1903 – March 21, 1969 (Area 2)
Manes, Helen – October 17, 1911 – April 2, 1995 (Area 2)
Manes, Leslie – January 28, 1881 – July 29, 1928 (Area 2)
Manes, Myrtle May – May 12, 1888 – May 17, 1955 (Area 2)
Manning, Richard Stephen – born and died October 12, 1966 (grave not found in November 2006)
Marsh, A. H. – August 26, 1892 – April 8, 1961 (Area 3)
Martin, Billy Gene – September 21, 1933 – October 27, 1959 (Area 2)
Martin, Jessie Jones – February 6, 1901 – October 9, 1997 - DS with Authur P. “Artie” Russell (Area 2)
Martin, Rosie I. – March 16, 1911 – May 2, 1962 – DS with William A. Martin (Area 2)
Martin, William A. – May 15, 1886 – September 22, 1963 – DS with Rosie I. Martin (Area 2)
Mason, Adaline R. – 1871 – 1948 – DS with Robert J. Mason (Area 2)
Mason, Charles J. – March 10, 1899 – August 12, 1978 – DS with Maggie B. Mason (Area 2)
Mason, Johnny Lee – October 16, 1947 – December 11, 1995 (FM) (grave not found in November 2006)
Mason, Maggie B. – October 16, 1902 – January 20, 1976 (Area 2)

Mason, Obena – died December 6, 1956 – age 53 years (*Daily Citizen Colored news*) (grave not found in November 2006)

Mason, Robert J. – 1871 – 1950 (Area 2)

Matheney, Charlie Luther – May 27, 1916 – August 25, 1987 – DS with Hazel Angel Matheney (Area 2)

Matheney, Hazel Angel – February 1, 1919 – September 17, 1989 – DS with Charlie Luther Matheney (Area 2)

Mathis, Thomas F. Sr. – June 25, 1929 – February 4, 1993 – U.S. Air Force – DS with Velma Ruth Mathis (Area 2)

Mathis, Velma Ruth – April 19, 1931 – May 23, 1989 – DS with Thomas F. Mathis Sr (Area 2)

Maurer, Clara Beth – May 2, 1958 – only date – DS with George Wayne Maurer (Area 2)

Maurer, George Wayne – December 28, 1954 – December 22, 2001 – DS with Clara Beth Maurer (Area 2)

McAbee, Minnie V. – May 23, 1909 – April 12, 1976 – DS with William B. McAbee (Area 3)

McAbee, William B. – February 25, 1908 – February 10, 1976 – DS with Minnie V. McAbee (Area 3)

McAlister Elmer B. – January 6, 1931 – only date – infant (Area 2)

McAlister, Barbara Susan – October 4, 1953 – May 13, 1962 (Area 2)

McAlister, Melvin – July 4, 1933 – only date – infant (Area 2)

McAlister, Nellie – January 6, 1897 – February 8, 1986 – DS with William T. McAlister (Area 2)

McAlister, William T. – January 3, 1887 – October 5, 1968 – DS with Nellie McAlister (Area 2)

McCall, Ruth N. – December 6, 1900 – February 27, 1959 (Area 2)

McCall, W. J. – June 21, 1895 – October 19, 1962 (Area 2)

McCollum, Alvin E. – June 7, 1914 – June 18, 1996 – DS with Leta B. McCollum (Area 1)

McCollum, Leta B. – July 26, 1918 – December 6, 2000 – DS with Alvin E. McCollum (Area 1)

McCoy, Alvy W. – 1919 – 1977 – Pfc. U.S. Army WWII (Area 2)

McCoy, Andy – March 10, 1918 – April 23, 1948 (Area 2)

McCoy, Anna – 1930 – 1973 (Area 2)

McCoy, Elmer – 1910 – 1920 (Area 2)

McCoy, Florence – February 18, 1893 – December 15, 1931 (Area 2)

McCoy, Ida – February 2, 1890 – July 15, 1973 – DS with Roy McCoy (Area 2)

McCoy, Leota – 1916 – 1922 (Area 2)

McCoy, Roy – September 10, 1887 – November 15, 1941 – DS with Ida McCoy (Area 2)

McCoy, Sally – October 20, 1866 – December 12, 1940 (Area 2)

McCoy, Vernon Lee – September 13, 1926 – November 15, 1998 – S1 U.S. Navy WW II (Area 2)

McCoy, William – 1889 – 1949 (Area 2)

McFarlin, Johnnie B. Hodges – May 10, 1946 – only date – DS with Willa D. Hodges Hemingway (Sister) (Area 3)

McGinnis, Infant – no dates – child of E. McGinnis (Area 1)

McNeil, Sylvester Jr. – August 12, 1937 – October 24, 2000 (Area 4)

McPherson, Charlie – 1843 – 1905 (Area 2)

McPherson, Mary K. – 1846 – 1908 (Area 2)

Mears, Etta B. – January 25, 1899 – April 6, 1971 – DS with Simpson Mears (Area 2)

Mears, Grace – March 21, 1907 – April 6, 1982 – DS with Loyd Earney Mears (Area 2)

Mears, Harvey E. – July 15, 1929 – April 8, 1971 (grave not found in November 2006)

Mears, Loyd Earney – March 2, 1895 – January 2, 1957 – Pvt. Co C 4th Bn U.S. Guards WWI (Area 2)

Mears, Simpson – January 11, 1889 – March 16, 1948 – Pvt. 153rd Inf 39th Div WWI (Area 2)

Melton, Adam C. – July 31, 1919 – September 7, 1996 – Sgt U.S. Army WWII – DS with Juanita G. Melton (Area 2)

Melton, Annie S. – November 10, 1899 – June 26 1993 – DS with E. C. Melton (Area 2)

Melton, E. C. – October 30, 1896 – August 4 1984 – DS with Annie S. Melton (Area 2)

Melton, E. E. – July 19, 1859 – November 8, 1936 (Area 2)

Melton, Jerry – January 23, 1900 – February 17, 1919 (Area 2)

Melton, Juanita G. – August 29, 1920 – January 7, 2005 – DS with Adam C. Melton (Area 2)

Melton, Perlene – October 8, 1917 – October 29, 1918 – Area 2)

Melton, William B. – May 16, 1865 – December 4, 1941 (Area 2)

Merritt, Billie Lee – November 25, 1932 – September 10, 1934 (Area 2)

Merritt, Edith Rose – September 25, 1903 – April 10, 1997 (Area 2)

Merritt, Edna Johnson – February 26, 1883 – November 12, 1944 (Area 2)

Merritt, Franklin Pierce – October 18, 1885 – February 10, 1970 (Area 2)

Merritt, Inez E. – January 7, 1915 – October 10, 1999 – DS with Taylor W. Merritt (Area 3)

Merritt, John L. – 1912 – 1976 – DS with Lorene Merritt (Area 5)

Merritt, Lewis M. – July 24, 1903 – May 7, 1987 (Area 2)

Merritt, Lorene – 1913 – 1987 – DS with John L. Merritt (Area 5)

Merritt, Mary P. – July 19, 1927 – March 4, 1987 – DS with Milton H. Merritt (Grave not found in November 2006)

Merritt, Milton H. – May 4, 1883 – February 14, 1922 (Area 2)

Merritt, Milton H. – November 19, 1919 – August 6, 1983 – DS with Mary P. Merritt (Grave not found in November 2006)

Merritt, Taylor W. – January 21, 1911 – November 16, 1970 – DS with Inez E. Merritt (Area 2)

Merritt, William L. – October 11, 1904 – June 29, 1975 – DS with Winnie A. Merritt (Area 2)

Merritt, Winnie A. – July 31, 1909 – January 13, 1986 – DS with William L. Merritt (Area 2)

Miller, Alma A. – November 20, 1896 – January 13, 1994 – DS with L. Urbin Miller (Area 3)

Miller, James R. – June 15, 1931 – December 12, 1997 – DS with Nannie L. Miller (Area 3)

Miller, Kelly Dean – June 13, 1959 – only date – infant (Area 3)

Miller, L. Urbin – November 17, 1894 – August 5, 1987 – DS with Alma A. Miller (Area 3)

Miller, Nannie L. – June 28, 1934 – only date – DS with James R. Miller (Area 3)

Miller, Roxy E. – January 10, 1897 – May 30, 1986 (Area 3)

Mills, James Anderson – 1852 – 1935 – DS with Martha Ann Mills (Area 1)

Mills, Martha Ann – January 10, 1855 – May 28, 1910 – DS with James Anderson Mills (Area 1)

Minyard, Glendle – February 3, 1938 – Only date – DS with Sharon P. Minyard (Area 2)

Minyard, James O. Sr. – April 5, 1891 – May 17, 1978 – DS with Mary E. Minyard (Area 2)

Minyard, James Oscar Jr. – August 25, 1924 – November 6, 1952 – Sgt Brty C 39th Fld Arty Bn WWII (Area 2)

Minyard, Mabel Ida – August 17, 1916 – September 17, 1945 (Area 2)

Minyard, Mary E. – September 28, 1894 – February 8, 1980 – DS with James O. Minyard Sr. (Area 2)

Minyard, Ray – August 2, 1935 – January 6, 1971 (Area 2)

Minyard, Sharon P. – November 24, 1941 – October 22, 1997 – DS with Glendle Minyard (Area 2)

Minyard, Timothy Ray – September 1, 1960 – February 3, 1966 (Area 2)
Mondy, Ryan Christopher – August 6, 2000 – March 23, 2008
Moore, Charlie E. – February 7, 1910 – June 21, 1995 – DS with Ethel Mae Moore (Area 1)
Moore, David Darold – November 7, 1932 – March 26, 1978 (Area 1)
Moore, Ethel Mae – February 18, 1903 – December 29, 1998 – DS with Charlie E. Moore (Area 1)
Moore, M. Charley – October 27, 1866 – March 12, 1922 – DS with Mary E. Moore (Area 2)
Moore, Mary E. – September 14, 1886 – February 5, 1981 – DS with M. Charley (Area 2)
Morgan, Garda – 1885 – 1958 – DS with Grace Morgan (Area 2)
Morgan, Grace – 1892 – only date – DS with Garda Morgan (Area 2)
Morgan, Haley – March 11, 1921 – only date – S2 CI U.S. Navy (Area 2)
Morris, Bradley R. Jr. – April 6, 1923 – July 12, 1925 (Area 1)
Morris, Dudley – August 17, 1890 – January 20, 1962 – DS with Grace Morris (Area 2)
Morris, Eura – August 22, 1877 – December 27, 1899 (Area 1)
Morris, G. W. – February 14, 1864 – December 26, 1953 – DS with Laura Morris (Area 1)
Morris, George Lewis – August 20, 1840 – May 3, 1917 – DS with Sarah Elizabeth Morris (Area 1)
Morris, Grace – September 2, 1891 – August 3, 1971 (Area 2)
Morris, J. Henry – June 18, 1867 – September 3, 1877 – don of M.M. and M.J. Morris (Area 1)
Morris, Ida S. – January 16, 1876 – October 21, 1881 – daughter of M.L. & S.A. Morris (Area 1)
Morris, Jewell – October 4, 1889 – August 22, 1900 (Area 1)
Morris, John W. – December 22, 1886 – February 8, 1892 (Area 1)
Morris, Laura – July 12, 1871 – July 9, 1936 – DS with G.W. Morris (Area 1)
Morris, M.J. – March 17, 1883 – April 28, 1885 – Son of M.M. Morris (Area 1)
Morris, Mary E. – January 30, 1872 – February 17, 1872 – Daughter of G.L. and S.E. Morris (Area 1)
Morris, Matterson Monroe – February 17, 1870 – November 12, 1898 – son of G.L. and S.E. Morris (Area 1)
Morris, Minnie A. – October 30, 1880 – December 23, 1889 (Area 1)
Morris, Nettie – 1892 – 1928 (Area 5)
Morris, S. A. – June 22, 1806 – December 31, 1895 – mother of M.M, T.J. and C.L. Morris (Area 1)
Morris, Sarah Elizabeth – October 6, 1851 – October 29, 1941 – DS with George Lewis Morris (Area 1)
Morris, Spencer B. – February 22, 1860 – May 16, 1936 – DS with Virginia M. Morris (Area 1)
Morris, Thomas E. – July 20, 1911 – May 30, 1974 (Area 1)
Morris, Thomas – June 8, 1894 – November 20, 1896 (Area 1)
Morris, Virginia M. – July 26, 1867 – June 28, 1954 – DS with Spencer B. Morris (Area 1)
Morris, W.C. – April 5, 1858 – February 8, 1892 – son of M.M. and M.J. Morris (Area 1)
Morrow, Bonnie R. – December 1, 1924 – July 17, 1998 – DS with William H. “Bill” Morrow (Area 3)
Morrow, William H. “Bill” – February 16, 1920 – January 4, 1997 – U.S. Army WWII – DS with Bonnie R. Morrow (Area 3)
Mowrer, Helen Jane – March 9, 1935 – only date (Area 3)
Mowrer, John French – March 7, 1933 – October 8, 1990 (Area 3)
Moye, G. Leon – March 12, 1923 – only date – DS with Opal M. Moye (Area 2)
Moye, Opal McAlister – February 4, 1924 – April 6, 2008 – DS with G. Leon Moye (Area 2)
Moye, Scott D. – March 26, 1957 – May 23, 1957 (Area 2)

Mullins, Mary M. – February 14, 1873 – June 5, 1945 (Area 2)
Murray, Elijah A. – March 10, 1887 – December 5, 18?? (Area 1)
Murray, Landon Roger – January 7, 1984 – January 18, 1984 – son of Lambert and McKay Murray (Area 4)
Murray, Mary Ann – May 31, 1859 – December 27, 1872 – daughter of Elijah Murray (Area 1)
Myers, Jerry – January 2, 1881 – July 7, 1974 (Area 4)
Myers, Jerry Wesley – died December 12, 1957 – age 76 years (unmarked grave) (from published obituary)
Myrick, Billy G. – November 26, 1929 – July 10, 1954 – A1C Air Police SQ U.S. Air Force (Area 2)
Myrick, Eugene W. – July 9, 1905 – July 7, 1974 – DS with Lavie Mae Myrick (Area 2)
Myrick, Lavie Mae – December 24, 1908 – February 26, 1992 – DS with Eugene W. Myrick (Area 2)

Myrick, Marion L. – October 5, 1933 – September 22, 1992 – DS with Nelda M. Myrick (Area 2)
Myrick, Nelda M. – September 11, 1931 – only date – DS with Marion L. Myrick (Area 2)
Nalley, Herbert F. – 1907 – 1980 – Pvt. U.S. Army WWII (Area 2)
Nalley, Mildred A. – February 20, 1900 – August 28, 1997 (Area 2)
Nance, Edgar Lloyd – November 1, 1918 – November 2, 1918 (Area 1)
Neal, Elmer L. – April 9, 1921 – March 17, 1986 – DS with Velma May Neal (Area 2)
Neal, Eva Lee – May 22, 1926 – January 30, 2008 (Area 2)
Neal, Girvle G. – September 21 1923 – June 13, 1998 (Area 2)
Neal, Harriet Spencer – August 16, 1816 – May 1, 1852 – wife of Rev. Meredith H. Neal (Area 1)
Neal, James M. – August 15, 1815 – November 15, 1852 (Area 1)
Neal, Lorene – June 30, 1918 – April 5, 2005 – DS with Oliver Neal (Area 3)
Neal, Oliver – October 10, 1914 – September 9, 1989 – DS with Lorene Neal (Area 3)
Neal, Velma May – May 29, 1921 – June 7, 2005 – DS with Elmer L. Neal (Area 2)
Neaville, Capt. John C. – No dates – Co. K, 8th Arkansas Inf C.S.A (Area 1)
Neaville, Elmer B. Sr. – October 7, 1888 – June 19, 1973 (grave not found in November 2006)
Neaville, James A. – April 2, 1826 – May 10, 1909 (Area 1)
Neaville, James A. – August 9, 1876 – November 28, 1964 – DS with Mabel Annie Neaville (Area 3)
Neaville, James A.III – December 17, 1939 – July 31, 1995 – DS with Laura R. Neaville (Area 3)
Neaville, James Albert Jr. – September 27, 1910 – May 8, 1990 – DS with Mary Dell Eans Neaville (Area 3)
Neaville, John B. – 1905 – 1996 – DS with Lucille A. Neaville (Area 3)
Neaville, John E. – January 21, 1856 – December 24, 1899 (Area 1)
Neaville, Laura R. – June 28, 1941 – only date – DS with James A. Neaville III (Area 3)
Neaville, Lucille A. – 1908 – 1985 (Area 3)
Neaville, Mabel Annie – July 14, 1882 – August 19, 1957 – DS with James A. Neaville (Area 3)
Neaville, Margaret Mary – May 15, 1888 – April 10, 1956 (grave not found in November 2006)
Neaville, Marie F. – May 1, 1870 – June 2, 1871 – daughter of J.C. and M.A. Neaville (Area 1)
Neaville, Mary Dell Eans – July 3, 1912 – January 27, 1997 (Area 3)
Neaville, Paul – July 15, 1896 – August 5, 1955 (Area 1)
Neaville, William B. – November 4, 1857 – July 26, 1917 (Area 1)
Neaville, Willie E. – May 28, 1860 – April 7, 1934 – wife of W.B. Neaville (Area 1)
Nelson, Harry Dale – July 25, 1935 – June 1, 1993 (Area 2)
Newton, Carolyn J. – 1904 – 2003 (Area 2)
Newton, Oscar R – 1903 – 1952 (Area 2)

Nicholson, Lillian – February 3, 1911 – only date – DS with Roy Nicholson (Area 3)
Nicholson, Roy – February 9, 1902 – May 10, 1978 – DS with Lillian Nicholson (Area 3)
Nole, Mollie McRoy – May 17, 1968 – May 18, 1968 (grave not found in November 2006)
Norwood, James N. – May 1, 1846 – November 5, 1917 – husband of Joicie E. – TS with Joicie E. and Willie Addie Norwood (Area 1)
Norwood, Joicie E. – December 18, 1842 – August 21, 1899 – wife of James N. – TS with Joicie E. and James N. Norwood (Area 1)
Norwood, Willie Addie – May 31, 1882 – December 7, 1904 – daughter of James N. – TS with James N. and Joicie E. Norwood (Area 1)
Nunn, James T. Sr. – 1901 – 1977 (Area 5)
Nunn, Myrtle – 1894 – 1962 (Area 5)
O'Donnell, Emilie – March 19, 1886 – April 10, 1949 (grave not found in November 2006)
Odell, Lottie A. – August 25, 1869 – March 4, 1909 (Area 1)
O'Donnell, Eva – August 19, 1881 – February 22, 1979 (Area 2)
O'Donnell, Willie – March 19, 1886 – April 10, 1949 (Area 2)
Oliver, Adda Immel – August 4, 1910 – May 4, 2004 – DS with Wilbur Oliver (area 2)
Oliver, Allan – August 24, 1911 – June 30, 1946 (Area 2)
Oliver, Blanch Holt – December 11, 1877 – June 5, 1937 – DS with W. H. Oliver (Area 2)
Oliver, Carl Clark – January 17, 1904 – July 19, 1990 – DS with Mattie Mae Oliver (Area 2)
Oliver, Earl L. – May 12, 1879 – February 3, 1974 – DS with Vera Oliver (Area 2)
Oliver, Elizabeth Jane – August 23, 1925 – January 11, 1931 (Area 2)
Oliver, Etta L. – December 13, 1858 – March 16, 1949 (grave not found in November 2006)
Oliver, Infant – born and died February 26, 1932 – son of Allan and Barbara Oliver (Area 2)
Oliver, Jennie Talkington – August 20, 1867 – June 20, 1929 (Area 2)
Oliver, Lela B. – November 11, 1899 – September 12, 1969 – DS with Weldon Oliver (Area 2)
Oliver, Mary A. – March 28 1844 – March 12, 1926 – DS with Tilman Jefferson Oliver (Area 2)
Oliver, Mattie Mae – July 2, 1904 – January 2, 1980 – DS with Carl Clark Oliver (Area 2)
Oliver, Raymond – 1912 – 1977 – TSgt U.S. Air Force WWII (grave not found in November 2006)
Oliver, Robert Earl – May 22, 1938 – May 16, 1940 (Area 2)
Oliver, Roland C. – July 21, 1866 – July 6 1934 (Area 2)
Oliver, Roland Clyde – February 17, 1935 – September 13, 1992 – Sgt. U.S. Army (Area 2)
Oliver, Roy W. – December 16, 1892 – December 8, 1931 – Pvt. 110th Inf 28th Div WWI (Area 2)
Oliver, Susan Ellen – January 18, 1918 – May 29, 1984 (Area 2)
Oliver, Tilman Jefferson – April 6, 1833 – November 16, 1911 – DS with Mary A. Oliver (Area 2)
Oliver, Vera C. – April 29, 1879 – August 1, 1958 – DS with Earl L. Oliver (Area 2)
Oliver, W. H. – August 20, 1874 – July 21, 1952 – DS with Blanch Holt Oliver (Area 2)
Oliver, Weldon L. – June 7, 1900 – November 30, 1972 – DS with Lele B. Oliver (Area 2)
Oliver, Wilbur L. – October 29, 1902 – August 8, 1971 – DS with Adda Immel Oliver (Area 2)
O'Neal, Lori – July 18, 1972 – November 25, 2002 – wife of Sam O'Neal (grave not found in November 2006)
Owen, Cloris – 1918 – only date – infant (Area 5)
Owen, Emily Gray – July 19, 1896 – January 31, 1946 (grave not found in November 2006)
Owen, Henryetta – December 13, 1858 – March 16, 1949 (Area 5)
Owen, Joe B. – June 3, 1906 – September 29, 1992 – DS with Zelda Owen (Area 2)
Owen, John G. – 1851 – 1940 (Area 5)

Owen, Lucille Oliver – October 4, 1900 – December 20, 1944 (Area 2)
Owen, William Carl – 1883 – 1965 (Area 5)
Owen, Zelda O. – November 8, 1912 – April 7, 1997 – DS with Joe B. Owen (Area 2)
Parrish, Ira C. – September 28, 1913 – June 5, 1991 – DS with Rosa E. Parrish (Area 3)
Parrish, Rosa E. – December 12, 1911 – only date – DS with Ira C. Parrish (Area 3)
Parson, Minnie E. – August 31, 1885 – December 28, 1959 (Area 3)
Patterson, Infant – April 28, 1954 – DS with Patterson infant – son of J. D. and Nancy Patterson (Area 3)
Patterson, Infant – March 18, 1956 – DS with Patterson infant – son of J.D. and Nancy Patterson (Area 3)
Patterson, Dr. J. – April 4, 1892 – May 30, 1960 (Area 3)
Patterson, Mary Elizabeth – March 13, 1894 – June 25, 1972 (Area 3)
Patterson, Nancy Roena – March 4, 1923 – May 23, 2004 (Area 3)
Pearce, Opal H. – October 10, 1930 – only date – DS with Orlye Pearce (Area 3)
Pearce, Orlye L. – June 29, 1922 – August 10, 1996 – U.S. Army WWII – DS with Opal H. Pearce (Area 3)
Pemberton, Allen Blake – August 16, 1952 – December 15, 1970 (Area 2)
Pemberton, Henry Allen Jr. – December 18, 1928 – December 24, 2003 – DS with Wanda Jean Pemberton (Area 2)
Pemberton, Wanda Jean – July 3, 1932 – only date – DS with Henry Allen Pemberton Jr. (Area 2)
Pendergrass, Clem E. – November 15, 1857 – April 6, 1894 – wife of W.A. Pendergrass (Area 1)
Perry, Fate – died July 3, 1927 – only date – Missouri Sgt. 804th Pioneer 11th Inf. (Area 1)
Person, Cora – November 18 1872 – February 23, 1938 (Area 2)
Person, Dorthy Nell – November 18, 1922 – June 8 1942 (Area 2)
Person, Ellis – March 10, 1868 – October 15, 1943 (Area 2)
Person, P.L. – no dates (grave not found in November 2006)
Person, Ruth – November 18, 1911 – December 22, 1997 – DS with Simon S. Person (Area 2)
Person, Simon S. – September 16, 1911 – January 24, 1959 – DS with Ruth Person (Area 2)
Person, Valentine – January 3, 1872 – August 2, 1955 (Area 2)
Phelps, Elbert W. – August 21, 1878 – August 10, 1904 (Area 2)
Phelps, James F. – January 16, 1874 – September 19, 1904 (Area 2)
Phillips, Belle Chrisp – June 24, 1888 – March 27, 1957 (Area 2)
Phillips, Dorothy J. Jones – August 12, 1929 – only date – DS with Everett E. Phillips (Area 2)
Phillips, Emily Sims – October 17, 1903 – February 16, 2000 – DS with Floyd O. Phillips (Area 1)
Phillips, Ethel B. – August 24, 1900 – May 1, 1978 (Area 2)
Phillips, Everett E. – January 11, 1927 – March 2, 1999 – Sfc U.S. Army WWII – DS with Dorothy J. Jones Phillips (Area 2)
Phillips, Floyd O. – February 5, 1904 – August 16, 1979 – DS with Emily Sims Phillips (Area 1)
Phillips, Floyd – March 2, 1899 – February 28, 1903 – son of J.A. and Tommie (grave not found in November 2006)
Phillips, Galloway – February 26, 1894 – September 10, 1964 (Area 2)
Phillips, Horace Kelse – 1917 – 1975 – U.S. Army WWII (Area 2)
Phillips, James Arthur – died March 24, 1882 – November 22, 1959 (unmarked grave) (from published obituary)
Phillips, Jo Dawn – December 2, 1967 – only date – daughter of Mr. and . Everett Phillips (Area 2)

Phillips, John A. – August 24, 1875 – September 18, 1952 (Area 2)
Phillips, Lorene B. – February 23, 1923 – January 22, 2006 – DS with Sterling C. Phillips (Area 2)
Phillips, Martha – March 21, 1882 – March 3, 1959 (Area 1)
Phillips, Mildred Lurline – May 18, 1908 – May 6, 2003 (FM) (Area 2)
Phillips, Minnie F. – January 21, 1882 – February 9, 1910 (Area 1)
Phillips, Robert C. – June 14, 1944 – January 9, 1945 (grave not found in November 2006)
Phillips, Sterling C. – October 2, 1918 – only date – DS with Lorene B. Phillips (Area 2)
Phillips, Tommie K. – November 11, 1880 – December 9, 1978 (Area 2)
Pilkington, Annie E. – October 30, 1852 – November 9, 1921 – DS with J.F. Pilkington (Area 2)
Pilkington, J. F. – October 9, 1855 – November 18, 1922 – DS with Annie E. Pilkington (Area 2)
Pinegar, James A. – 1913 – 1994 (Area 2)
Pledger, George Arnold – April 13, 1913 – March 28, 1998 – DS with Mildred D. Pledger (Area 2)
Pledger, Mildred D. – June 3, 1913 – September 5, 1995 – DS with George Arnold Pledger (Area 2)
Polk, Abbie Fuller – February 20, 1928 – September 3, 1994 (Area 5)
Powers, Tessie Ora – 1881 – 1965 (Area 1)
Pratt, Bertha – June 2, 1885 – March 30, 1935 (Area 5)
Pratt, Frances G. – July 9, 1913 – January 15, 1965 (Area 5)
Pratt, Helen M. – May 12, 1910 – March 12 1983 (Area 5)
Pratt, Lula S. – February 15, 1884 – April 7, 1963 – DS with Roy A. Pratt (Area 5)
Pratt, Roy A. – October 17, 1879 – February 11, 1936 – DS with Lula S. Pratt (Area 5)
Presley, Larry Joe – August 30, 1947 – September 28, 1966 (Area 3)
Presley, Willie Earl – March 4, 1922 – September 9, 2006 (FM) (Area 3)
Price, Barner Leo – January 29, 1914 – January 15, 1995 – DS with Viola Hynds Price (Area 3)
Price, Charles W. – July 3, 1908 – July 9, 1992 (Area 2)
Price, Frances – March 20, 1914 – January 26, 1997 – DS with Opie Price (Area 4)
Price, Infant – September 1936 – Only date (Area 2)
Price, Opie – August 8, 1910 – April 1, 1991 – DS with Frances Price (Area 4)
Price, Viola Hynds – October 6, 1916 – only date – DS with Barner Leo Price (Area 3)
Priest, Ethel Stewart – July 23, 1901 – August 22, 1989 (Area 1)
Priest, John L. – May 11, 1907 – November 15, 1966 (Area 1)
Pruitt, Emma Jean – July 2, 1921 – only date – DS with John R. Pruitt (Area 3)
Pruitt, Jeanne M. – August 16, 1969 – September 3, 2006 (Area 3)
Pruitt, John Robert – February 28, 1916 – November 22, 2001 – DS with Emma Jean Pruitt (Area 3)
Pryor, Flora – 1878 – 1947 – DS with Spencer Pryor (Area 5)
Pryor, Frank – 1910 – 1924 (Area 5)
Pryor, Spencer – 1878 – 1954 – DS with Flora Pryor (Area 5)
Ragsdale, C. J. – May 15, 1825 – July 4, 1895 (Area 2)
Ragsdale, Henry – July 27, 1816 – November 19, 1877 (Area 1)
Raia, Carl C. Jr. – November 5, 1943 – December 6, 1994 (Area 4)
Ramsey, Bill J. – October 2, 1908 – September 7, 1989 – Pvt. U.S. Army WWII (Area 3)
Ramsey, Nadean – born and died May 1, 1928 – daughter of W.E. and Pattie Ramsey (Area 5)
Ramsey, Pattie P. – July 2, 1891 – January 28, 1970 – DS with W.E. Ramsey (Area 5)
Ramsey, Raymond J. – May 10, 1912 – May 19, 1979 – Tec5 U.S. Army WWII (Area 3)
Ramsey, Virginia H. – August 8, 1924 – only date – DS with W.W. “Woody” Ramsey (Area 2)

Ramsey, W. W. "Woody" – August 3, 1913 – October 1, 1977 – DS with Virginia H. Ramsey (Area 2)

Ramsey, W.E. – January 2, 1886 – June 15, 1977 – DS with Pattie P. Ramsey (Area 5)

Ransom, Ida M. – January 23, 1885 – only date – DS with James W. Ransom (Area 3)

Ransom, James W. – April 6, 1881 – February 14, 1959 – DS with Ida M. Ransom (Area 3)

Rasco, Iler Mae – September 29, 1906 – May 30, 1992 – DS with Jarrett J. Rasco (Area 5)

Rasco, Jarrett J. – June 28, 1913 – March 17, 2005 – DS with Iler Mae Rasco (Area 5)

Rasco, Joe A. – May 13, 1921 – October 15, 2002 – Pfc. U.S. Army Air Corps WWII – DS with Laura Etta Rasco (Area 5)

Rasco, Laura Etta – December 26, 1920 – September 10, 1990 – DS with Joe A. Rasco (Area 5)

Rascoe, Albert S. – October 6, 1868 – January 5, 1929 – TS with Mattie McElduff and Infant Rascoe (Area 5)

Rascoe, Infant Baby – no dates – TS with Albert S. and Mattie McElduff Rascoe (Area 5)

Rascoe, Mattie McElduff – December 22, 1876 – September 23, 1954 – TS with Albert S. & Infant Rascoe (Area 5)

Rascoe, Robert Lee – October 6, 1949 – only date – infant (Area 5)

Ray, Ethan Kyler – died May 20, 2003 – only date – infant of Drew and Kendra Ray (Area 2)

Ray, Kaden Spencer – died May 20, 2003 – May 21, 2003 – infant of Drew and Kendra Ray (Area 2)

Redus, John E. – March 10, 1871 – July 1, 1880 (Area 1)

Rexroad, F. T. – no dates – Sgt. Co. K 52nd PA Inf. (Area 1)

Reynolds, Bennie Lydell – February 22, 1914 – May 14, 1987 (Area 4)

Reynolds, Cleo W. – September 28, 1918 – March 11, 1990 (Area 4)

Reynolds, Louisa M. – August 10, 1881 – January 23, 1928 (Area 2)

Reynolds, William L. – March 27, 1930 – October 12, 1984 – A3C U.S. Air Force Korea (Area 2)

Rice, Robert – 1888 – 1928 (Area 4)

Riffle, Mary O. – 1869 – 1942 (Area 2)

Rigsby, Aaron Jason – May 13, 1986 – October 13, 1986 (area 2)

Rigsby, Donna May – May 31, 1965 – July 11, 1965 (Area 2)

Rigsby, Herman Russell – June 26, 1929 – May 27, 2006 (FM) (Area 2)

Rigsby, Juanita E. – January 20, 1935 – July 28, 2003 – wife of Herman (Area 2)

Rivers, Alice – January 25, 1860 – October 20, 1894 – DS with infant son (Area 1)

Rivers, Infant – May 30, 1891 – June 5, 1891 – son of R.T. and Alice – DS with Alice Rivers (Area 1)

Roach, Lovie May – December 28, 1916 – October 27, 1971 (Area 3)

Roach, Walter Dean – February 28, 1916 – November 6, 2004 (Area 3)

Roberson, Burl A. – September 13, 1925 – January 29, 2001 – DS with Rosalee Roberson (Area 3)

Roberson, Cloteen – January 15, 1917 – July 22, 1929 (Area 2)

Roberson, Katie – May 28, 1891 – October 8, 1967 (Area 2)

Roberson, Rosalee – December 3, 1928 – April 3, 2003 – DS with Burl A. Roberson (Area 3)

Roberson, Vester – December 14, 1888 – February 8, 1962 (Area 2)

Roberts, James Aubrey – April 14, 1918 – December 12 1988 – DS with Vera Roberts (Area 2)

Roberts, Vera – October 20, 1913 – April 5, 2006 – DS with James Aubrey Roberts (Area 2)

Robinson, Benjamin F. – May 6, 1914 – November 23, 2005 – DS with Dorothy Robinson (Area 4)

Robinson, Charles – August 14, 1910 – December 14, 1973 (Area 4)

Robinson, Charles Edward – June 12, 1952 – April 19, 2002 – husband of Gail Robinson (grave not found in November 2006)

Robinson, Dorothy – December 12, 1915 – December 20, 1981 – DS with Benjamin F. Roninson (Area 4)

Robinson, Joe – December 25, 1887 – January 24, 1968 (Area 4)

Robinson, Sarah Ruth – October 6, 1930 – February 19, 2005 – wife of Doug Robinson (not found November 2006)

Robinson, Victoria – December 20, 1891 – October 18, 1973 (Area 4)

Robison, Julia – May 2, 1917 – February 19, 2002 – DS with Juster Robison (Area 4)

Robison, Juster – June 28, 1920 – June 8, 1994 – DS with Julia Robison (Area 4)

Rogers, C.H. – May 19, 1860 – September 30, 1876 – son of Edwin and H.J. Rogers (Area 1)

Rogers, Carrie L. – December 26, 1880 – November 16, 1882 – daughter of E.W. and M.J. Rogers (Area 1)

Rogers, Edwin – November 6, 1822 – January 8, 1896 – DS with H.J. Rogers (Area 1)

Rogers, H.J. – November 12, 1824 – April 29, 1897 – DS with Edwin Rogers (Area 1)

Rogers, Iduma H. – February 14, 1893 – March 2, 1971 – DS with Otho K. Rogers (Area 2)

Rogers, Jennie Fuller – June 13, 1860 – February 10, 1944 (Area 2)

Rogers, Otho K. – November 17, 1883 – November 24, 1938 – DS with Iduma H. Rogers (Area 2)

Rolland, Dr. James – December 12, 1807 – May 3, 1887 (grave not found in November 2006)

Rollins, Earl P. – May 5, 1904 – July 5, 1964 (Area 3)

Rongey, Jessie Faye – May 11, 1926 – May 13, 1982 – DS with Raymond H. Rongey (Area 2)

Rongey, Raymond H. – July 14, 1919 – July 25, 1971 – M/Sgt 96th Fld Maint SQ WWII and Korea (Area 2)

Roscopf, W. C. – October 11, 1834 – April 2, 1891 – born in Coblenz, Prussia (Area 1)

Roscopf, Leslie – June 13, 1869 – March 31, 1979 – son of W.C. and M.A. Roskopf – DS with Martha A. Roskopf (Area 1)

Roscopf, Lillie – August 13, 1864 – September 18, 1864 – daughter of Maria and W.C. Roscoff – DS with Maria Roskopf (Area 1)

Roscopf, Maria – February 15, 1843 – August 14, 1864 – wife of W.C. Roskopf – DS with Lillie Roskopf (Area 1)

Roscopf, Martha – 1835 – 1871 DS with Leslie Roskopf (Area 1)

Rosso, Virginia – 1909 – 1975 (Area 5)

Rouse, Walter Dean – August 5, 1906 – August 12, 1968 – U.S. Navy WWII (Area 2)

Rowden, James Edward – July 6, 1923 – June 25, 1984 – S2 U.S. Navy WWII (Area 2)

Rowden, Rolla Ira – August 6, 1893 – July 3, 1976 – Pvt. U.S. Army WWI – DS with Ruby Oliver Rowden (Area 2)

Rowden, Ruby Oliver – May 24, 1902 – June 3, 1988 – DS with Rolla Ira Rowden (Area 2)

Rowden, Sarah L. – 1860 – 1928 – DS with William B. Rowden (Area 2)

Rowden, William B. – 1859 – 1929 – DS with Sarah L. Rowden (Area 2)

Rowland, Clifford W. – October 21, 1925 – June 26, 1992 – U.S. Air Force – DS with E. Mae Rowland (Area 3)

Rowland, E. Mae – May 22, 1930 – only date – DS with Clifford W. Rowland (Area 3)

Rusher-Spradlin, Arvil – August 23, 1910 – only date – TS with Jessie and Mabel Rusher-Spradlin (Area 2)

Rusher-Spradlin, Jessie – August 28, 1920 – only date – TS with Arvil and Mabel Rusher-Spradlin (Area 2)

Rusher-Spradlin, Mabel – September 6, 1920 – only date – TS with Jessie and Arvil Rusher-Spradlin (Area 2)
Russ, Bessie Smith – December 29, 1912 – February 15, 1976 (Area 2)
Russell, Alice M. – March 29, 1906 – August 16, 1988 – DS with Wylie S. Russell (Area 2)
Russell, Arthur Paul “Mike” – January 8, 1909 – November 9, 1978 – DS with Emma R. Russell (Area 2)
Russell, Authur P. "Artie" – February 21, 1938 – April 15, 1991 – S2 U.S. Navy – DS with Jessie Jones Martin (Area 2)
Russell, Comer G. – October 18, 1914 – September 1, 1994 – DS with Polly M. Russell (Area 2)
Russell, Erma R. – April 18, 1909 – July 14, 1991 – DS with Arthur Paul “Mike” Russell (Area 2)
Russell, Polly M. – June 19, 1919 – March 1, 2007 – DS with Comer G. Russell (Area 2)
Russell, Wylie S. – April 24, 1901 – October 28, 1967 (Area 2)
Sampson, Fannie – 1876 – 1923 (Area 2)
Sampson, Infant – 1898 – only date (Area 2)
Sampson, Infant – 1900 – only date (Area 2)
Sandlin, Evelyn – July 21, 1916 – January 16, 1995 (Area 2)
Sarringar, George F. – January 4, 1909 – February 1, 1955 (Area 2)
Sarringar, Nina M. – March 30, 1906 – January 3, 1968 (Area 2)
Sarringar, Thomas D. – May 29, 1947 – June 6, 1970 – SP/4 U.S. Army Vietnam (Area 2)
Sawina, Wanda Lou Kirk – March 2, 1926 – October 27, 1978 (Area 2)
Sawyer, Anna E. – January 30, 1848 – March 23, 1913 – DS with David C. Sawyer (Area 2)
Sawyer, Blanch – August 15, 1889 – January 23, 1977 – DS with W.H. Sawyer Area 2)
Sawyer, David C. – February 6, 1848 – February 6, 1919 – DS with Anna E. Sawyer (Area 2)
Sawyer, Etta – April 23, 1886 – December 19, 1972 (Area 2)
Sawyer, Monsieur H. – 1892 – March 22, 1931 – Pvt 162nd Depot Brig WWI – DS with Thelia G. Sawyer (Area 2)
Sawyer, Thelia G. – April 18, 1892 – January 12, 1970 (Area 2)
Sawyer, W.H. – May 23, 1879 – June 19, 1959 (Area 2)
Schaefer, Nancy C. – April 5, 1903 – June 7, 2001 – wife of Winifred (Area 2)
Schaefer, William H. – 1900 – 1967 (Area 3)
Scissell, Burley E. – October 27, 1928 – only date – DS with Wanda J. Scissell (Area 4)
Scissell, Wanda J. – October 4, 1936 – April 9, 2001 – DS with Burley E. Scissell (Area 4)
Scott, Edd – July 8, 1883 – February 21, 1967 (Area 2)
Scott, Mary A. – October 9, 1861 – December 20, 1944 – wife of Shaderic Scott (Area 2)
Scott, Shaderic – August 26, 1854 – February 17, 1925 – DS with Mary A. Scott (Area 2)
Scritchfield, Eathel – May 5, 1901 – March 19, 1971 (Area 2)
Scritchfield, Emma L. – 1900 – 1977 – DS with W.C. Scritchfield (Area 2)
Scritchfield, W. C. – 1894 – 1950 – DS with Emma L. Scritchfield (Area 2)
Sells, Mildred Elizabeth Baker – August 31, 1918 – February 5, 1995 (Area 2)
Selvidge, Arwain – December 11, 1931 – only date – DS with Barbara C. Selvidge (Area 3)
Selvidge, Barbara C. – July 31, 1933 – only date – DS with Arwain Selvidge (Area 3)
Selvidge, Jim – 1887 – 1972 – DS with Lula Selvidge (grave not found in November 2006)
Selvidge, Lula – 1890 – 1984 – DS with Jim Selvidge (grave not found in November 2006)
Shadrick, Infant – January 25, 1963 – only date (grave not found in November 2006)
Shannon, Lois – 1926 – 1928 (Area 2)

Shaw, David Lee – August 6, 1949 – December 31, 1966 (grave not found in November 2006)
Shelby, Bobbie Ruth – January 8, 1932 – only date – DS with James “Doc” Shelby (Area 3)
Shelby, James “Doc” – June 4, 1920 – November 23, 1980 – DS with Bobbie Ruth Shelby (Area 3)
Shelton, Gloria Winnifred Stokes – February 18, 1928 – February 1, 1998 – DS with Lewis Somers Stokes (Area 2)
Sherrod, Elizabeth – 1870 – 1942 – TS with Eula Mae and Felix Eldon Sherrod (Area 2)
Sherrod, Eula Mae – 1875 – 1901 – TS with Elizabeth and Felix Eldon Sherrod (Area 2)
Sherrod, Felix Eldon – 1867 – 1945 – TS with Elizabeth and Eula Mae Sherrod (Area 2)
Sherrod, Laura Ann – 1854 – 1928 (Area 1)
Sherrod, Ora E. – December 29, 1879 – June 25, 1896 – daughter of A.T. & Julia Sherrod (Area 1)
Shirley, Alma – July 30, 1913 – September 14, 2001 – wife of W.R. “Jack” Shirley (grave not found in November 2006)
Shute, Harriet Luella – January 20, 1870 – December 25, 1940 – DS with Philander Shute (Area 2)
Shute, Lloyd Keith – September 20, 1907 – November 30, 1921 (Area 2)
Shute, Philander – February 20, 1866 – May 21, 1944 (Area 2)
Shute, Zyoyd Keith – September 20, 1907 – November 30, 1921 (grave not found in November 2006)
Sickles, Betty Louise – April 11, 1939 – February 19, 2003 – wife of Floyd E. Sickles (Area 2)
Sickles, Floyd E. – June 23, 1935 – only date – DS with Betty Louise Sickles (Area 2)
Sidle, James C. Sr. – April 24, 1924 – August 6, 1974 – U.S. Navy WWII – DS with Lola V. (grave not found in November 2006)
Sidle, Lola V. – September 6, 1923 – only date – DS with James C. Sidle Sr. (grave not found in November 2006)
Simpson, Albert Jeffrey – May 20, 1912 – September 28, 1963 – DS with Emily Neaville Simpson (Area 3)
Simpson, Emily Neaville – November 25, 1913 – January 9, 1976 – DS with Albert Jeffrey Simpson (Area 3)
Simpson, Mears – January 1, 1889 – March 16, 1948 (grave not found in November 2006)
Simpson, Todd Alan – October 24, 1968 – June 8, 1997 (Area 3)
Simpson, Velma Hynds – December 10, 1919 – January 25, 1973 (Area 3)
Skaggs, Warnie – February 9, 1894 – January 3, 1973 – Pvt. U.S. Army WWI (Area 2)
Skillern, Ernest P – 1913 – 1962 (Area 2)
Slack, Ray Whitman – October 9, 1900 – August 18, 1994 (grave not found in November 2006)
Slayton, Annie – January 2, 1863 – December 7, 1895 (Area 1)
Slayton, Janie – September 2, 1855 – January 18, 1890 – wife of T.W. Slayton (Area 1)
Sloan, Bess L. – June 14, 1898 – August 3, 1985 (Area 3)
Smalley, James W. – October 28, 1879 – May 31, 1957 (Area 3)
Smalley, Johnny Turner – February 22, 1913 – March 20, 1995 – DS with Minnie L. Smalley (Area 5)
Smalley, Minnie L. – December 31, 1890 – February 5, 1965 – DS with Johnny Turner Smalley (Area 5)
Smith, Addie – 1873 – 1910 – TS with Ed and Mittye Smith (Area 2)
Smith, Avelyn Marsh – March 20, 1915 – September 28, 1986 – DS with Jackie Marie Short Elkins (Area 3)
Smith, B.A. – 1821 – 1905 (Area 2)

Smith, Beede (O'Donald) – December 3, 1895 – January 10, 1952 – married Odus H. Smith in 1921 (Area 2)

Smith, Benton Harold – October 30, 1910 – only date (grave not found in November 2006)

Smith, Bernadine Sherrod – April 6, 1916 – July 9, 2001 – DS with William M. Smith (Area 2)

Smith, Bessie – September 13, 1901 – December 28, 1973 (Area 2)

Smith, Billie J. – July 8, 1892 – November 27, 1918 (Area 2)

Smith, Bonnie Mae Leach – June 24, 1923 – September 18, 2001 – wife of Grant W. Smith (Area 5)

Smith, Breck – No dates (Grave not found in November 2006)

Smith, Brenda D. – December 13, 1956 – October 22, 2004 – (Area 1)

Smith, Charlie H. – December 14, 1895 – December 14, 1952 (Area 2)

Smith, Cora L. – January 30, 1868 – September 14, 1875 (Area 1)

Smith, Daisy Pathenia – February 10, 1888 – February 4, 1967 – DS with Joseph O. Smith (Area 3)

Smith, Ed – 1868 – 1943 – TS with Addie & Mittye Smith (Area 2)

Smith, Elisha W. – September 9, 1857 – December 4, 1920 (Area 2)

Smith, Esther Marsh – November 4, 1913 – May 19, 1999 – DS with Odus Horace Smith (Area 2)

Smith, Eugene E. – October 8, 1900 – December 15, 1983 (Area 2)

Smith, Floyd C. – February 13, 1929 – July 12, 1988 (Area 5)

Smith, Frank J. – November 27, 1920 – November 8, 1985 (Area 2)

Smith, Frank W. – November 7, 1834 – January 17, 1895 – TS with K.E. and Mary L. Smith (Area 1)

Smith, Georgia E. – July 5, 1907 – July 27, 1986 (Area 5)

Smith, Grant – 1919 – 1976 – 2Lt U.S. Army WWII – husband of Bonnie Mae Leach Smith (Area 5)

Smith, Hallie W. – December 13 1899 – August 20, 1976 – DS with Robert L. Smith (Area 3)

Smith, Harlon L. – February 17, 1918 – only date – DS with June E. Smith 9 Area 3)

Smith, Hazel Gowen – October 1, 1906 – May 30, 1978 (Area 2)

Smith, Helen Ruth Jones – October 25, 1922 – March 27, 2004 (Area 2)

Smith, Ida P. – February 15, 1900 – February 21, 1984 (Area 2)

Smith, Infant – no dates – daughter of Mr. and Mrs. R.L. Smith (grave not found in November 2006)

Smith, Infant – November 27, 1888 – only date – child of J.D. and M.E. Smith (Area 1)

Smith, Iona V. – September 4, 1902 – July 16, 1973 – DS with Jesse W. Smith (Area 2)

Smith, J.A. Wright – no dates (grave not found in November 2006)

Smith, James L. – August 13, 1925 – September 22, 2000 – DS with Robbie Smith (Area 1)

Smith, Jeff D. – August 24, 1861 – July 1, 1938 – DS with Mary E. Smith (Area 1)

Smith, Jeff O'Donnell – June 30, 1924 – March 5, 2002 – Cpl U.S. Marines WWII (Area 1)

Smith, Jesse W. – December 30, 1896 – October 13, 1981 – U.S. Army WWI – DS with Iona V. Smith (Area 2)

Smith, Jimmy Dawn – January 1, 1962 – January 14, 1962 (grave not found in November 2006)

Smith, John B. – 1856 – 1930 – DS with Laura Smith (Area 2)

Smith, John F. – October 26, 1855 – September 9, 1939 – DS with Sarah E. Smith (Area 2)

Smith, John L. – no dates – Co. A 36th Ark. Inf. CSA (Area 2)

Smith, Joseph Octavous – January 15, 1883 – March 5, 1980 – DS with Daisy Pathenia Smith (Area 3)

Smith, June E. – May 8, 1917 – only date – DS with Harlon L. Smith (Area 3)

Smith, K.E. – June 12, 1863 – July 23, 1895 – TS with Frank W. Mary L. Smith (Area 1)

Smith, Laura – 1875 – 1963 – John B. Smith (Area 2)
Smith, Mary – Died July ?, 1953 – age 64 years (unmarked grave) (from published obituary)
Smith, Mary E. – February 2, 1869 – June 4, 1904 – DS with Jeff D. Smith (Area 1)
Smith, Mary L. – September 15, 1834 – January 17, 1895 – TS with Frank W. and K.E. Smith (Area 1)
Smith, Merrell M. – May 18, 1905 – December 27, 1979 (Area 2)
Smith, Mittie Matilda – 1847 – 1889 – wife of Robert H. Smith (Area 1)
Smith, Mitty – 1885 – 1941– same stone with Addie and Ed Smith (Area 2)
Smith, Nancy Magness – January 24, 1833 – July 19, 1898 (Area 1)
Smith, Noble Jewel – March 26, 1911 – January 5 1969 – DS with Sinclair Edgar Smith (Area 2)
Smith, Nora – 1876 – 1960 (Area 2)
Smith, Odus Horace – February 13, 1892 – January 13, 1980 – U.S. Marine Corps WWI – DS with Esther Marsh Smith (Area 2)
Smith, Ora – February 4, 1892 – January 23, 1966 – DS with Richard Smith (Area 2)
Smith, Priscilla – 1817 – 1894 –DS with William Smith (Area 1)
Smith, Richard – October 1, 1893 – January 31, 1956 – DS with Ora Smith (Area 2)
Smith, Robbie A. – November 8, 1928 – February 5, 1989 – DS with James L. Smith (Area 1)
Smith, Robert H. – 1846 – 1923 – Veteran, CSA (Area 1)
Smith, Robert Holt – May 12, 1926 – November 10, 1965 – S2 USNR (Area 2)
Smith, Robert L – August 1, 1897 – November 21, 1984 (Area 2)
Smith, Ruby H. – November 2, 1904 – May 24, 1984 (Area 2)
Smith, S. D. “Doug” – January 22, 1904 – November 13, 1973 (Area 2)
Smith, Sam H. – December 15, 1873 – November 22, 1903 (Area 2)
Smith, Sarah E. – March 31, 1862 – April 26, 1944 – DS with John F. Smith (Area 2)
Smith, Sinclair Edgar – February 23, 1908 – December 9, 1982 – DS with Noble Jewell Smith (Area 2)
Smith, Tammy Dawn – January 14, 1962 – only date – daughter of Gorman and Betty Smith (Area 3)
Smith, Thomas H. – May 7, 1941 – May 10, 2000 (FM) (grave not found in November 2006)
Smith, Tiffany Michelle – December 18, 1986 – June 3, 1990 (Area 1)
Smith, William G. – 1861 – 1927 (Area 1)
Smith, William Marion – October 6, 1913 – May 24, 1999 – DS with Bernadine Smith (Area 2)
Smith, William – 1801 –1885 – DS with Priscilla Smith (Area 1)
Smith, William “Doc” – July 5, 1822 – February 11, 1870 (Area 1)
Smith, Willie J. – December 12, 1867 – February 2, 1921 (Area 2)
Snow, Alma G. – April 22, 1901 – January 17, 1967 – DS with Newton C. Snow (Area 2)
Snow, Baby – no dates (Area 2)
Snow, Clyde C. – June 20, 1924 – May 22, 2006 – Tec4 U.S. Army WWII – DS with Edith Snow (Area 2)
Snow, Edith – June 20, 1928 – only date – DS with Clyde C. Snow (Area 2)
Snow, Lester Edwin – July 30, 1921 – November 18, 1959
Snow, Newton C. – August 8, 1896 – February 10, 1965 – Pvt. U.S. Army WWI – DS with Alma G. Snow (Area 2)
Snowden, Irene – 1913 – 1953 – DS with Wilford Snowden (Area 2)
Snowden, Wilford – 1904 – 1974 – DS with Irene Snowden (Area 2)

Southard, Gentry U. – June 12, 1910 – November 12, 1978 – Pfc. U.S. Army WWII – DS with Mabel C. Southard (Area 1)
Southard, Mabel C. – July 2, 1915 – June 16, 2003 – DS with Gentry U. Southard (Area 1)
Spaulding, Earl H. – June 10, 1914 – February 20, 2003 – DS with Elizabeth Louise Spaulding (Area 2)
Spaulding, Elizabeth Louise – May 5, 1921 – November 30, 1996 – DS with Earl H. Spaulding Area 2)
Spaulding, Nancy L. – March 17, 1944 – only date (Area 2)
Spearman, Mirrian R. – June 3, 1904 – September 1, 1970 (Area 4)
Spearman, Rena B. – April 18, 1881 – January 14, 1976 (Area 4)
Spence, Jack Brent – June 25, 1925 – only date – DS with Maggie Arlene Spence (Area 4)
Spence, Maggie Arlene – September 16, 1925 – March 20, 2001 – DS with Jack Brent Spence (Area 4)
Spencer, Betty Dale – January 25, 1907 – January 25, 2000 – DS with Dorothy Lillian Dale (Sister) (Area 3)
Spencer, Infant – died June 13, 1943 – only date (grave not found in November 2006)
Spencer, Laverne – April 8, 1932 – only date – DS with Mabern E. Spencer (Area 4)
Spencer, Mabern E. – October 21, 1923 – November 6, 2000 – DS with Laverne Spencer (Area 4)
Spencer, Peggy Joyce – born and died November 17, 1939 (Area 2)
Spratt, Allie V. – April 11, 1897 – March 19, 1934 (Area 2)
Spratt, Annie A. – January 27, 1897 – July 30, 1963 (Area 2)
Spratt, Walter N. – May 16, 1890 – October 8, 1968 (Area 2)
Stanton, Aurthur M. – September 2, 1911 – August 10, 1995 (Area 4)
Stark, Ella R. – 1934 – 1982 – DS with Melvin Otto Stark (Area 2)
Stark, Emma – August 6, 1864 – January 21, 1911 (Area 1)
Stark, J.M. – January 14, 1859 – April 5, 1926 (Area 1)
Stark, James Millard – born and died April 29, 1925 (Area 1)
Stark, Melvin Otto – 1930 – 1982 – M/Sgt U.S. Air Force Vietnam – DS with Ella R. Stark (Area 2)
Stark, Mildred – no dates - memorial by Faye and C.A. (Area 1)
Stark, Riley B. – March 2, 1892 – October 22, 1922 (Area 1)
Stark, William Isaac – May 9, 1915 – May 10, 1915 (Area 1)
Statler, Douglas – August 23, 1972 – March 14, 1973 (Area 2)
Statler, E. – no dates (Area 2)
Stephens, Cathelen – 1935 – 1936 (Area 2)
Stephens, Catheran – January 11, 1878 – July 18, 1961 (Area 2)
Stephens, James J. – February 14, 1880 – January 1, 1975 (Area 2)
Stephens, Rachel – January 1857 – April 17, 1932 (Area 2)
Stephens, Sparlen – November 7, 1899 – April 10, 1971 (Area 2)
Stephenson, Brian David – May 18, 1970 – December 1, 1990 (Area 5)
Sterling, C.H. Jr. – July 13, 1917 – June 2, 1918 – son of S.H. and Ethel Mays Sterling (Area 1)
Stewart, A.J. – June 26, 1830 – July 28, 1902 – Sgt. Co. A 7th KY Vol. Inf. – husband of N.E. Stewart (Area 1)
Stewart, Addie V. – December 3, 1879 – August 4, 1929 – DS with Fred K. Stewart (Area 1)
Stewart, Bobby J. – October 2, 1928 – March 21, 1983 – DS with Mildred F. Stewart (Area 1)
Stewart, Charles Leon – February 7, 1919 – July 20, 2000 – DS with Mary Alice Stewart (Area 3)

Stewart, Charles – May 31, 1918 – July 11, 1919 (Area 1)
Stewart, Clifton – February 25, 1901 – November 6, 1905 (Area 1)
Stewart, David T. – October 22, 1853 – April 11, 1906 (Area 1)
Stewart, Donald – August 5, 1920 – July 6, 1921 (Area 1)
Stewart, Dorothy – January 12, 1912 – March 17, 1912 (Area 1)
Stewart, Edith May – July 8, 1911 – March 11, 1981 – DS with James E. Stewart (Area 3)
Stewart, Fred K. – January 3, 1875 – October 18, 1932 – DS with Addie V. Stewart (Area 1)
Stewart, Fred V. – March 30, 1937 – July 22, 2003 – U.S. Marine Corps (Area 1)
Stewart, Frieda H. – September 15, 1915 – December 8, 1976 – DS with Hubert E. Stewart (Area 1)
Stewart, George W. – January 3, 1880 – July 25, 1881 (Area 1)
Stewart, Helen E. – March 3, 1914 – November 7, 1988– TS with John Stewart (brother-in-law) and Linnie L. Stewart (husband) (Area 1)
Stewart, Hubert E. – March 10, 1904 – April 10, 1979 – DS with Frieda H. Stewart (Area 1)
Stewart, Infant – September 2, 1899 – September 11, 1899 (Area 1)
Stewart, J.S. – September 7, 1865 – July 14, 1906 (Area 1)
Stewart, James E. – July 26, 1907 – January 13, 1991 – DS with Edith May Stewart (Area 3)
Stewart, Joe – March 27, 1908 – August 5, 1908 (Area 1)
Stewart, John L. – July 6, 1922 – November 10, 1988– TS with Linnie L. Stewart (brother) and Helen E. Stewart (Area 1)
Stewart, Lillie V. – August 11, 1860 – February 4, 1898 – wife of D.T. Stewart (Area 1)
Stewart, Linnie L. – February 12, 1907 – October 21, 1987 – TS with John (brother) and Helen E. Stewart (wife) (Area 1)
Stewart, Louise V. – October 28, 1913 – September 19, 1994 – DS with Thomas E. Stewart (Area 1)
Stewart, Margaret – July 5, 1878 – October 28, 1958 (Area 1)
Stewart, Mary Alice – October 24, 1919 – October 4, 1993 – DS with Charles Leon Stewart (Area 3)
Stewart, Mildred F. – December 10, 1929 – only date – DS with Bobby J. Stewart (Area 1)
Stewart, N.E. – May 8, 1836 – April 22, 1896 – wife of A.J. Stewart (Area 1)
Stewart, Thomas E. – June 16, 1909 – October 3, 1993 – DS with Louise V. Stewart (Area 1)
Stewart, William – September 16, 1905 – March 10, 1907 (Area 1)
Stiles, Wanda Sue – September 17, 1920 – August 11, 1976 (Area 3)
Stitt, Claudia L. Grissom – 1880 – 1956 – DS with William F. Stitt (Area 2)
Stitt, Mary E. – October 14, 1844 – March 28, 1935 – DS with William E. Stitt (Area 2)
Stitt, William E. – March 19, 1832 – May 9, 1906 – DS with Mary E. Stitt (Area 2)
Stitt, William F. – 1873 – 1910 – DS with Claudia L. Grissom Stitt (Area 2)
Stokes, Cecile Rehtin – February 21, 1900 – January 1, 1980 – DS with John Stokes (Area 2)
Stokes, John – August 8, 1902 – August 11, 1993 – DS with Cecile Rehtin Stokes (Area 2)
Stokes, Lewis Somers – April 17, 1922 – June 6, 1977 (Area 2)
Stoltz, Bonnie Lou Smith – May 13, 1952 – September 24, 2001 (Area 2)
Stone, Fred Hoyt – March 11, 1895 – November 7, 1925 (Area 1)
Strangle, Virgil Asa – August 29, 1878 – August 6, 1902 (Area 2)
Strayhorn, Alex – December 1, 1897 – June 27, 1981 – DS with Wilma Westbrook Strayhorn (Area 2)
Strayhorn, Alvy – July 7, 1910 – December 15, 1977 – Tec5 U.S. Army WWII – DS with F. Geneva Strayhorn (Area 2)
Strayhorn, F. Geneva – January 19, 1930 – only date – DS with Alvy Strayhorn (Area 2)

Strayhorn, Wilma Westbrook – February 22, 1908 – June 11, 1993 – DS with Alex Strayhorn (Area 2)

Strickland, John – Died November 21, 1955 – only date (unmarked grave) (from published obituary)

Suawell, Fannie E. – August 28, 1871 – September 29, 1876 – daughter of J.H. and B.J. Suawell (Area 1)

Sullivan, Effie A. – October 2 1909 – August 9, 1993 – DS with Lee Roy Sullivan (Area 2)

Sullivan, Hershel Lee – June 1, 1929 – April 4, 2000 – U.S. Army (Area 2)

Sullivan, Jimmie Edward – December 15, 1941 – September 13, 2001 – husband of Thelma Sullivan (Area 2)

Sullivan, Lee Roy – July 23 1903 – December 29, 1968 – DS with Effie A. Sullivan (Area 2)

Sullivan, Pleas – January 10, 1910 – April 7, 1969 (Area 2)

Sullivan, Walter Henry – May 5, 1936 – October 16, 2003 – EM3 U.S. Navy (Area 2)

Sykes, Verna – September 9, 1914 – March 10, 1979 (Area 1)

Talkington, Sarah A. – September 14, 1835 – January 20, 1902 – wife of Rev. James M. Talkington (Area 1)

Talkington, W.P. – March 26, 1873 – January 8, 1922 (Area 2)

Talkington, Rev. James M. – October 14, 1835 – October 1, 1905 – husband of Sarah A. Talkington (Area 1)

Tanneberger, Albert G. – November 27, 1897 – April 2, 1987 (Area 2)

Tanneberger, Herman P. – December 25, 1858 – April 4, 1928 – DS with Wilhelmena Tanneberger (Area 2)

Tanneberger, Walter – died January 19, 1921 – only date – Pvt. U.S. Army (Area 2)

Tanneberger, Wilhelmena – December 31, 1858 – April 10, 1947 – DS with Herman P. Tanneberger (Area 2)

Tanner, Francis O. – September 25, 1886 – June 25, 1968 (grave not found in November 2006)

Tanner, Lendell Eugene – August 17, 1944 – October 26, 1995 – U.S. Navy Vietnam (Area 2)

Tarkington, Edna M. Baker – January 16, 1921 – January 3, 1989 – DS with Horace Eugene Tarkington (Area 3)

Tarkington, Horace Eugene – October 31, 1921 – September 16, 2000 – DS with Edna M. Baker Tarkington (Area 3)

Tate, Francis Vincent – September 20, 1935 – only date – DS with Nina Jean Fortenberry Tate (Area 4)

Tate, Harry E. – August 18, 1913 – November 2, 1998 – DS with M. Geraldine Tate (Area 4)

Tate, M. Geraldine – March 12, 1917 – February 24, 1998 – DS with Harry E. Tate (Area 4)

Tate, Nita Jean Fortenberry – October 1, 1936 – only date – DS with Francis Vincent Tate (Area 4)

Taylor, Barney W. – March 2, 1921 – Only date – DS with DS with Lois Gassaway Taylor (Area 3)

Taylor, Clintern – October 11, 1897 – December 31, 1959 – DS with Elizabeth Taylor (Area 3)

Taylor, Dorothy – November 27, 1940 – October 6, 1998 (FM) (grave not found in November 2006)

Taylor, Elizabeth – November 9, 1903 – November 3, 1983 – DS with Clintern Taylor (Area 3)

Taylor, Lois Gassaway – August 22, 1926 – only date – DS with Barney W. Taylor (Area 3)

Teague, Alice – c1926 – December 30, 1945 (grave not found in November 2006)

Teaster, Geraldine – January 26, 1928 – only date (Area 4)

Thatcher, Angel – January 7, 1917 – November 8, 1978 (grave not found in November 2006)

Thatcher, Pete – January 1, 1915 – June 26, 1982 (grave not found in November 2006)

Thomas, Ellen – May 23, 1904 – 1946 – wife of J.T. Thomas (Area 1)

Thomas, George – died September 28, 1914 – only date (Area 1)
Thomas, S.M. – died December 21, 1921 – only date (Area 1)
Thompson, Infant girl – December 6, 1932 – only date (Area 2)
Thornton, Mattie – July 14, 1889 – January 6, 1981 – DS with Roy Dye Thornton (Area 3)
Thornton, Roy Dye – December 20, 1893 – June 22, 1971 – DS with Mattie Thornton (Area 3)
Thrasher, Janie L. – July 13, 1960 – August 6, 1961 (grave not found in November 2006)
Turk, Zillars – October 14 1899 – only date (Area 4)
Turnage, Lea M. – born and died November 30, 1977 (Area 2)
Turnbow, Bobby Ray – June 5, 1939 – June 16, 1939 – son of Mr. and Mrs. Floyd Turnbow (Area 2)
Turnbow, Charley – June 30, 1878 – November 12, 1960 (Area 2)
Turnbow, Effie – December 28, 1900 – August 10, 1973 (Area 2)
Turnbow, Floyd R. – January 30, 1911 – July 25, 1984 – Pvt. U.S. Army WWII – DS with Sally Ruth Turnbow (Area 2)
Turnbow, Harvey – May 22, 1908 – November 5, 1972 (Area 2)
Turnbow, Mary E. – March 9, 1882 – December 28, 1928 (Area 2)
Turnbow, Nellie G. – September 4, 1904 – April 2, 1966 (Area 2)
Turnbow, Patricia Ruth – February 5, 1936 – April 5, 1936 – daughter of Mr. and Mrs. Floyd Turnbow (Area 2)
Turnbow, Sally Ruth – March 11, 1917 – November 26, 2005 – DS with Floyd R. Turnbow (Area 2)
Turner, Deacon Thomas E. – June 6, 1916 – October 17, 1999 (Area 4)
Turner, James – August 15, 1903 – April 20, 1995 (Area 4)
Turner, Jessie – November 29, 1909 – April 30, 1976 – SP/5 U.S. Army WWII (Area 4)
Turner, Lady Patience – 1912 – 1993 (Area 4)
Turner, Myrlene L. – July 8, 1935 – April 8, 2003 (Area 4)
Turner, Noel D. Sr. – December 26, 1934 – August 5, 1981 (Area 4)
Turner, Violet – 1910 – 1978 (Area 4)
Tuttle, Albert – 1910 – 1976 (grave not found in November 2006)
Tuttle, Leona – 1921 – 1983 (grave not found in November 2006)
Tuttle, Linda – 1922 – 1934 (grave not found in November 2006)
Tuttle, Linda – 1942 – 1944 (grave not found in November 2006)
Underwood, Sarah Nicole – August 31, 1982 – daughter of Lee and Shearon Underwood (Area 4)
Unknown – died February 17, 1904 – unreadable double stone at the far south end of the cemetery (Area 1)
Unknown – no dates – unreadable double stone at the far south end of the cemetery (Area 1)
Uttley, Otto George – December 19, 1893 – October 30, 1975 (Area 3)
Vandament, Melba Dianne – born and died July 8, 1959 (Area 3)
Vanderver, Ruval Earl – April 27, 1905 – December 13, 1978 – U. S. Army Veteran (Area 2)
Vardaman, Leon O. – August 29, 1922 – September 26, 1961 (Area 3)
Vaughn, Barnett G. – July 19, 1905 – March 2, 1989 – DS with Margaret P. Vaughn (Area 2)
Vaughn, H. Coleman – January 22, 1931 – April 27, 2004 – DS with Mary Frances Vaughn (Area 2)
Vaughn, Margaret P. – September 5, 1909 – March 15, 1949 – DS with Barnett G. Vaughn (Area 2)

Vaughn, Mary Frances – August 9, 1934 – only date – DS with H. Coleman Vaughn (Area 2)
Vaughn, Matthew Coleman – October 13, 1977 – October 6, 1986 (Area 2)

Vaughn, Rosa Mae – May 7, 1906 – September 5, 1997 (Area 2)
Vincent, Daisy F. – February 12, 1892 – June 30, 1985 – DS with Owen C. Vincent (Area 2)
Vincent, Ellen Marie – December 21, 1919 – May 1, 1970 – DS with Jarrell C. Vincent (Area 2)
Vincent, Ethel McGraw – February 20, 1928 – only date – DS with Harold L. Vincent (Area 1)
Vincent, Harold L. – August 26, 1925 – June 27, 1990 – DS with Ethel McGraw (Area 1)
Vincent, Hazel Caldwell – September 9, 1904 – June 23, 1972 – DS with James H. Vincent (Area 1)
Vincent, James H. – December 24, 1903 – May 3, 1980 – DS with Hazel Caldwell Vincent (Area 1)
Vincent, Jarrell C. – October 23, 1917 – June 14, 1978 – DS with Ellen Marie Vincent (Area 2)
Vincent, Jessie L. – January 25, 1869 – May 30, 1945 – DS with Wesley Vincent (Area 1)
Vincent, Mary A. – March 22, 1911 – December 22, 1949 – DS with Nona A. Vincent (Area 2)
Vincent, Mary J. Thomas – August 12, 1911 – December 26, 1949 (grave not found in November 2006)
Vincent, Mary J. – August 12, 1830 – January 9, 1905 – wife of Thomas Vincent (Area 1)
Vincent, Nona A. – November 6, 1907 – March 17, 1997 – DS with Mary A. Vincent (Area 2)
Vincent, Owen C. – August 5, 1889 – December 21, 1971 – DS with Daisy F. Vincent (Area 2)
Vincent, Rev. Thomas S. – August 4, 1826 – January 10, 1888 (Area 1)
Vincent, Wesley A. – June 13, 1861 – August 30, 1934 (Area 1)
Volmer, Freda – May 10, 1943 – Only date (Area 2)
Waddle, Fayrene – July 27, 1929 – January 9, 2008
Waggle, Elizabeth – August 11, 1923 – October 5, 1988 – DS with Orville Waggle (Area 2)
Waggle, Orville – February 15, 1924 – only date – DS with Elizabeth Waggle (Area 2)
Waggle, William Arnold – 1923 – 1990 – Pfc. U.S. Army WWII (Area 4)
Waggle, William Arnold Jr. – died May 31, 2007 – age 63 years
Waggoner, Modine – April 21, 1913 – March 29, 1977 (Area 2)
Walker, Adelaide W. – May 22, 1889 – August 17, 1965 (Area 2)
Walker, Allie Exum – March 8, 1884 – November 11, 1960 – wife of John S. Walker (Area 2)
Walker, Clarice N. – October 24, 1905 – February 17, 1907 – daughter of John S. and Allie Walker (Area 2)
Walker, Dorrise – December 9, 1909 – February 23, 1910 (Area 2)
Walker, Edward W. – October 21, 1885 – March 11, 1947 (Area 2)
Walker, Emma Howard – September 28, 1878 – March 28, 1903 – wife of Robert S. Walker (Area 1)
Walker, Florence Hollis – June 13, 1869 – March 4, 1922 (Area 2)
Walker, Hobart S. – March 14, 1851 – November 28, 1892 (grave not found in November 2006)
Walker, Howard – September 28, 1878 – March 28, 1903 (grave not found in November 2006)
Walker, James O. – October 31, 1876 – March 14, 1955 – DS with Rosa H. Walker (Area 2)
Walker, Jesse L. – August 14, 1974 – January 12, 1962 (Area 2)
Walker, Jessie Ruth – December 20, 1913 – June 14, 1998 (Area 2)
Walker, John S. – no dates (grave not found in November 2006)
Walker, Joseph A. – January 1, 1818 – April 28, 1878 (Area 1)
Walker, Joshua Donnell – April 9, 1983 – June 17, 2002 (Area 3)
Walker, M. E. – November 7, 1853 – April 1, 1891 – wife of R.S. Walker (Area 1)
Walker, M.E. – 1834 – 1891 (grave not found in November 2006)
Walker, Malinda – 1818 – 1888 (Area 1)
Walker, Mary E. – no date – infant daughter of James and Rose Walker (Area 2)

Walker, Mary E. – no dates (grave not found in November 2006)
Walker, Mrs. Loena – January 1, 1890 – January 24, 1910 (grave not found in November 2006)

Walker, Ola Booth – January 17, 1876 – July 25, 1952 (Area 2)
Walker, Richard B. – November 14, 1855 – January 26, 1884 (Area 1)
Walker, Robert Joe – 1897 – 1941 (Area 1)
Walker, Robert S. – March 14, 1851 – November 28, 1893 (Area 1)
Walker, Rosa H. – April 30, 1887 – December 26, 1955 – DS with James O. Walker (Area 2)
Walker, Samuel T. – June 14, 1868 – June 6, 1929 (Area 2)
Walker, Texana – 1854 – 1927 – DS with William B. Walker (Area 2)
Walker, W. B. – May 25, 1811 – November 16, 1890 (Area 1)
Walker, William B. – 1844 – 1924 – DS with Texana Walker (Area 2)
Walker, William B. – July 19, 1913 – April 29, 1993 (Area 2)
Walker, William C. – September 19, 1876 – January 20, 1970 (Area 2)
Wallis, Infant – born and died November 27, 1932 – son of L.T. and Dot Wallis (Area 5)
Wallis, Mary Belle – December 18, 1858 – March 12, 1941 – DS with Prentiss Barr Wallis (Area 1)
Wallis, Prentiss Barr – March 15, 1850 – April 26, 1909 – DS with Mary Belle Wallis (Area 1)
Wallis, Randolph – January 12, 1879 – March 21, 1903 (Area 1)
Walls, Daisy M. – September 13, 1915 – only date – DS with Hubert W. Walls (Area 3)
Walls, Dean – October 12, 1919 – only date – DS with Ernestine Walls (Area 3)
Walls, Ernestine – October 19, 1922 – November 25, 2004 – DS with Dean Walls (Area 3)
Walls, Hubert W. – May 5, 1912 – April 12, 1992 – DS with Daisy M. Walls (Area 3)
Walls, Ila Lee – November 2, 1914 – January 15, 2002 – DS with Vernon A. Walls (Area 3)
Walls, J. T. – December 11, 1888 – July 26, 1959 – DS with Mary Walls (Area 3)
Walls, Mary – June 6, 1885 – October 29, 1968 – DS with J.T. Walls (Area 3)
Walls, Nellie Mae – December 20, 1896 – February 7, 1986 – DS with William E. Walls (Area 3)
Walls, Vernon A. – February 20, 1914 – November 14, 1977 – DS with Ila Lee Walls (Area 3)
Walls, William E. – January 13 1892 – February 8, 1968 – DS with Nellie Mae Walls (Area 3)
Ward, Helen – 1956 – 1977 (Area 2)
Ward, I.B. – 1839 – 1883 (Area 1)
Ward, S.E. – 1839 – 1897 (Area 1)
Ward, S.J. – 1818 – 1891 (Area 1)
Ward, T.H. – 1870 – 1888 (Area 1)
Warner, Stanley – December 27, 1916 – February 14, 1925 (grave not found in November 2006)
Warren, Dadie Lambert – December 27, 1926 – October 13, 2003 (Area 4)
Washburn, Sarah A. – December 13, 1847 – November 4, 1896 (Area 1)
Washburn, Willie Oliver – February 11, 1903 – August 16, 1926 – wife of D.A. Washburn (Area 2)
Watson, Marlene C. – June 16, 1936 – August 30, 1992 (Area 2)
Watters, Infant – May 24, 1971 – only date (Area 2)
Weatherley, Hazel – June 8, 1928 – April 8, 1995 (Area 3)
Weaver, Glen Demoir – September 10, 1922 – January 8, 2006 – U.S. Navy WWII (Area 3)
Webb, Gilbert Madison – July 25 1955 – April 24, 1992 (Area 4)
Webb, M. Darline – November 5, 1960 – June 7, 1997 (Area 3)
Webb, Rubye J. – March 14, 1930 – October 4, 1974 (grave not found in November 2006)
Webb, Willie B. – November 9, 1920 – October 12, 2002 (Area 4)

Webb, Willie Bernard – January 21, 1962 – September 8, 1996 (Area 4)
Weisenfels, Stephen Gustav – born and died February 9, 2002 – son of Scott and Heather Weisenfels (Area 2)
West, Ethel – January 9, 1888 – May 18, 1927 – wife of J.B. West (Area 2)
West, J. B. – August 23, 1883 – January 26, 1963 – husband of Ethel West (Area 2)
West, Ola Lee – April 6, 1880 – December 8, 1979 (Area 5)
Whaley, Angela Jeanette – December 11, 1972 – DS with Bobby Eugene Whaley Jr. (Area 4)
Whaley, Bobby Eugene Jr. – June 27, 1971 – July 15, 2002 – DS with Angela Jeanette Whaley (Area 4)
Wheatley, Ada Madaline – March 29, 1920 – only date – DS with Alphas Ray Wheatley (Area 3)
Wheatley, Alphas Ray – October 27, 1979 – September 1, 1979 – DS with Ada Madaline Wheatley (Area 3)
Wheatley, Annie Lee – September 7, 1926 – September 29, 2003 (Area 3)
Wheatley, Arley A. – January 11, 1886 – March 10, 1953 – DS with Lula M. Wheatley (Area 2)
Wheatley, Earra Earline – April 8, 1920 – Only date – DS with Ralph A. Wheatley (Area 3)
Wheatley, Gary Doyne – March 29, 1957 – March 1, 2000 (Area 2)
Wheatley, John Doyne “J.D.” – June 27, 1909 – January 1999 (Area 2)
Wheatley, Lula M. – March 17, 1890 – January 15, 1962 (Area 2)
Wheatley, Ralph Aubrey – September 13, 1918 – August 3, 1994 (Area 3)
Wheatley, Willie M – January 1, 1904 – December 20, 1989 (Area 2)
Wheatley, Roy Lee – November 25, 1908 – March 28, 1981 (Area 3)
White, Barney Joe – December 20, 1928 – March 8, 1999 – DS with Sally June White (Area 3)
White, Sally June – December 6, 1932 – February 20, 2007 – DS with Barney Joe White (Area 3)
Whitehead, Beulah Mae – March 10, 1919 – only date – DS with Charles Robert Whitehead (Area 2)
Whitehead, Charles Robert – February 27, 1904 – March 6, 1985 – DS with Beulah Mae Whitehead (Area 2)
Whitwell, William D. – October 28, 1882 – September 5, 1963 (grave not found in November 2006)
Wideman, Artie Michaels – September 18, 1896 – March 13, 1975 – DS with Thomas Loyd Wideman (Area 2)
Wideman, Laura Josephine – February 7, 1902 – August 20, 1990 (Area 2)
Wideman, Thomas Loyd – September 5, 1896 – January 15, 1991 – DS with Artie Michaels (Area 2)
Wiley, Clara G. – August 27 1909 – March 7, 1996 – DS with O. Robert Wiley (Area 3)
Wiley, Irene – August 26, 1916 – December 10, 2003 – DS with Lester Wiley (Area 1)
Wiley, Jerry Dale – July 29, 1941 – October 6, 2006 (FM) (Area 3)
Wiley, Karen Regina – April 5, 1963 – April 26, 1965 – daughter of Oscar and Wanda Wiley (Area 3)
Wiley, Lester – February 4, 1911 – November 11, 1980 (Area 1)
Wiley, O. Robert – August 15, 1906 – August 20, 1988 (Area 3)
Wilkerson, Mervin – October 26, 1919 – only date – DS with Nona Wilkerson (Area 3)
Wilkerson, Nona – October 3, 1922 – only date – DS with Mervin Wilkerson (Area 3)
Wilkes, Lou A. – February 7, 1867 – April 20, 1960 (Area 1)
Williams, Alice – February 22, 1886 – March 17, 1948 (Area 2)
Williams, Chester L. – April 12, 1911 – January 3, 1985 – DS with Murlee Spencer Williams (Area 2)

Williams, Eliza D. – March 15, 1859 – November 30, 1917 – wife of Theophilus P. Williams (Area 1)
Williams, Judith C. – April 13, 1891 – September 9, 1973 (Area 2)
Williams, Mary M. – March 14, 1916 – May 6, 2004 – DS with Reed Williams (Area 2)
Williams, Murlee Spencer – March 13, 1920 – January 24, 2002 – DS with Chester L. Williams (Area 2)
Williams, Nettie F. Stokes – September 5, 1908 – February 12, 1985 (Area 2)
Williams, Newton B. – April 13, 1880 – March 14, 1912 (Area 1)
Williams, Reed – May 31, 1915 – May 4, 1980 (Area 2)
Williams, Ronnie – born and died August 23, 1946 (Area 2)
Williams, Susie A. – May 8, 1886 – August 20, 1891 – daughter of Theophilus P. and Eliza D. Williams (Area 1)
Williams, Theophilus P. – December 18, 1855 – September 9, 1927 (Area 1)
Williams, Walter M. – April 3, 1875 – October 28, 1958 (Area 2)
Wilson, Ellen – January 14, 1932 – August 17, 1994 (Area 2)
Wilson, Johnny B – January 7, 1923 – March 19, 1974 – U.S. Navy WWII (Area 2)
Wilson, Marvin Hamilton – February 7, 1927 – only date – DS with Sylvia A. Wilson (Area 3)
Wilson, Sylvia A. – September 27, 1935 – only date – DS with Marvin Hamilton Wilson (Area 3)
Winchester, Verna W. – June 20, 1905 – November 23, 1966 (Area 2)
Wood, Ganus – died February 10, 1977 – only date (grave not found in November 2006)
Wood, Mildred Mamie Phelps – March 27, 1900 – March 26, 1936 (Area 2)
Wood, Virgil – December 26, 1917 – February 8, 1997 – DS with Norma L. Feagin Wood (Area 3)
Wood, Edith V. – October 21, 1913 – February 7, 1988 (Area 2)
Wood, Norma L. Feagin – July 8, 1924 – only date – DS with Virgil Wood (Area 3)
Wood, Virginia Huffman Brown – October 17, 1914 – November 20, 2000 (Area 2)
Woodle, Don – November 18, 1939 – February 4, 2002 – husband of Maxine Woodle (Area 3)
Woodle, Maxine – November 29, 1939 – only date – DS with Don Woodle (Area 3)
Woods, Elvies J – September 29, 1915 – April 11, 1993 – Pvt. U.S. Army WWII – DS with Gladys J. Woods (Area 4)
Woods, Gladys J. – April 23, 1918 – only date – DS with Elvies J. Woods (Area 4)
Woods, Jerald Dale – July 26, 1944 – January 6, 1982 (Area 4)
Woods, Martha Ann – March 26, 1952 – only date (Area 4)
Woosley, John Stanley – April 28, 1924 – May 9, 1965 – USNR (Area 3)
Woosley, Laura E. – August 10, 1874 – February 23, 1963 (Area 2)
Woosley, Pearl M. – February 8, 1900 – February 14, 1969 – DS with Robert Lee Woosley (Area 3)
Woosley, Robert Lee – August 20, 1891 – July 26, 1959 – DS with Pearl M. Woosley (Area 3)
Woosley, William D. – October 8, 1860 – July 6, 1924 (Area 2)
Woosley, Zula – January 9, 1919 – April 18, 1979 (Area 2)
Wright, Alex – October 21, 1900 – February 8, 1992 – DS with Beulah Wright (Area 3)
Wright, Allie – 1874 – 1955 – DS with W.H. Wright (Area 2)
Wright, Breck – no dates – stone with Marion, Willela, Pat and J.A. Wright (Area 1)
Wright, Beulah – March 21, 1908 – August 28, 1997 – DS with Alex Wright (Area 3)
Wright, George D. – November 20, 1880 – September 10, 1968 (grave not found in November 2006)
Wright, Harry B. – July 27, 1906 – December 20, 1909 – son of W.H. and A. Wright (grave not found in November 2006)
Wright, Hester F. – April 18, 1880 – September 8, 1963 (grave not found in November 2006)

Wright, J.A. – no dates – stone with Marion, Willela, Pat and Breck Wright (Area 1)
 Wright, Jack B. – August 18, 1939 – September 24, 1960 (Area 2)
 Wright, James Ellis – February 2, 1873 – March 10, 1950 (grave not found in November 2006)
 Wright, Leo – December 17, 1927 – January 13, 1983 – DS with Margarette C. Wright (Area 3)
 Wright, Margrette C. – May 15 1927 – only date – DS with Leo Wright (Area 3)
 Wright, Marion – no dates – stone with J.A., Willela, Pat and Breck Wright (Area 1)
 Wright, Pat – no dates – stone with Marion, J.A, Willela and Breck Wright (Area 1)
 Wright, Sam – 1891 – 1978 – Pfc. U.S. Army WWI (Area 2)
 Wright, W. H. – 1868 – 1946 (Area 2)
 Wylie, Barbara A. – July 13, 1839 – November 9, 1864 – wife of J.C. Wylie (grave not found in November 2006)
 Wylie, Don Clark – April 4, 1861 – August 9, 1862 (grave not found in November 2006)
 Wylie, John Clark – April 4, 1861 – August 9, 1963 (grave not found in November 2006)
 Wylie, Mary E. – July 13, ??? – November 9, 1864 – daughter of J.C. and Barbara A. Wylie (Area 1)
 Yarbrough, Billie V. – July 15, 1927 – only date – DS with Vindell J.
 Yarbrough, Calvin Jerrell – March 14, 1928 – September 28, 1993 – F2 U.S. Navy WWII (Area 4)
 Yarbrough, Mary Leoda – April 30, 1929 – only date (Area 4)
 Yarbrough, Vindell J. – December 17, 1922 – only date – DS with Billie V.
 Yingling, A. Wilton – August 19, 1905 – March 25, 1982 – DS with Thelma Yingling (Area 2)
 Yingling, Thelma M. – June 28, 1907 – September 7, 1978 – DS with A. Wilton Yingling (Area 2)
 Young, Luella – February 11, 1888 – July 12, 1964 (Area 4)
 ?, October 5, 1868 carved on a rock – no other information (Area 5)

Following is a list of veterans that are known to be buried in Gum Springs Cemetery, there are probably many more that do not have a military marker. If you know of a veteran buried here (or anywhere else in White County) that does not have a headstone, contact the White County Veterans Service Office at 411 North Spruce, Searcy, AR 72143, phone 501 279-6210, write the White County Historical Society, P.O. Box 537, Searcy, AR 72145, or contact Leroy "Lee" Blair at 557 Baker Road, Searcy, AR 72143, phone 501 207-2057. The federal government will provide a military headstone free of charge to a qualified veteran.

Angel, Billy – August 21, 1924 – May 18, 1985 – Pfc. U.S. Army Inf. WWII (Area 2)
 Arnold, Perry B. – March 20, 1893 – October 5, 1981 – U.S. Army WWI (Area 2)
 Arnold, Scott W. – July 6, 1891 – April 12, 1978 – Pfc. U.S Army WWII (Area 1)
 Baker, Archie R. – June 4, 1906 – April 28, 2002 – U.S. Army WWII (Area 2)
 Baker, Virgil A. – April 2, 1924 – January 10, 1976 – Pfc. U.S. Army WWII (Area 2)
 Ballard, Robert B. – November 15, 1926 – September 6, 1995 – GM3 U.S. Navy Korea (Row 2)
 Barger, Albert D. – July 14, 1924 – October 16, 1977 – T/Sgt. U.S. Air Force WWII, Korea, & Vietnam (Area 3)
 Bateman, Jerry G. – September 20, 1891 – September 26, 1968 – Pvt. U.S. Army WWI (Area 2)
 Beck, Jerrell L. – September 19, 1932 – June 28, 1996 – U.S. Air Force Veteran – (Area 3)
 Britt, Hiram M. – Died June 4, 1957 – only date – Cook U.S. Army (Area 2)
 Britt, James W. – May 8, 1888 – October 15, 1956 – Pvt. U.S. Army WWI (Area 2)

Britt, Thomas Ben – July 17, 1894 – April 26, 1960 – Pvt. Co H. 38 Inf. WWI (Area 2)
Brown, Rex – 1917 – 1975 – Cpl. U.S. Army WWII (Area 2)
Brown, Talmadge – May 28, 1919 – April 26, 1945 – Tec5 U.S. Army WWII (Area 2)
Brown, William A. – July 15, 1888 – July 3, 1967 – Pfc. 29th Evac Hospital WWI (Area 5)
Brown, William L. – May 13, 1909 – March 5, 1982 – Pvt. U.S. Army WWII (Area 2)
Burkett, Carl D. – July 28, 1919 – August 16, 1996 – Cpl. U.S. Army WWII (Area 3)
Burkett, Hulan G. – October 11, 1922 – March 31, 1991 – Tec5 U.S. Army WWII (Area 3)
Carr, Ceathel Elmo – April 13, 1929 – June 28, 2002 – Pvt. U.S. Army Korea (Area 4)
Carr, Nicholas “Nick” – July 6, 1950 – December 15, 1999 - Pvt. U.S. Army Vietnam (Area 4)
Caruth, Gus E. – January 22, 1892 – September 12, 1968 – Pvt. U.S. Army WWI (Area 2)
Caruth, Joseph Coleman – April 14, 1917 – April 18, 1953 – Sgt. 716 Med. Sanitary Co WWII (Area 2)
Chandler, Bruce – January 29, 1909 – March 8, 1977 – U.S. Navy WWII (Area 2)
Chrisp, Ellis – February 20, 1895 – December 28, 1961 – Pvt. Co K 38th Inf. Div WWI (Area 2)
Chrisp, Robert W. – no dates – Co. A Ark. Inf. CSA (Area 1)
Clause, Jerry Wayne Jr. – January 27, 1969 – March 4, 1999 – Cpl. U.S. Marines (Area 3)
Cofer, Mineral F. – April 21, 1927 – August 16, 1995 – U.S. Navy WWII (Area 2)
Collins, James E. – February 9, 1924 – March 24, 1975 – Pvt. U.S. Army WWII (Area 3)
Coon, Charles Edward – died January 22, 1930 – only date – Fireman 3C USNR (Area 2)
Cowan, Robert Wayne Jr. – September 14, 1947 – March 12, 2001 – S/P4 U.S. Army (Area 4)
Crisco, Randall D. – August 5, 1954 – August 18, 1989 – Sgt. U.S. Army (Area 3)
Cullum, Herbert J. – 1920 – 1986 – Pfc. U.S. Army WWII (grave not found in November 2006)
Davis, Elvis – February 17, 1906 – February 8, 1969 – Pvt. U.S. Army WWII (Area 2)
Day, Milton Henry – 1915 – 1980 – Tec4 U.S. Army WWII (Area 4)
Deadmon, C. Leon – April 3, 1914 – November 8, 1984 – S1 U.S. Navy WWI (Area 2)
Demaree, Dewey Carl – August 7, 1936 – August 31, 2000 – U.S. Navy Korea (Area 2)
Dobbins, Morgan Haley – March 11, 1921 – only date – S2 U.S. Navy (grave not found in November 2006)
Dobbins, Wilbur O. – June 4, 1918 – December 14, 1983 – S1 U.S. Navy WWII (Area 2)
Dokin, Matthew H. – October 6, 1933 – only date – Pvt. S.N. Corps (Area 1)
DuBose, Connie R. – May 19, 1896 – November 10, 1977 – Pvt. U.S. Army WWI (Area 2)
Duncan, Charlie J. – October 20, 1913 – January 27, 1964 – Pvt. 325th Arty WWII (Area 3)
English, Arthur Danil – June 6, 1896 – September 22, 1976 – Pvt. U.S. Army WWI (Area 2)
English, William Earl – April 16, 1943 – September 10, 1991 – Pvt. U.S. Marine Corps Vietnam (Area 4)
Evans, Archie Wilbur – August 2, 1914 – September 8, 1993 – AEM3 U.S. Navy – M/Sgt. U.S. Army WWII (Area 2)
Farmer, Robert E. Jr. – August 30, 1920 – December 29, 1978 – U.S. Army WWII (Area 2)
Farmer, Rufus Lee – February 23, 1924 – December 14, 1992 – U.S. Army WWII
Frye, James F. – October 25, 1930 – January 21, 1966 – A1C U.S. Air Force Korea (Area 3)
Fuller, James L. – September 14, 1920 – February 21, 1980 – Pvt. U.S. Army WW II (Area 2)
Fuller, John B. – November 30, 1906 – August 17, 1974 – Cpl. U.S. Army (Area 3)
Fuller, John Pershing – May 16, 1918 – January 1, 1994 – Pvt. U.S. Army WWII (Area 5)
Fuller, Larry Alan – December 4, 1947 – March 31, 1999 – SP/5 U.S. Army Vietnam (Area 2)
Fuller, William P. – 1911 – 1980 – S/Sgt U.S. Army WWII (Area 3)

Gaines, James – February 9, 1924 – April 24, 1975 – Pvt. U.S. Army WWII (grave not found in November 2006)

Gaines, Robert Berl – October 3, 1940 – October 4, 1990 – U.S. Army (Area 3)

Garner, Robert E. – February 8, 1932 – December 19, 1984 – U.S. Navy Korea (Area 2)

Gateley, John H. – March 4, 1894 – June 10, 1961 – 117th Inf. 30th Div. WWI (Area 3)

Gouge, Earl Nelson – December 18, 1926 – August 11, 1994 – U.S. Army WWII (Area 2)

Graham, Bradford E. – March 20, 1927– September 17, 1974 – Pfc. U.S. Army (grave not found in November 2006)

Green, Gerald T. – April 17, 1925 – August 25, 2003 – Pfc. U.S. Army WWII (Area 3)

Hanner, Oscar Allan – February 20, 1915 – August 5, 1961 – Sgt. 1881st Svc Comd unit WWII (Area 2)

Harlan, Cletus Dale – September 18, 1922 – April 25, 2003 – G.M.2 U.S. Navy WWII (Area 2)

Harrell, Kelsie – August 20, 1931 – only date – Pfc. U.S. Army 310th Abn Bn (Area 2)

Harrison, Harold Nelson – May 19, 1925 – April 2, 1981 – Pvt. U.S. Army WWII (Area 2)

Hartman, Conrad Eugene – May 29, 1949 – February 8, 1996 – SP/5 U.S. Army Vietnam (Area 2)

Hartzog, Joshua B. – February 3, 1866 – May 27, 1939 – *MEDAL OF HONOR WINNER* (Area 2)

Head, Leon S. – October 31, 1895 – January 14, 1980 – Pvt. U.S. Army WWI (Area 1)

Honey, James L. – August 5, 1926 – December 12, 1986 – U.S. Army WWII (Area 4)

Hopper, Leo – 1931 – 1980 – SP/4 U.S. Army Korea (Area 2)

Horn, John W. – May 26, 1914 – June 17, 1974 – Pfc. U.S. Army (Area 2)

Horner, Clifton Ralph – December 23, 1931 – January 4, 2001 – Sfc. U.S. Army Vietnam (Area 3)

Hutchings, Lewis Edward – November 30, 1914 – July 28, 1996 – Combat WWII (Area 4)

Jackson, Oliver “Cat” – May 24, 1959 – August 29, 1996 (Area 4)

Jackson, Walter F.– October 11, 1894 – August 28, 1980 – Pvt. U.S. Army (Area 3)

Johnston, Darcy Dean – August 17, 1956 – December 28, 2003 – T/Sgt. U.S. Air Force Persian Gulf (Area 4)

Johnston, Wallace N. – 1897 – 1983 – Pfc. U.S. Army WWI & WWII (Area 4)

Jones, Horace L. – January 15, 1919 – January 5, 1968 – Cpl. 163rd Fld Arty Bn WWII (Area 2)

Joyner, L. E. – January 29, 1915 – February 1, 1966 – Cpl. Army Air Forces WWII (Area 2)

Killough, Monroe W. – November 23, 1893 – March 14, 1972 – Pfc. U.S. Army WWI (Area 1)

Kilman, Morris Gene – June 6, 1931 – December 19, 1987 – U.S. Navy Korea (Area 2)

Komatsu, Ernest I. – August 19, 1919 – February 4, 1996 – Pvt. U.S. Army WWII (Area 2)

Langford, James W. – March 24, 1893 – November 12, 1971 – Pvt. Co B 113th Inf. WWI (Area 2)

Light, Carthel L. – April 11, 1920 – October 31, 1983 – S/Sgt. U.S. Army WWII (Area 2)

Liles, Murray H. – December 14, 1916 – October 16, 1973 – Pfc. U.S. Army WWII (Area 2)

Mathis, Thomas F. Sr. – June 25, 1929 – February 4, 1993 – U.S. Air Force (Area 2)

McCoy, Alvy W. – 1919 – 1977 – Pfc. U.S. Army WWII (Area 2)

McCoy, Vernon Lee – September 13, 1926 – November 15, 1998 – S1 U.S. Navy WW II (Area 2)

Mears, Loyd Earney – March 2, 1895 – January 2, 1957 – Pvt. Co C 4th Bn U.S. Guards WWI (Area 2)

Mears, Simpson – January 11, 1889 – March 16, 1948 – Pvt. 153rd Inf. 39th Div WWI (Area 2)

Melton, Adam C. – July 31, 1919 – September 7, 1996 – Sgt U.S. Army WWII (Area 2)

Minyard, James Oscar Jr. – August 25, 1924 – November 6, 1952 – Sgt. Brty C 39th Fld Arty Bn WWII (Area 2)

Morgan, Haley – March 11, 1921 – Only date – S2 CI U.S. Navy (Area 2)

Morrow, William H. "Bill" – February 16, 1920 – January 4, 1997 – U.S. Army WWII (Area 3)
Myrick, Billy G. – November 26, 1929 – July 10, 1954 – A1C Air Police SQ U.S. Air Force (Area 2)
Neaville, Capt. John C. – no dates – Co. K, 8th Ark Inf. CSA (Area 1)
Oliver, Raymond – 1912 – 1977 – T/Sgt. U.S. Air Force WWII (grave not found in November 2006)
Oliver, Roland Clyde – February 17, 1935 – September 13, 1992 – Sgt. U.S. Army (Area 2)
Oliver, Roy W. – December 16, 1892 – December 8, 1931 – Pvt. 110th Inf. 28th Div WWI (Area 2)
Pearce, Orlie L. – June 29, 1922 – August 10, 1996 – U.S. Army WWII (Area 3)
Perry, Fate – died July 3, 1927 – only date – Missouri Sgt. 804th Pioneer 11th Inf. (Area 1)
Phillips, Everett E. – January 11, 1927 – March 2, 1999 – Sfc. U.S. Army WWII (Area 2)
Ramsey, Bill J. – October 2, 1908 – September 7, 1989 – Pvt. U.S. Army WWII (Area 3)
Ramsey, Raymond J. – May 10, 1912 – May 19, 1979 – Tec5 U.S. Army WWII (Area 3)
Rasco, Joe A. – May 13, 1921 – October 15, 2002 – Pfc. U.S. Army Air Corps WWII (Area 5)
Rexroad, F. T. – no dates – Sgt. Co K 52nd PA Inf. (Area 1)
Reynolds, William L. – March 27, 1930 – October 12, 1984 – A3C U.S. Air Force Korea (Area 2)
Rongey, Raymond H. – July 14, 1919 – July 25, 1971 – M/Sgt 96th Fld Maint SQ WWII & Korea (Area 2)
Rouse, Walter Dean – August 5, 1906 – August 12, 1968 – U.S. Navy WWII (Area 2)
Rowden, James Edward – July 6, 1923 – June 25, 1984 – S2 U.S. Navy WWII (Area 2)
Rowden, Rolla Ira – August 6, 1893 – July 3, 1976 – Pvt. U.S. Army WWI (Area 2)
Rowland, Clifford W. – October 21, 1925 – June 26, 1992 – U.S. Air Force (Area 3)
Russell, Authur P. "Artie" – February 21, 1938 – April 15, 1991 – S2 U.S. Navy (Area 2)
Sarringar, Thomas D. – May 29, 1947 – June 6, 1970 – SP/4 U.S. Army Vietnam (Area 2)
Sidle, James C. Sr. – April 24, 1924 – August 6, 1974 – U.S. Navy WWII (grave not found in November 2006)
Skaggs, Warnie – February 9, 1894 – January 3, 1973 – Pvt. U.S. Army WWI (Area 2)
Smith, Grant – 1919 – 1976 – 2Lt U.S. Army WWII (Area 5)
Smith, Jeff O'Donnell – June 30, 1924 – March 5, 2002 – Cpl. U.S. Marines WWII (Area 1)
Smith, Jesse W. – December 30, 1896 – October 13, 1981 – U.S. Army WWI (Area 2)
Smith, John L. – no dates – Co. A 36th Ark. Inf. CSA (Area 2)
Smith, Odus Horace – February 13, 1892 – January 13, 1980 – U.S. Marines WWI (Area 2)
Smith, Robert H. – 1846 – 1923 – Veteran, CSA (Area 1)
Smith, Robert Holt – May 12, 1926 – November 10, 1965 – S2 USNR (Area 2)
Snow, Clyde C. – June 20, 1924 – May 22, 2006 – Tec4 U.S. Army WWII (Area 2)
Snow, Newton C. – August 8, 1896 – February 10, 1965 – Pvt. U.S. Army WWI (Area 2)
Southard, Gentry U. – June 12, 1910 – November 12, 1978 – Pfc. U.S. Army WWII (Area 1)
Stark, Melvin Otto – 1930 – 1982 – M/Sgt. U.S. Air Force Vietnam (Area 2)
Stewart, A.J. – June 26, 1830 – July 28, 1902 – Sgt. Co. A 7th KY Vol. Inf. (Area 1)
Stewart, Fred V. – March 30, 1937 – July 22, 2003 – U.S. Marines (Area 1)
Strayhorn, Alvy – July 7, 1910 – December 15, 1977 – Tec5 U.S. Army WWII (Area 2)
Sullivan, Hershel Lee – June 1, 1929 – April 4, 2000 – U.S. Army (Area 2)
Sullivan, Walter Henry – May 5, 1936 – October 16, 2003 – EM3 U.S. Navy (Area 2)
Tanneberger, Walter – died January 19, 1921 – only date – Pvt. U.S. Army (Area 2)
Tanner, Lendell Eugene – August 17, 1944 – October 26, 1995 – U.S. Navy Vietnam (Area 2)
Turnbow, Floyd R. – January 30, 1911 – July 25, 1984 – Pvt. U.S. Army WWII (Area 2)
Turner, Jessie – November 29, 1909 – April 30, 1976 – SP/5 U.S. Army WWII (Area 4)

Vanderver, Ruval Earl – April 27, 1905 – December 13, 1978 – U.S. Army Veteran (Area 2)
Waggle, William Arnold – 1923 – 1990 – Pfc. U.S. Army WWII (Area 4)
Weaver, Glen Demoir – September 10, 1922 – January 8, 2006 – U.S. Navy WWII (Area 3)
Wilson, Johnny B. – January 7, 1923 – March 19, 1974 – U.S. Navy WWII (Area 2)
Woods, Elvies J. – September 29, 1915 – April 11, 1993 – Pvt. U.S. Army WWII (Area 4)
Wosley, John Stanley – April 28, 1924 – May 9, 1965 – USNR (Area 3)
Wright, Sam – 1891 – 1978 – Pfc. U.S. Army WWI (Area 2)
Yarbrough, Calvin Jerrell – March 14, 1928 – September 28, 1993 – F2 U.S. Navy WWII (Area 4)

Leroy Blair, cemetery research director of the White County Historical Society, thinks the following people might be buried in Gum Springs Cemetery in unmarked graves. Their relatives are buried here but Blair is unable to find these names in any other cemetery in or near White County. If you have information about these people, contact Blair at 557 Baker Road, Searcy, AR 72143 or 501 207-2057.

Atwood, M.A. – husband of Ella Atwood and father of Meaders Henry Atwood
Aunspaugh, Benjamin F. – husband of Rhuhama Aunspaugh and father of Jobe A. Aunspaugh
Aunspaugh, John H. – husband of Elizabeth Foster Aunspaugh
Aunspaugh, Rhunama – wife of Benjamin F. Aunspaugh and mother of Jabe A. Aunspaugh
Aunspaugh, Rebecca – wife of John Charles Aunspaugh
Aunspaugh, Sallie – wife of Henry A. Aunspaugh
Branch, B.H. – husband of Mary E. Branch
Brown, A.V. – father of Warren V. Brown
Bush, Claude – husband of Aletha Bush and father of James Lyndell Bush
Bush, Aletha – wife of Claude Bush and mother of James Lyndell Bush
Cox, L.A. – husband of Sattie Payne
Craven, I.N. – spouse of E.S. Craven and parent of Adler L. Craven
Craven, E.S. – spouse of I.N. Craven and parent of Adler L. Craven
Curry, T.M. – husband of Letha Ada Curry
DuBose, B.L. – spouse of L.C. DuBose and parent of Infant Dubose
DuBose, L.C. – spouse of B.L. DuBose and parent of Infant Dubose
Farrar, S.G. – spouse of V.V. Farrar and parent of Elmo Farrar
Farrar, V.V. – Spouse of S.G. Farrar and parent of Elmo Farrar
Fleming, C.M. – husband of Elizabeth Fleming
Foster, Marvin – husband of Elizabeth Aunspaugh Foster
Freeman, S.C. – husband of Elizie Freeman
Garrison, H.E. – husband of Lois Branch Garrison
Gilliam, John – husband of Mollie E. Gilliam
Hadwick, A.J. – husband of Flossie Hadwick
Hollenberger, L.G. – husband of Emily Gray Owen Hollenberger
Morris, M.M. – spouse of M.J. Morris and parent of J. Henry Morris
Morris, M.J. – spouse of M.M. Morris and parent of J. Henry Morris
Morris, M.L. – spouse of S.A. Morris and parent of Ida S. Morris
Morris, S.A.. – spouse of M.L. Morris and parent of Ida S. Morris
Morris, G.L. – spouse of S.E. Morris and parent of Mary E. & Matterson Monroe Morris
Morris, S.E. – spouse of G.L. Morris and parent of Mary E. Morris & Matterson Monroe Morris

Murray, Elijah – father of Mary Ann Murray
Murray, Elijah – father of Mary Ann Murray
Murray, Mrs. Elijah – wife of Elijah Murray and mother of Mary Ann Murray
Neal, Meredith H. – husband of Harriet Spencer Neal
Neaville, J.C. – spouse of M.A. Neaville and parent of Marie F. Neaville
Neaville, M.A. – spouse of J.C. Neaville and parent of Marie F. Neaville
Rogers, E.W. – spouse of M.J. Rogers and parent of Carrie L. Rogers
Rogers, M.J. – spouse of E.W. Rogers and parent of Carrie L. Rogers
Sherrod, A.T. – husband of Julia Sherrod and mother Ora E. Sherrod
Sherrod, Julia – wife of A.T. Sherrod and mother Ora E. Sherrod
Sterling, C.H. – husband of Ethel Mays Sterling and father of C.H. Sterling Jr.
Sterling, Ethel Mays – wife of C.H. Sterling and father of C.H. Sterling Jr.
Suawell, J.H. – spouse of B.J. Sawell and parent of Fannie E. Suawell
Suawell, B.J. – spouse of J.H. Sawell and parent of Fannie E. Suawell
Thomas, J.T. – husband of Ellen Thomas
Washburn, D.A. – husband of Willie Oliver Washburn
Wylie, J.C. – husband of Barbara A. Wylie and father of Mary E. Wylie

If you have any corrections or additional information on Gum Springs Cemetery, contact the White County Historical Society, P.O. Box 537, Searcy, AR 72145 or Leroy Blair, 557 Baker Road, Searcy AR 72143.

Gum Springs
Cumberland Presbyterian Church
History - 1852-1952

Written and delivered by Hubert Smith, Sr., 1952

It is rather unique and interesting that while we are this date dedicating the new church building of this community we also celebrate the 100th anniversary of the Gum Springs Cumberland Presbyterian Church.

We haven't had a separate congregation at this place for the 100 years but it is true that those of the Cumberland Presbyterian faith of this community did unite with the Searcy Cumberland Presbyterian Church in 1852, that church having been organized in 1850 and therefore considered the parent church. But at the same time, due to slow and inconvenient modes of travel in that day, services were held on Sunday afternoons and certain other special occasions in the old log building which stood on this very spot and was used for all public gatherings and also as a public school building. Therefore, Gum Springs Congregation was for nearly 20 years a Wing Church or Congregation of the Searcy Church.

The Search Church was organized July 16, 1850, by Rev. J.P. Wilson and Rev. Alex Stevenson, regularly ordained ministers of the Cumberland Presbyterian Church, the former of Memphis and the latter of Hopewell Presbytery, Tennessee. The following were charter members of the Search church: R.F. Steele, William Burrow, Job Siddalle, John M. Meek, Phebe A. Steele, Francis E. Burrow, Caroline E. Burrow, Sarah I. Meek, Lucinda Wilks, Livina Siddalle and Pleasant I. Burrow.

The following Preamble was adopted, which I think is quite interesting and contains many well-worded thoughts:

“Whereas the promotion of Religion and Morality is a subject worthy of the consideration and attention of all men, Resolved therefore that we the citizens of Searcy and vicinity, White County, Arkansas, whose names are herewith subscribed and being members of the Cumberland Presbyterian Church, living within the bounds of White River Presbytery, of said church unite ourselves into church capacity, to be known as the Searcy congregation of the aforesaid church. Resolved furthermore that we bind ourselves to live strictly in accordance with the word of God and discipline of the church; to enforce the precepts thereof; to contribute of our substance for the support of the gospel, as God in His providence may prosper us, and also pray for this Presbytery to take us under her maternal care and supply us with the words and ordinances of God’s House.”

By further looking into the records we find more facts pertaining to this particular church, and that the names of many families that some of us remember were added to the church rolls, namely: Clay, Britt, Crisco, Fortner, Wilks, Burrows, Griffin, Holt, Stevenson, Strayhorn, Baldrige, Baldock, Walker and Smith. It was also of special interest to me to find in the records where William and Priscilla Smith and W.B. Walker and Malinda Walker were included in the list and that both couples were members of the same congregation in Tennessee, Mt. Carmel, Fayette County. John W. Holt and W.B. Walker were added to the eldership when their letters were received, the former having been ordained in Tennessee in 1840 and the latter in Tennessee in 1844. When this congregation was made a separate one they also served as elders in the Gum Springs Congregation. We find in the records at a later date the entry of the Booth family who have played such an important role in this church and community. According to the records in 1855, Robert Booth and Minerva Booth, his wife, were received into the church on examination, they being the senior members of the Booth family we have all known so well. A little later many other members of the Booth family cast their lot with this church and community and have continued in an important role in developing the same.

Beginning in the early 1850s, certain lands were purchased for the express purpose of school and church purposes and from time to time certain other lands have been acquired until now it constitutes a total of 7.67 acres. Originally a part of it was designated as school property which is the south part of the tract and adjoining the Gum Spring, and the north part of the tract for church purposes with certain right-of-way privileges so as to have access to the spring. Since the south part of the property is no longer used for school purposes it has been acquired as church property.

It is interesting to find the familiar names of the original Trustees as follows: James Neaville, John H. Humphries, W.B. Walker, John W. Holt and William Smith. You will note that both the Cumberland Presbyterian Church and the Methodist Church are represented on this list of Trustees, since this property was originally procured and has continued to be used as joint property of both denominations.

In 1871 plans were laid to build a Church Building, the original log building having become inadequate and outmoded, and the building with which we were all familiar was erected shortly thereafter as a Union (Cumberland Presbyterian and Methodist) Church and was used continuously as such until it was destroyed on March 21 of this year.

The records from the minutes of the Gum Springs Session Book reflect that the following petition was presented to the Presbytery as follows:

“Whereas part of the members of the Searcy Congregation of the Cumberland Presbyterian Church living in the vicinity of Gum Springs petitioned the Presbytery for the organization of a church at Gum

Springs from the members of the Searcy congregation, and whereas said Presbytery ordered Rev. R.B. Cavette to organize said congregation and to supply them with monthly preaching for one year.”

On Monday September 16, 1872, Rev. D.F. Coffey by request of Bro. Cavette proceeded to organize said membership into a church to be known as Gum Springs Cumberland Presbyterian Church, the following members entered into the organization: W.B. Walker, John W. Holt, Greenwood Booth, W.B. Walker Jr., Mary Holt, Malinda Walker, Joseph A. Walker, James Baldock, Stephen Barnett, Robert Walker, Richard Walker, Elizabeth Barnett, J.W. Trull, James C. Holt, Mary B. Walker, Martha J. Holt, Mavinda Baldock, Lucy C. Holt, Sarah J. Smith, Julia A. Booth, Julia A. Shoffner, Martha J. Archer, Ann Smith, Margaret Fuller, William Smith, Priscilla Smith, A.C. Shoffner, Letha A. Baldock, Annie J. Baldock and Robert Tettleton.

The records are not entirely complete, but with such records as are available reflect that the following pastors have served this congregation since it saw fit to cast its lot with the Search Church and afterwards when it came into its own as follows: Alex Stevenson, Robert Scott Bell, D.P. Coffey, E.W. Edwards, James M. Smith, R.B. Cavette, F.M. Wylie, J.T. Buchanan, Finis M. Wylie, G.H. Weaver, W.T. Sullivan, F.Z. Nesbitt, J.S. Hall, J.M. Russell, J.E. Edwards, W.W. Rudolph, J.L. Price, G.F. Carter, Russell Tatum, W.R. Reid, Mrs. Maybelle Reid, W.C. McConnell, and for the past few years the pulpit has been filled by Miss Esther Marsh, licentiate who has wholeheartedly supported and worked untiringly for the replacement of the church building which we now occupy and which affords us so much pleasure to come to the hour of dedication which section of the service will follow this immediately and as we come to this hour of dedication may we all resolve to re-dedicate our lives for the continue upbuilding of this community that we all love and appreciate, and that a reflection of our lives will not only shine in this community but in the Kingdom of God, is my prayer.

(From the archives of the White County Historical Society, P.O. Box 537, Searcy, AR 72145)

White County's Little-Known Medal of Honor Winner

By GARY TELFORD

Few residents of White County know that a Congressional Medal of Honor winner from Ohio rests in Gum Springs Cemetery, south of Searcy. Even fewer know how he wound up here.

This brief obituary in the *Arkansas Gazette* marked his passing.

J. B. Hartzog

Beebe--Joshua Byron Hartzog, 73, died at his home Friday night, May 27, 1939. He was a veteran of the Indian Wars and received the Congressional Medal of Honor for gallant action under fire at the Battle of Wounded Knee Creek, South Dakota. He was a member of the World's Fair Exposition police force of Chicago in 1893.

He is survived by his wife, four sons, Fred and James of McClelland, Laurence of Keo, and Walter Hartzog of San Antonio, Texas; seven daughters, Mrs. O.L. Baker of Beebe, Mrs. E.S. Carrico and Mrs. Florence Lathrone of Huntington, W. Virginia, Miss Anne Hartzog of McClelland, Mrs. Jesse Dodson of West Point, Mrs. Leslie Gray of Deering, Missouri and Mrs. Ben Stiles of Little Rock, and a sister, Mrs. Will Plummer of Grover Hill. Funeral services were held at the Westbrook Funeral Home at 10:a.m. Sunday.

Joshua Byron Hartzog was born February 3, 1866 in Washington Township, Paulding Co., Ohio, the son of Joshua and Sarah Jane (Blythe) Hartzog. His father Joshua was born January 19, 1830 in Schuylkill Co., Pennsylvania, and married Sarah Jane Blythe, 21, of Latty in Paulding County on May 15, 1865. Joshua and Sarah Jane, who are buried in Middle Creek Cemetery, Grover Hill, Ohio, lived long enough to see young Joshua distinguish himself in the famous Battle of Wounded Knee, but died before he sank roots in Arkansas.

Joshua Byron Hartzog was a Private serving in Company E, 1st U.S. Artillery. His commanding officer had fallen severely wounded, on the battle field and Joshua picked him up, and carried him out of range of the Indian guns. The following is from official records in the National Archives.

On the morning of December 29, 1890, the Sioux chief Big Foot and some 350 of his followers camped on the banks of Wounded Knee creek, a tributary of the White River. Surrounding their camp was a force of U.S. troops charged with the responsibility of arresting Big Foot and disarming his warriors. In a frantic attempt to return to their glory days, many Sioux sought deliverance in a new mysticism preached by a Paiute shaman called Wovoka, and fought fiercely believing that their "Ghost Shirts" would protect them from the bluecoats' bullets. In the savage battle twenty-four soldiers distinguished themselves to the degree that they were awarded the Medal of Honor. When his commanding officer was wounded, Private Joshua Hartzog braved the heavy fire of the enemy to rush to his side, pick him up, and then carried the wounded officer out of range of the hostile guns.

This is an actual eye-witness account:

"All of the Indians opened fire on us. One of my men went for ammunition and didn't come back-- My captain called to me to come back, but I kept moving nearer the Indians, and kept shooting. Lieutenant Hawthorne came toward me and was calling, when suddenly I heard him say: 'Oh my God!' Looking around, I saw him lying on his side, and then I knew he had been hit. Hartzog ran to him and carried him back behind the hill."

For this heroic act, Hartzog was presented the Medal of Honor on March 24, 1891.

After serving as a member of the World's Fair Exposition police force at Chicago, Joshua Byron Hartzog returned to Ohio and was married, July 25, 1894 at Grover Hill, Ohio, to Elvina Elizabeth Gensel, the daughter of James H. Gensel, and Mary S. (Akerman) Gensel. James was born January 2, 1837, in Carbon County, Pennsylvania, and Mary was born May 4, 1849, in Lafayette, Ohio. They were married July 25, 1869. James died August 14, 1920 in Flint, Michigan and Mary died September 10, 1934 at Swartz Creek, Michigan.

Joshua and Elvina Elizabeth soon moved to Alabama but the year is not known. They were living at Florence when their daughter, Lettie Nevada Hartzog was born on December 4, 1898. Elvina Elizabeth, who was born November 20, 1874 at Grover Hill, died September 24, 1916, at Higginson in White County, Arkansas. How and why this Medal of Honor winner came to this small railroad town is not known.

Apparently, he continued to live here, and two years after the death of his first wife, he married Gertrude Thurman of White County on June 01, 1918. She was 48 years old and he was 52. The marriage apparently did not last, and five years later Hartzog married his third wife, Madie Belle McClellan of White County, on January 18, 1923.

Joshua and Gertrude had one child, a daughter. Gertrude died at 67 in 1937 and was buried in Old Dogwood Cemetery at Griffithville. A Civil War veteran, D. T. Thurmond, is also buried in this cemetery. After researching these families, I think he may have been Gertrude's father. D. T. was born August 8, 1835, and served in Company F, 14th Tennessee Cavalry, CSA. He died February 4, 1905, and

was married to Nancy E. Thurman, who was born July 22, 1837, and died December 14, 1899. She is also buried in the Old Dogwood Cemetery, and I believe she is Gertrude's mother.

Joshua Byron Hartzog's third wife, Madie Belle, was born December 10, 1884, in White County. She died April 27, 1977--38 years after his death--and was buried in Gum Springs Cemetery.

It is remarkable that a Congressional Medal of Honor winner made his final home in White County, and so little is known about him.

The writer is a member of the White County Historical Society who may be contacted at Family Roots Genealogy Research, P. O. Box 282, Bald Knob, AR 72010 wgt@centurytel.net